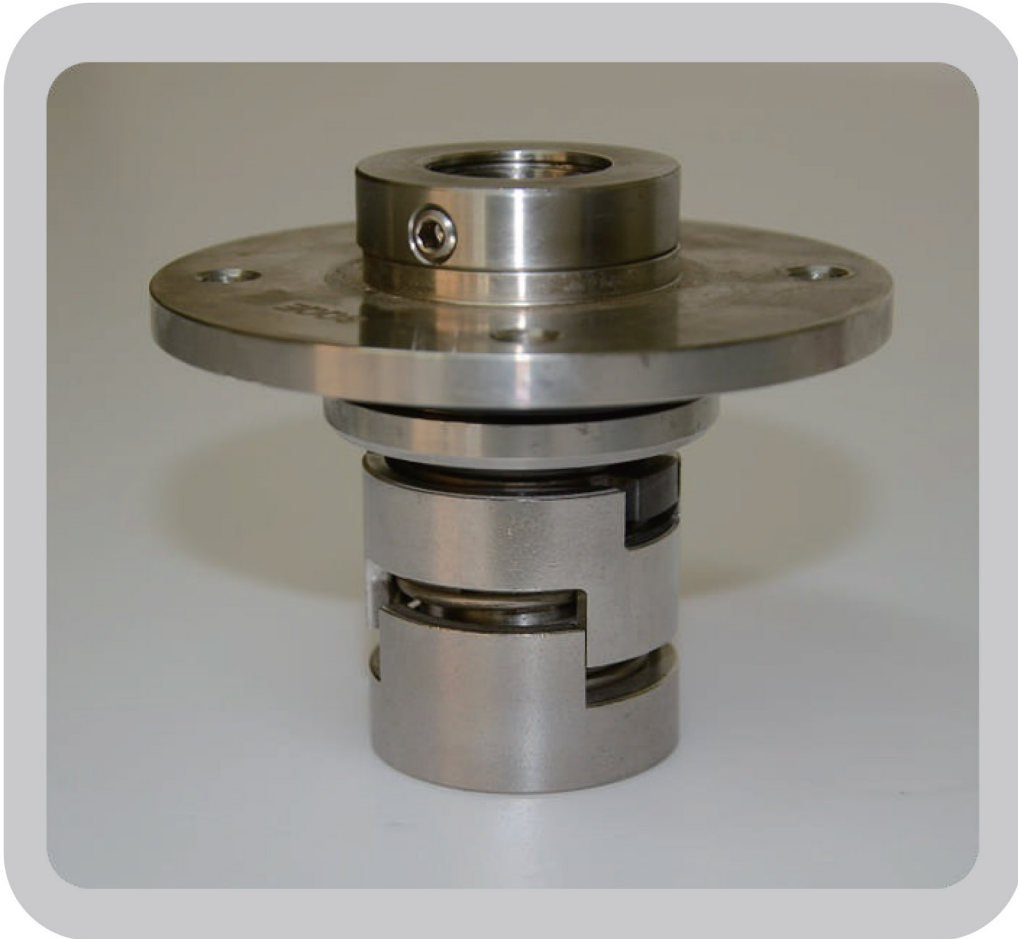




**GOL PUMPS
TECHNOLOGY INC**



**SB-32,45,64,90
Shaft seal-Service Manual**

3750 NW114 AVE #6 MIAMI , FL 33178

Ph: +1 (786) 615 8984 Fax: +1 (786) 615 7043

www.golpumps.com

Info@golpumps.com

Removing



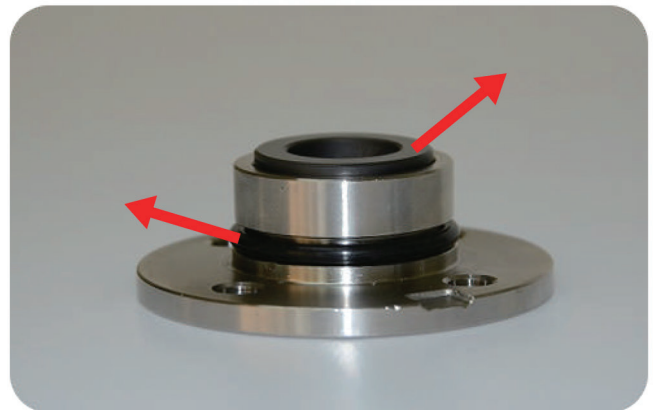
Step1: use 3mm hexagon wrench turn on the bolt



Step2: grasp the set base of shaft seal, avoid the component bounce
Just loose the bolt, it's unnecessary to take hexagon socket head out



Step3: take out the set base of shaft seal



Step4: take the fixed ring,O-ring (P44) out



Step5: take the O-ring (P32) which on the fixed-ring out



Step6: take rotation of the ring,sheath out



Step7: take O-ring (P26) out which inside the sheath



Step8: take compress spring out



Step9: take out the O- ring (P22A) of spindle
*suggest using the tool to assist



Disassembly Complete



- 1: spindle sleeve
- 2: rotation of the ring
- 3: fixed ring
- 4: set base of shaft seal
- 5: compress spring
- 6: sheath
- 7: O- ring (P22A)
- 8: O- ring (P26)
- 9: O- ring (P32)
- 10: O- ring (P44)
- 11: hexagon socket head

Assembling



Assemble SB-32,45,64,90 shaft seal
Must be prepared 3mm hexagon wrench



Step1: put O-ring (P22A) into the groove of shaft



Step2: put the compress spring into the shaft



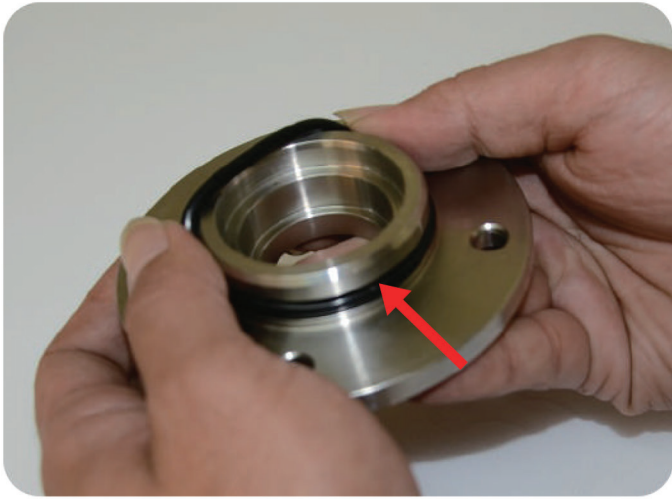
Step3: put the sheath into the O-ring (P26)



Step4: put the sheath into the shaft



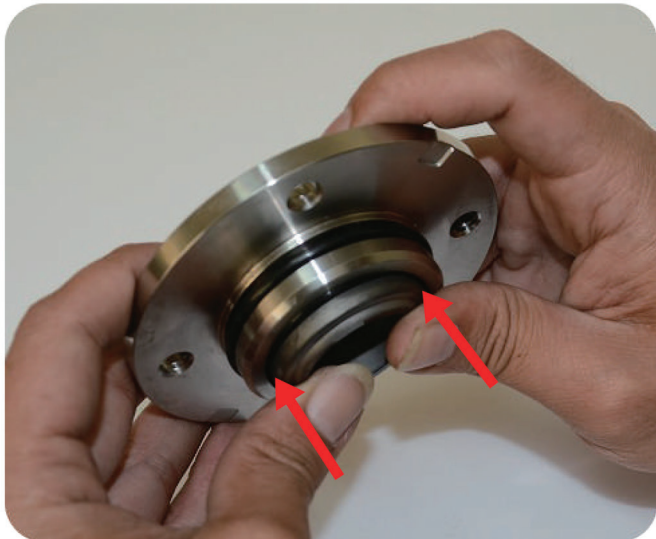
Step5: put the rotation of the ring into the sheath,
bright face up



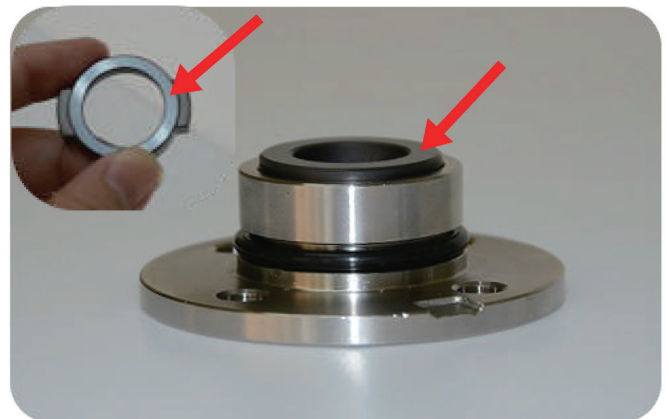
Step6: put O-ring (P44) into the set base of shaft seal



Step7: put O-ring (P32) into the fixed ring



Step8: tuck the fixed ring in the set base of shaft seal



Put the fixed ring smoothly, cannot have difference of height, bright face up



Step9: put the set base of shaft seal on the shaft



Press the set base of shaft seal and grasp it, avoid the bolt was bounced



Step10: grasp the set base of shaft seal,
put hexagon socket head on it



Step11: use 3mm hexagon wrench lock the bolt,
but it cannot exceed the shaft,
just not protrude the hexagon socket head



Assembly complete