



**GOL PUMPS TECHNOLOGY INC**

# DC SOLAR PUMP

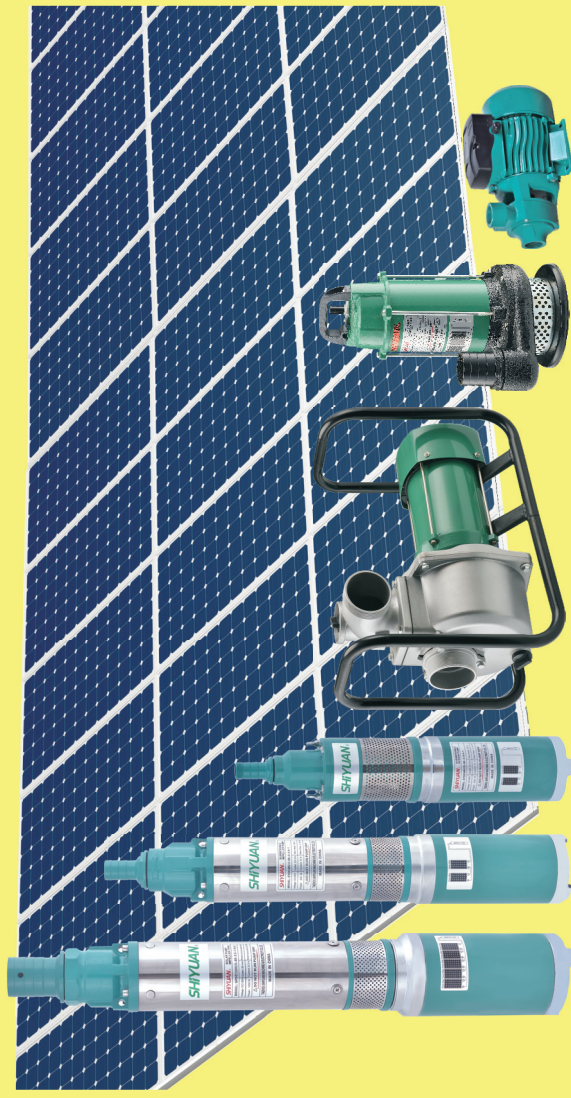
2019 CONTENTS

Professional DC Solar Pump Manufacturer



**GOL PUMPS TECHNOLOGY INC**

MIAMI, FL 33178  
Ph: +1 (786) 615 8984  
Fax: +1 (786) 615 7043  
Info@golpumps.com  
www.golpumps.com





# DC SOLAR PUMP

DIRECT DC  
SOLAR WATER PUMP  
CONTROLLER NOT REQUIRED



Solar pumping systems work anywhere the sun shines. Pumping water is a sensible and effective use of solar electric power. During the hot months, when water requirements are highest, a solar pump will provide a reliable water source for a farm.

A solar pumping system is available for almost all applications where an electric pump can be used. Because solar energy varies from one location to another, and over the course of a day, system design is important. Adequate water storage ensures that water is available whenever needed, and balances daily variations in water supply and demand. Thus a small pump only running when the sun shines, plus water storage, can often provide all that is required for water supply."

## 1. Irrigation

A solar water pump is a ideal tool for farmers. They can move or transfer water from nearby sources such as lake or rivers to irrigate the crops using solar water pump.

Farmers and avid gardeners will be able to save on their irrigation budget for using solar water pump, instead of fuel-powered pumps."

## 2. Livestock

Ranch owners can also benefit a lot from using solar water pump. They can provide water for their animals in a cost-effective and easy way. The solar water pump can generate water from deep wells, streams, ponds, and even pipelines."

## 3. Garden Fountains

Aside from functional purposes, a solar water pump can also be used as a cost-effective way to generate water for your garden fountains. Many household owners use their water pumps as fountains which give the house a different yet refreshing ambience. You will be able to save a huge amount of energy especially if you want your water fountains work for several hours a day. In fact, you can turn it on continuously and not worry about paying huge power bills."

## 4. Home Supply

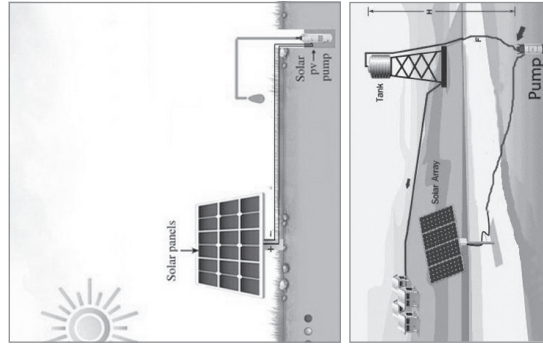
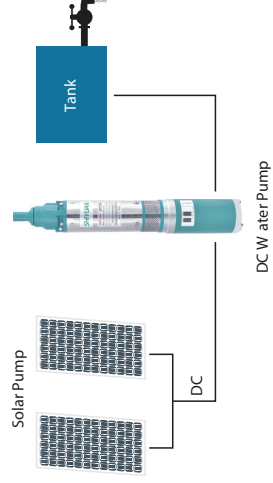
Many environmentalists agree that using solar water pump at home is one of the best ways to go "green." For domestic water use, a booster pump should be used especially if the water source is shallow."

## 5. Large Scale Watering System for Commercial Establishments

Solar water pump is now also being used in huge cities. Various large establishments such as hotels, apartments, condominiums and even government buildings implement solar water pumps in order to save on their power expenses."

## 6. Water Treatment Systems

In areas where the quality of water is very poor, government and private companies use water purification process which requires water pumping. Solar water pumps can be used as a cost-effective substitute for fuel-powered pumping machines."



If the pump also need to work during the night time, or even in cloudy and rainy day, you need battery.  
NOTE: THE POSITIVE AND NEGATIVE ELECTRODES, PROHIBIT CONNECTED TO THE WRONG



# DC SOLAR PUMP

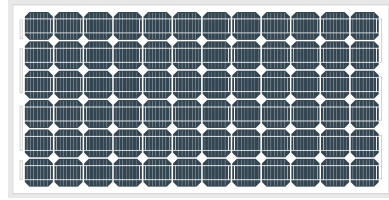
## The 2nd Generation

High Energy Efficiency

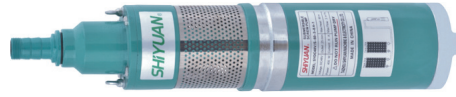
Long Lifetime

Series Connection

**NEW**

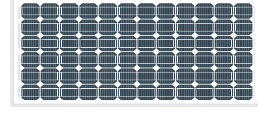


250 W

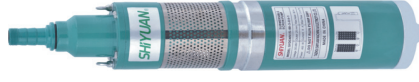


THE 2nd GENERATION  
DIRECT DC  
SUBMERSIBLE SOLAR WATER PUMP  
CONTROLLER NOT REQUIRED

**NEW**



250 W



300W/400W



300W/400W/600W



1000W

### PUMP PERFORMANCE

Pump type	Item no	Voltage	Current	Power	Outlet	Max Flow	Max Head	Cable	Connection Mode
SCREW PUMP	SYDC30V/5-30-3-0.3-1	30V	8.3A	250W	25MM	3M <sup>3</sup> /H	30M	20	Series Connection
	SYDC36V/5-40-3-0.3-1	36V	7A	300W	25MM	3M <sup>3</sup> /H	40M	20	
	SYDC48V/5-60-3-0.4-1	48V	8A	400W	25MM	3M <sup>3</sup> /H	60M	20	
	SYDC48V/5-60-3-0.4-1	48V	8A	400W	25MM	3M <sup>3</sup> /H	60M	20	
	SYDC72V/5-70-3-0.6-1	72V	8.3A	600W	25MM	3M <sup>3</sup> /H	70M	20	
IMPELLER PUMP	SYDC30V/1-20-3-0.25-1	30V	8.3A	250W	25MM	3M <sup>3</sup> /H	20M	20	Series Connection
	SYDC36V/1-30-3-0.3-1	36V	8.3A	300W	25MM	3M <sup>3</sup> /H	30M	20	
	SYDC48V/1-50-3-0.4-1	48V	8A	400W	25MM	3M <sup>3</sup> /H	50M	20	
	SYDC72V/1-60-3-0.6-1	72V	8.3A	600W	25MM	3M <sup>3</sup> /H	60M	20	
	SYDC96V/1-70-3-0.7-1	96V	7.3A	700W	25MM	3M <sup>3</sup> /H	70M	20	

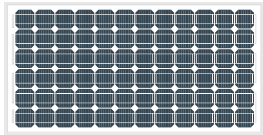
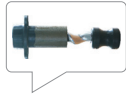
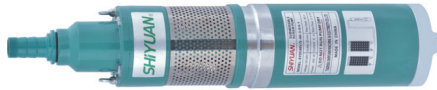




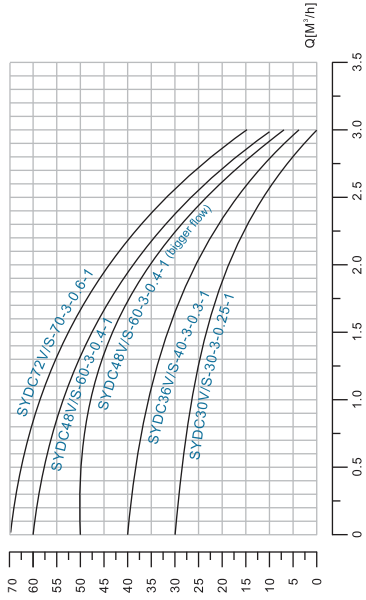
# THE 2nd GENERATION

## SCREW PUMP

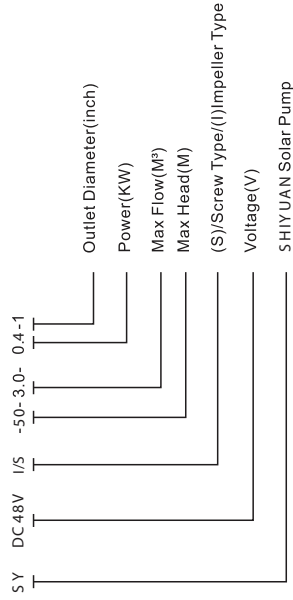
**NEW**



250W



### MODEL INSTRUCTION



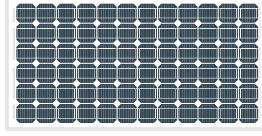
### PUMP PERFORMANCE

Pump type	Item no	Voltage	Current	Power	Outlet	Max Flow	Max Head	Cable	Connection Mode
SCREW PUMP	SYDC30V/S-30-3-0-3-1	30V	8.3A	250W	25MM	3M³/H	30M	20	Series Connection
	SYDC36V/S-40-3-0-3-1	36V	7A	300W	25MM	3M³/H	40M	20	
	SYDC48V/S-60-3-0-4-1	48V	8A	400W	25MM	3M³/H	60M	20	
	SYDC48V/S-60-3-0-4-1	48V	8A	400W	25MM	3M³/H	60M	20	
	SYDC72V/S-70-3-0-6-1	72V	8.3A	600W	25MM	3M³/H	70M	20	

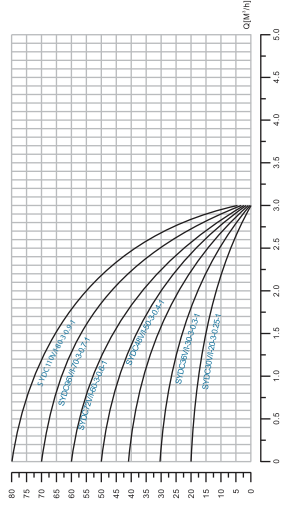
# THE 2nd GENERATION

## IMPELLER PUMP

**NEW**



250W



### DIRECT DC

SUBMERSIBLE SOLAR WATER PUMP  
CONTROLLER NOT REQUIRED

### PUMP FEATURES

- 100% COPPER WIRE
- HIGH ENERGY EFFICIENCY
- LONG LIFETIME
- SERIES CONNECTION

### PUMP PERFORMANCE

Pump type	Item no	Voltage	Current	Power	Outlet	Max Flow	Max Head	Cable	Connection Mode
IMPELLER PUMP	SYDC30V/S-20-3-0-25-1	30V	8.3A	250W	25MM	3M³/H	20M	20	Series Connection
	SYDC36V/S-30-3-0-3-1	36V	8.3A	300W	25MM	3M³/H	30M	20	
	SYDC48V/S-50-3-0-4-1	48V	8A	400W	25MM	3M³/H	50M	20	
	SYDC48V/S-50-3-0-4-1	48V	8A	400W	25MM	3M³/H	50M	20	
	SYDC72V/S-60-3-0-6-1	72V	8.3A	600W	25MM	3M³/H	60M	20	
	SYDC90V/S-70-3-0-7-1	90V	7.3A	700W	25MM	3M³/H	70M	20	
SYDC110V/S-80-3-0-9-1	110V	8A	900W	25MM	3M³/H	80M	20		





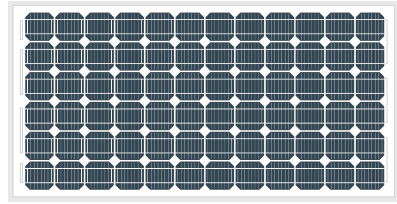


# DC SOLAR PUMP

## The 2nd Generation

High Energy Efficiency  
Long Lifetime  
Series Connection

**NEW**



250W

# THE 2nd GENERATION

## DIRECT DC

### SUBMERSIBLE SOLAR WATER PUMP

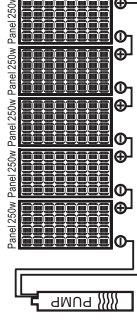
### CONTROLLER NOT REQUIRED

— PUMP APPLICATION

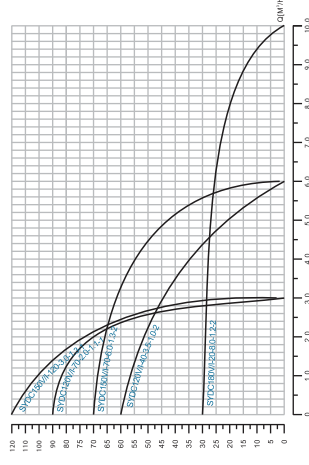
**NEW**

IRRIGATION  
LIVE STOCK  
GARDEN FOUNTAINS  
HOME SUPPLY  
LARGE SCALE WATERING SYSTEM FOR COMMERCIAL ESTABLISHMENTS SOLAR WATER TREATMENT SYSTEMS

DC SOLAR WATER PUMP USED WITHOUT CONTROLLER, IT CAN WORK WITH BATTERY DIRECTLY AS WELL.



PUMP 120V 1 100W



1000W/1 100W/1200W

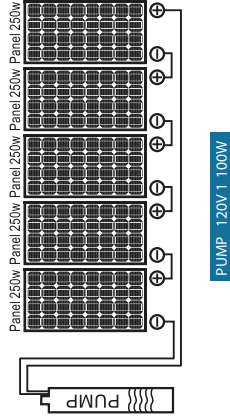
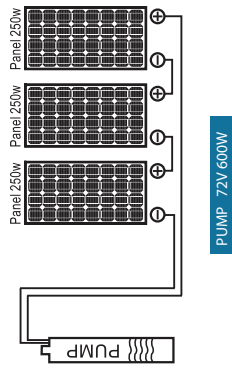
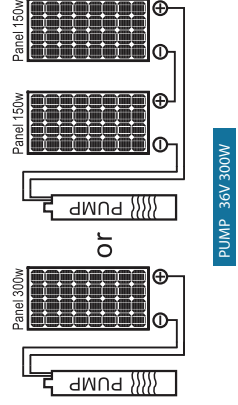
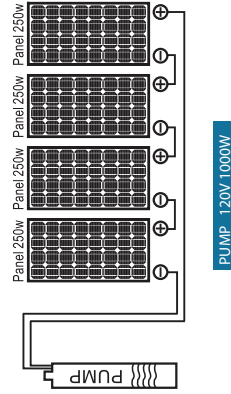
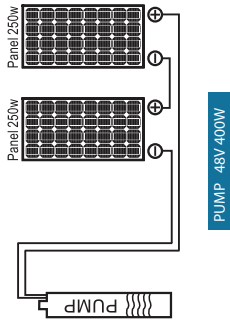
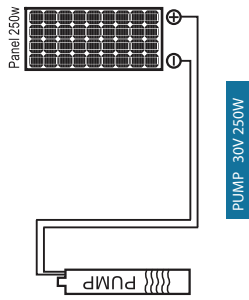
#### PUMP PERFORMANCE

PumpType	Item no	Voltage	Current	Power	Outlet	Performance Head	Performance Flow	MAX Head	MAX Flow	Cable	Connection Mode
IMPELLER PUMP	SYDC120V/40-3.0-1.1-1	120V	8.3A	1100W	25MM	70M	2M <sup>3</sup> /H	90M	3M <sup>3</sup> /H	20	Series Connection
	SYDC150V/120-3.0-1.3-1	150V	8A	1300W	25MM	100M	1M <sup>3</sup> /H	120M	3M <sup>3</sup> /H	20	
PUMP	SYDC120V/40-3.5-1.0-2	120V	8.3A	1000W	50MM	40M	3.5M <sup>3</sup> /H	60M	6M <sup>3</sup> /H	20	Series Connection
	SYDC180V/420-8.0-1.2-2	180V	6.7A	1200W	50MM	20M	8M <sup>3</sup> /H	30M	10M <sup>3</sup> /H	20	
	SYDC150V/470-6.0-1.3-2	150V	8A	1300W	50MM	50M	4.5M <sup>3</sup> /H	70M	6M <sup>3</sup> /H	20	



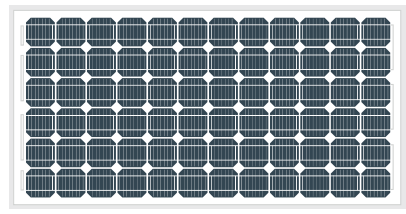


## SOLAR PANEL CONNECTION FOR THE 2ND GENERATION SOLAR PUMPS SERIES CONNECTION



# DC SOLAR PUMP THE 3G DC SOLAR PUMP

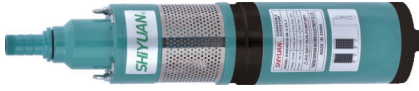
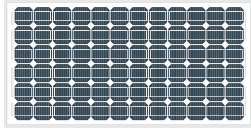
High Energy Efficiency  
Long Lifetime  
Series Connection



250W

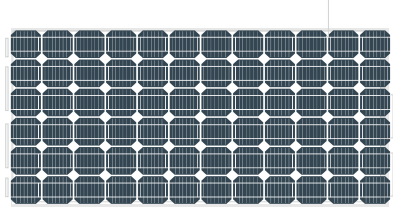


## DIRECT DC THE 3G DC SOLAR PUMP CONTROLLER NOT REQUIRED



## IMPELLER PUMP THE 3G DC SOLAR PUMP

High Energy Efficiency  
Long Lifetime  
Series Connection



### PUMP PERFORMANCE

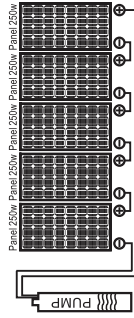
Pump type	Item no	Voltage	Current	Power	Outlet	Max Flow	Max Delivery Head	Cable
SCREW PUMP	3S YDC30V/5-250W-1	30V	6.5A	250W	25MM	3.5m <sup>3</sup> /h	50M	20
	3 S YDC36V/5-300W-1	36V	6.5A	300W	25MM	3.5m <sup>3</sup> /h	60M	20
	3 S YDC48V/5-400W-1	48V	6.5A	400W	25MM	3.5m <sup>3</sup> /h	70M	20
IMPELLER PUMP	3 S YDC72V/5-600W-1	72V	6.5A	600W	25MM	3.5m <sup>3</sup> /h	80M	20
	2S YDC36V/300W-1	30V	6.5A	250W	25MM	3.5m <sup>3</sup> /h	35M	20
	3S YDC36V/300W-1	36V	6.5A	300W	25MM	3.5m <sup>3</sup> /h	40M	20
	3 S YDC48V/400W-1	48V	6.5A	400W	25MM	3.5m <sup>3</sup> /h	60M	20
	3 S YDC72V/600W-1	72V	6.5A	600W	25MM	3.5m <sup>3</sup> /h	70M	20
	3 S YDC96V/700W-1	96V	6.5A	700W	25MM	3.5m <sup>3</sup> /h	80M	20
	3 S YDC110V/900W-1	110V	6.5A	900W	25MM	3.5m <sup>3</sup> /h	90M	20



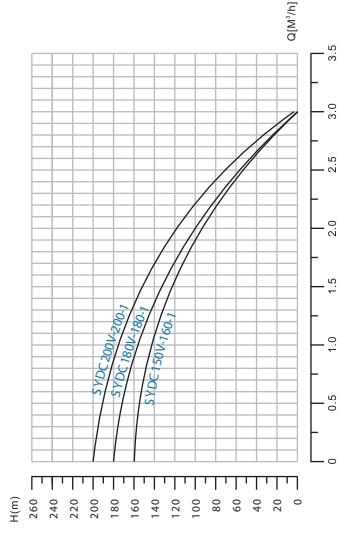
# IMPELLER PUMP THE 3G DC SOLAR PUMP

IRRIGATION  
LIVE STOCK  
GARDEN FOUNTAINS  
HOME SUPPLY  
LARGE SCALE WATERING SYSTEM FOR COMMERCIAL ESTABLISHMENTS SOLAR  
WATER TREATMENT SYSTEMS

DC SOLAR PUMP USED WITHOUT CONTROLER,  
IT CAN WORK WITH BATTERY AS WELL.

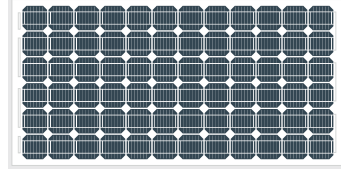
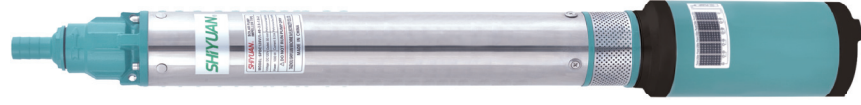


PUMP 120V/1 100W



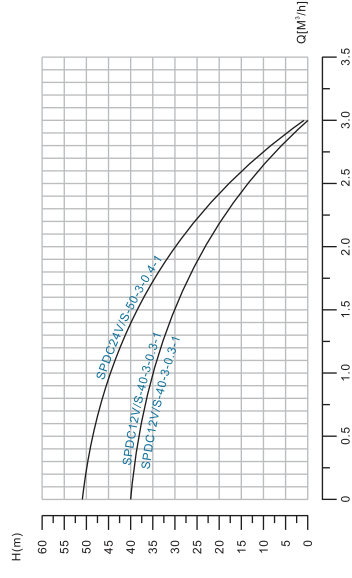
PUMP PERFORMANCE

Pump type	Item no	Voltage	Current	Power	Outlet	Max Flow	Max Head	Working Flow	Working Head	Cable
IMPELLER PUMP	SYDC150V-160-1	150VDC-180VDC	7A	1500W	25MM	3m <sup>3</sup> /h	160M	1m <sup>3</sup> /h	130	20
	SYDC180V-180-1	180VDC-210VDC	7A	1800W	25MM	3m <sup>3</sup> /h	180M	1m <sup>3</sup> /h	150	20
	SYDC200V-200-1	200VDC-240VDC	7A	2200W	25MM	3m <sup>3</sup> /h	200M	1m <sup>3</sup> /h	170	20

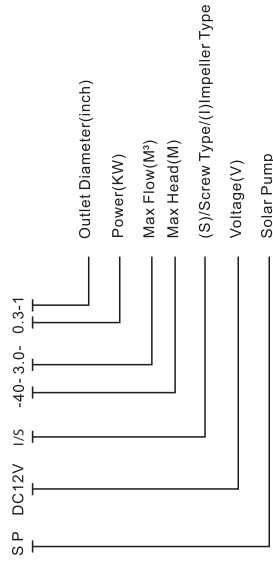


250W

# SCREW PUMP Recommended connect to battery or Solar Panels by Parallel connection



MODEL INSTRUCTION



250W

PUMP PERFORMANCE

Pump type	Item no	Voltage	Current	Power	Outlet	Max Flow	Max Head	Cable
SCREW PUMP	SPDC12V/S-40-3-0-3-1	12V	25A	300W	25MM	3m <sup>3</sup> /h	40M	20
	SPDC24V/S-40-3-0-3-1	24V	13A	300W	25MM	3m <sup>3</sup> /h	40M	20
	SPDC24V/S-50-3-0-4-1	24V	17A	400W	25MM	3m <sup>3</sup> /h	50M	20

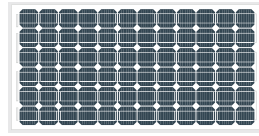
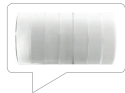
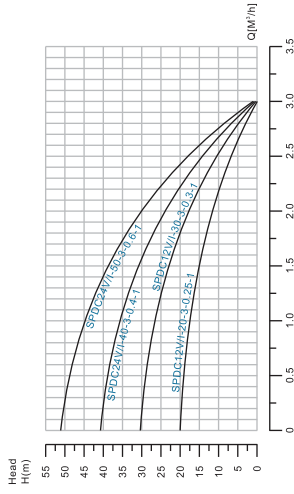




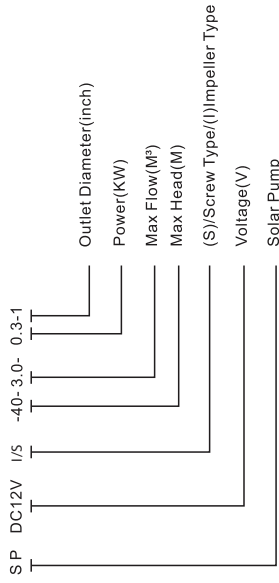


## IMPELLER PUMP

Recommended connect to battery or Solar Panels by Parallel connection



### MODEL INSTRUCTION



### PUMP PERFORMANCE

Pump type	Item no	Voltage	Current	Power	Outlet	Max Flow	Max Head	Cable
IMPELLER PUMP	S P DC 12V/12-0-3-0-251-1	12V	20A	250W	25MM	3m³/h	20M	20
	S P DC 12V/12-0-3-0-3-1	12V	25A	300W	25MM	3m³/h	30M	20
	S P DC 24V/24-0-3-0-4-1	24V	17A	400W	25MM	3m³/h	40M	20
	S P DC 24V/24-0-3-0-6-1	24V	25A	600W	25MM	3m³/h	50M	20

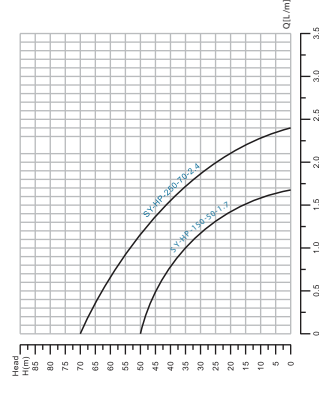
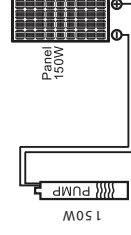
## HIGH PRESSURE PUMP SOLAR SUBMERSIBLE PUMP DIRECT DC CONTROLLER NOT REQUIRED

### Instructions

Solar Submersible Pump is Your Best Choice For Long-distance Water Requirement Together With Durable Performance. It Can Be In The Maximum Depth Of 50meters Place Use 24v Dc Provide A Stable 2.4 Liters/minute Flow, Generally Used In Long Distance Pumping Operations.



SY-HP1.7-50-150



### PUMP PERFORMANCE

Pump type	Item no	Voltage	Current	Power	Outlet	Performance Flow	Performance Head	Cable	Connection Mode
PRESSURE PUMP	SY-HP-150-50-1.7	12V-18V	8.3A	150W	12.5MM	1.7L/m	40M	10	1x150W
	SY-HP-250-70-2.4	24V-30V	8.3A	250W	12.5MM	2.4L/m	50M	10	1x250W





## DIRECT DC QB SOLAR WATER PUMP CONTROLLER NOT REQUIRED

- PUMP FEATURES
- 100% COPPER WIRE
- BRASS IMPELLER
- S/S SCREW

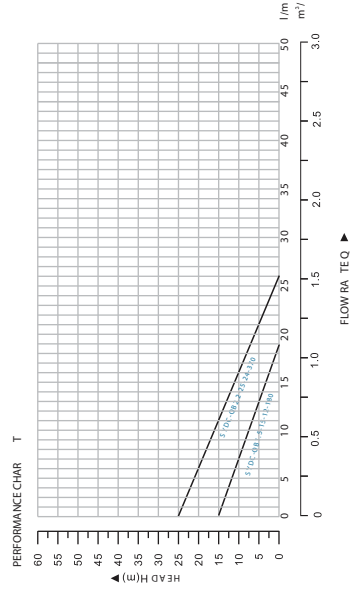
DC SOLAR WATER PUMP USED WITHOUT CONTROLLER,  
IT CAN WORK WITH BATTERY DIRECTLY AS WELL.



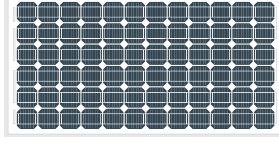
SYDC-QB180-12-15-1.5



SYDC-QB370-24-25-2.2



# DCS OLAR PUMP



250W

NEW



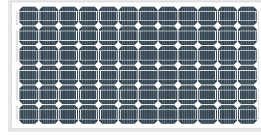
### PUMP PERFORMANCE

Model	Output Power		Inlet/Outlet (In)	MaxSuct (m)	MaxFlow (m³/h)	Q (l/min)		H (m)		FLOW RATE					
	kw	hp				0	5	16	20	30	35	40	45		
SYDC-QB1515180	0.18	0.25	1"x1"	8	1.5	0	5	16	13	11	9	5			
SYDC-QB223254370	0.37	0.50	1"x1"	8	2.2	0	10	20	17	15	10	5	2		
SYQB-70	0.55	0.80	1"x1"	8	2.2	0	20	50	42	30	25	20	2		



# DIRECT DC SUBMERSIBLE SOLAR WATER PUMP CONTROLLER NOT REQUIRED 3 INCH BODY

**NEW**

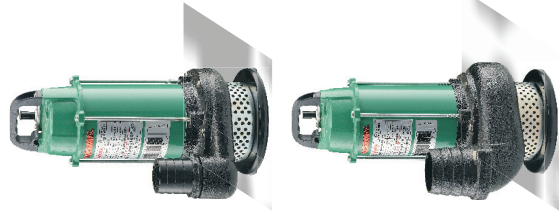


250W

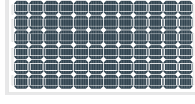


250W

250W

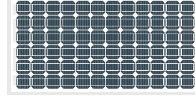


MODEL		SYODX 1.1-18-80	
OUTPUT POWER	kw	1.1kw	
	hp	1.5hp	
VOLTAGE (V)		110V	
CURRENT (A)		8A	
PERFORMANCE FLOW (m <sup>3</sup> /h)		8m <sup>3</sup> /h	
PERFORMANCE HEAD (m)		18m	
OUTLET (in)		2in	

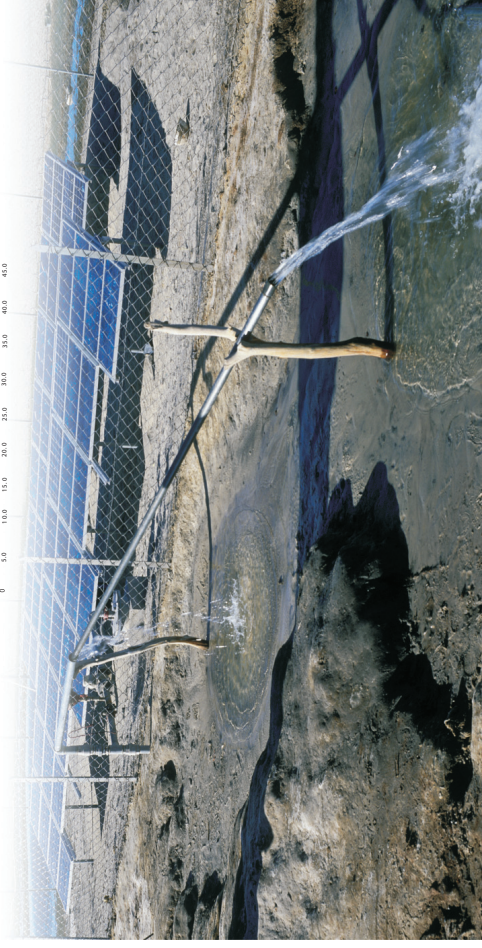
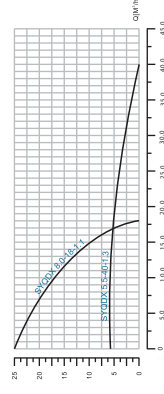


250W

MODEL		SYODX 1.3-40-55	
OUTPUT POWER	kw	1.3kw	
	hp	1.6hp	
VOLTAGE (V)		150V	
CURRENT (A)		8A	
PERFORMANCE FLOW (m <sup>3</sup> /h)		40m <sup>3</sup> /h	
PERFORMANCE HEAD (m)		5.5m	
OUTLET (in)		3in	



250W



## PUMP PERFORMANCE

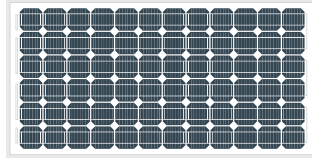
Pump type	Item no	Voltage	Current	Power	Outlet	Max Flow	Max Head	Cable
SCREW PUMP	3SYDC12V/S-40	12V	16A	250W	25MM	1.5M <sup>3</sup> /H	40	CABLE 20M
	3SYDC24V/S-40	24V	8A	250W	25MM	1.5M <sup>3</sup> /H	40	
IMPELLER PUMP	3SYDC12V/I-20	12V	16A	250W	25MM	1.5M <sup>3</sup> /H	20	CABLE 20M
	3SYDC24V/I-20	24V	8A	250W	25MM	1.5M <sup>3</sup> /H	20	





# DC SOLAR ENGINE PUMP

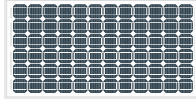
NEW



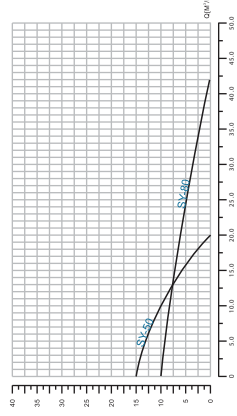
250W



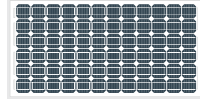
MODEL	SY 50-
POWER	2HP
VOLT	DC 150V
CURRENT	9.5A
DIA	50MM(2inch)
MAX HEAD	15M
MAX FLOW	20m <sup>3</sup> /h
HEAD FLOW	10M
SUCTION	7M



250W



MODEL	SY 80-
POWER	2HP
VOLT	DC 150V
CURRENT	9.5A
DIA	80MM
MAX HEAD	10M
MAX FLOW	42m <sup>3</sup> /h
HEAD FLOW	5M
SUCTION	7M



250W

