



Technical Data

Vertical In-line Pump - EGM50-3220-01104

Revision no.

Page:

1

Receiver

From

 Company name
 Respons. Department
 Person in charge
 Phone number
 Fax no
 E-mail address

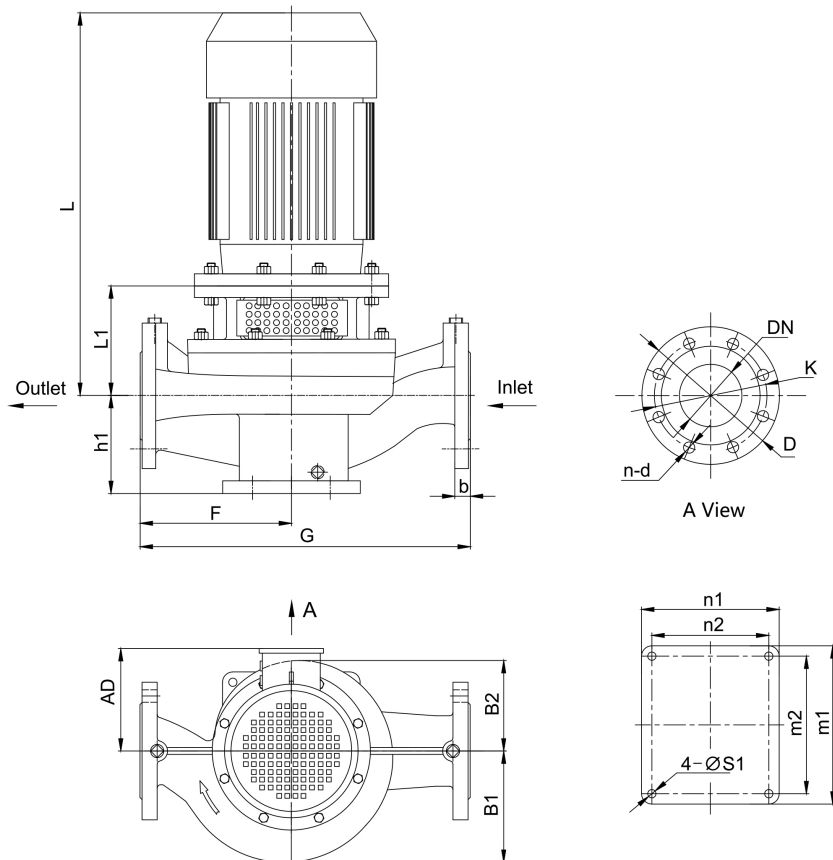


Brand: Gol Pumps
Model: EGM50-3220-01104

Motor (V1)	
Model	HP
Y2-90S-4	1.5

Weight (lb)		
Pump	Motor	Pump & Motor
101.2	48.4	149.6

Dimensions:



Pump Installation Size (inch)

h1	L1	F	G	L	AD	B1	B2	n2 x m2	n1 x m1	S1	DN	D	K	n - d	b
4.6	5.9	8.3	16.5	15.6	6.1	5.4	5.3	6.7x7.9	7.9x9.1	0.6	2	5.9	4.8	4 - ϕ 0.8	-

Project

Project ID

Created by

Created on

Last update



Performance Curves

Vertical In-line Pump - EGM50-3220-01104

Revision no.

Page:

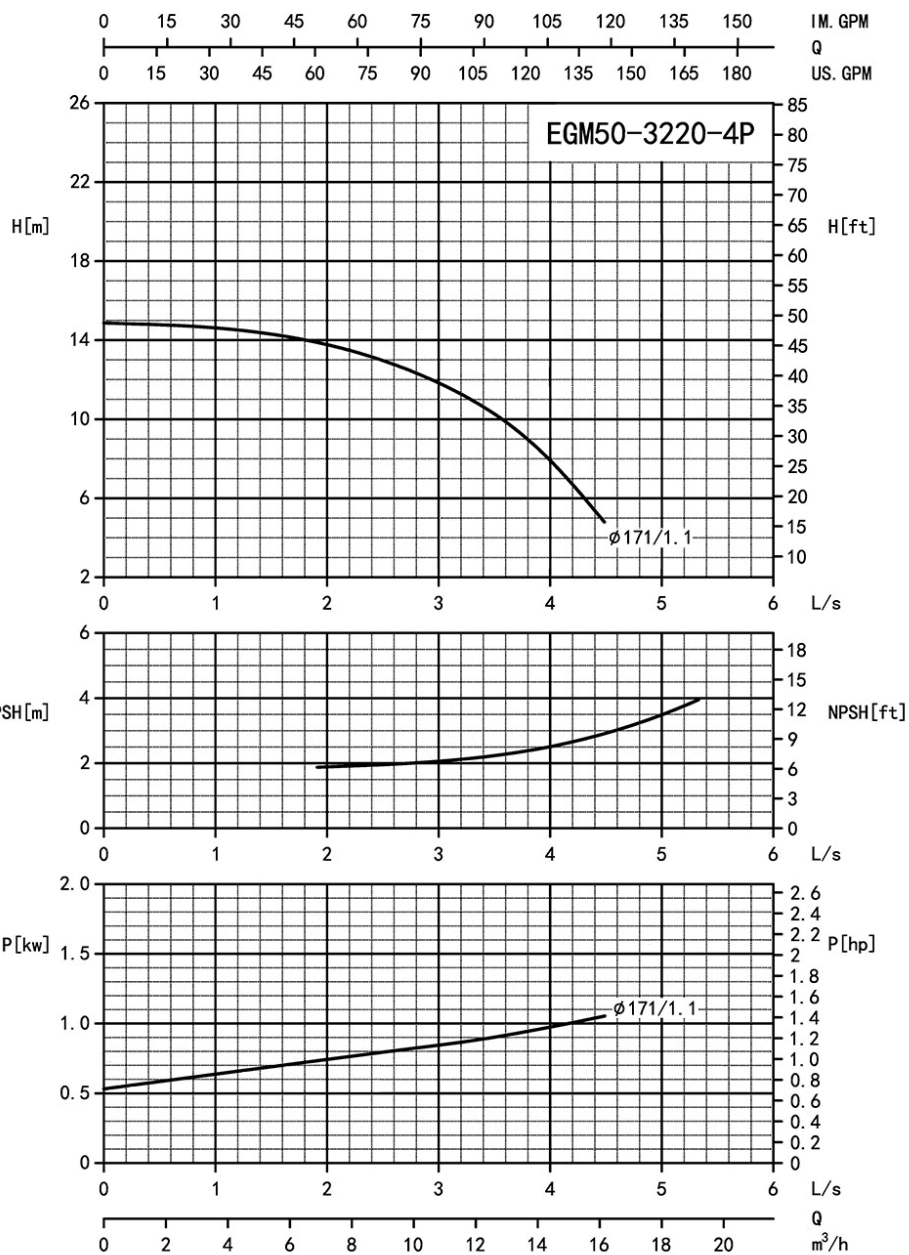
2

Receiver

From

 Company name
 Respons. Department
 Person in charge
 Phone number
 Fax no
 E-mail address

Model	Capacity			Head		Speed	Motor	Voltage	Phase	Impeller Diam.		Eff.	(NPSH)r
	m ³ /h	l/s	gpm	m	ft	r/min	hp	v		mm	inch	%	ft
EGM50-3220-01104	6.5	1.8	28.5	14	46	1710	1.5	230/460	3	171	6.7	35	6.6
	10.8	3	47.6	12	39		1.5					42	7.9
	13	3.6	57.1	10	33		1.5					39	9.8



Performance to ISO9906 Grade 2B for clean cold water only

EF-A01/1909

Project

Project ID

Created by

Created on

Last update



Parts List

Vertical In-line Pump - EGM50-3220-01104

Revision no.

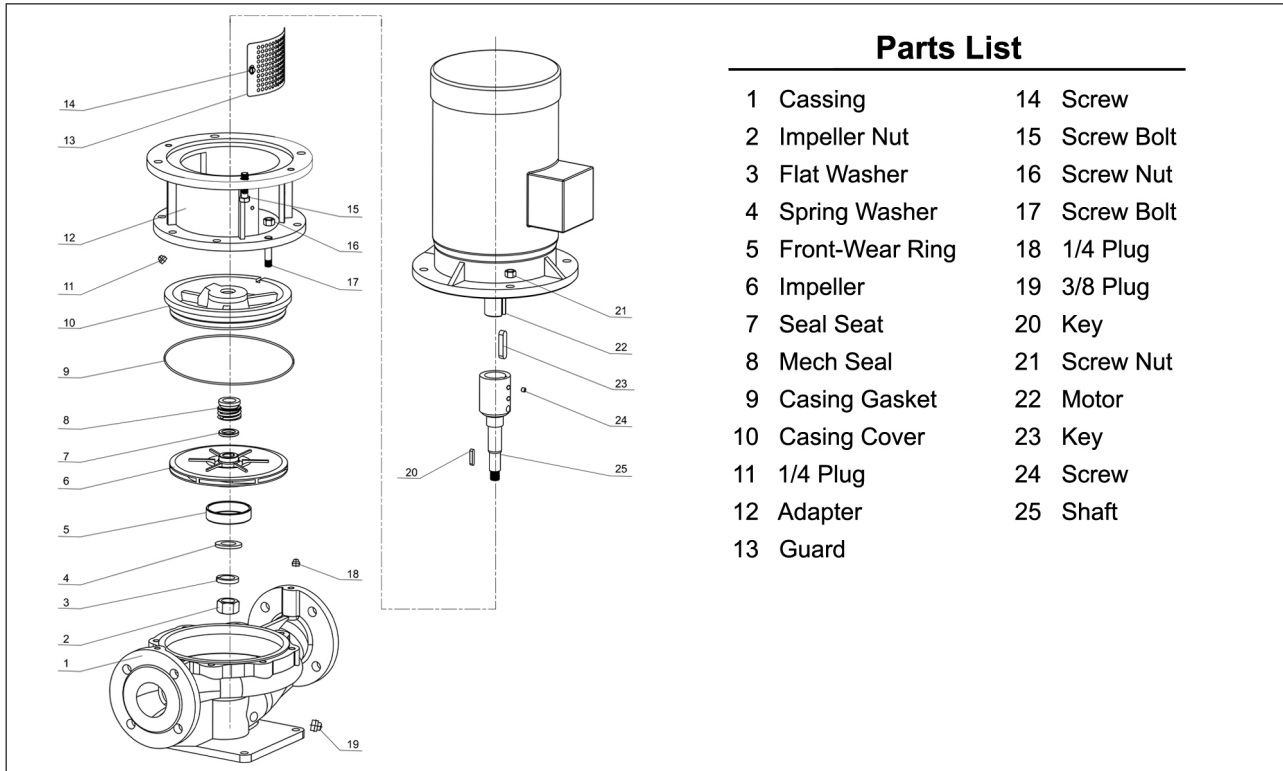
Page:

3

Receiver

From

 Company name
 Respons. Department
 Person in charge
 Phone number
 Fax no
 E-mail address



Project

Project ID

Created by

Created on

Last update