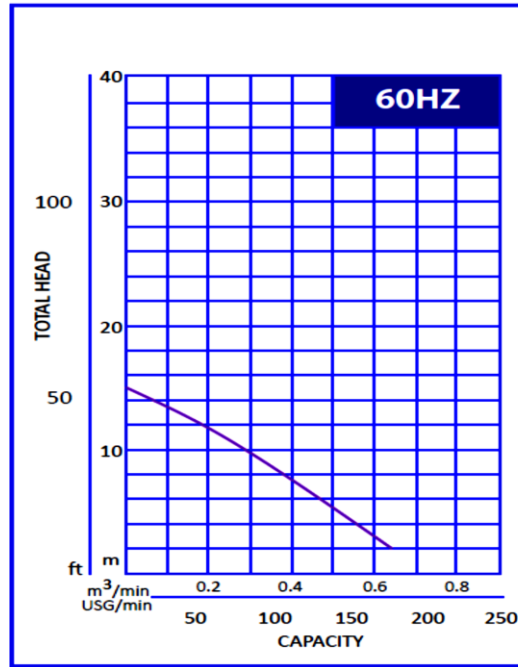


Pump Data

Brand :	Gol Pump		
Model :	GKT- 212 LN		
Head Rate:	33 FEET	Flow Rate:	80 GPM
Head Max:	50 FEET	Flow Max:	173 GPM
Head Min:	6 FEET	Flow Min:	5 GPM
RPM :	3600		
Normal Power P1 :	2 HP		
Fluid:	Water		
Fluid Temperature:	at about 25 °C.		
Density:	water 997 kg/m ³		
Fluid Viscosity:	8.90 × 10 ⁻⁴ Pa·s		
With Float switch	NONE		
Self Priming	Submersible		
Delivery size	3" NPT		
Suction size	With Strainer		
Made in :	TAIWAN		

GKT - 212LN



Motor Data

Power P2:			
Power P1:	1.5 KW		
Phase (PH):	1		
Rate Voltage :	220 V		
Capacitor Need :	*	µF	
Ferequency :	60 Hz		
Rated Speed (rpm):	3600 rpm		
Current (A):	4 A		
Cos φ :	0.95		
Degree of Protection (IP):	IP68		
Safety Protection Included :	*		
length of Cable :	3.5 10m	mm2× m	
Kind of Plug :	*		
Ambient Temp :	40°C = 104°F		

Other Pump Data

Impeller Size (mm) :	*
Pressuer Rating :	PN 16
Min. Fluid Temp :	10°C = 50°F
Max. Fluid Temp :	25°C = 77°F
Ambient Temp :	40°C = 104°F
Humidity % :	100%

Special Specification

Installation status :	Ver & Hor
Variable frequency :	NONE
Solid Passage	34 × 10 mm

Materials

Pump Body :	Cost Iron
Support:	Cast Iron
Impeller	High Chromium
Mechanical Seal:	Silicon Carbide
Rubber	NBR
Pump Shaft:	Stainless steel
Strainer	Stainless steel
outer cover:	Stainless steel
Motor:	Stainless steel

Shaft Seal

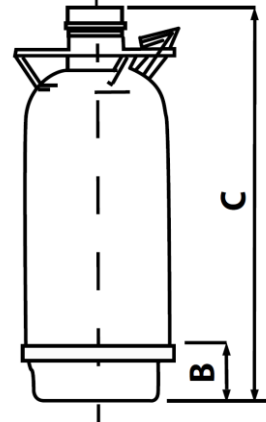
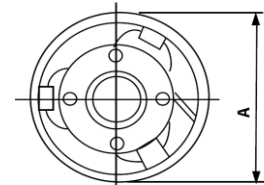
Type:	*
Stationary Part	Silicon Carbide
Rotating Part	Carbon
Elastomer	NBR

Pump and Motor specification optional

With Booster System	None
With Complack	None
Special Material	None
Specail Voltage	None

Protection system required

External Flout switch	None
Minimum Starter	Starter SWT



Weight :41 Kg

Standard Approve



Applicant:

Basement Drainage Water Supply for Landscape and Water Feature
 Agricultural and Horticultural Irrigation Water Supply for Fountains and
 Water Features Water Discharge Work for Ships Any Kind of Standing
 Water and Water Discharge Waste Water Treatment Construction
 Engineering Drainage System Agricultural Irrigation Fishing and Spraying

Dimention

in mm

A 228
 B 80
 C 650
 D
 E