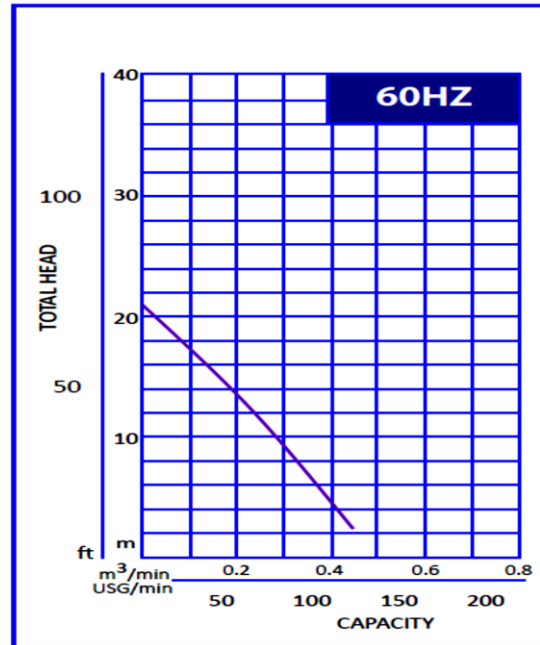


#### Pump Data

Brand :	Gol Pump		
Model :	GKT- 232 N		
Head Rate:	46 FEET	Flow Rate:	53 GPM
Head Max:	70 FEET	Flow Max:	114 GPM
Head Min:	6 FEET	Flow Min:	5 GPM
RPM :	3600		
Normal Power P1 :	2 HP		
Fluid:	Water		
Fluid Temperture:	at about 25 °C.		
Density:	water 997 kg/m <sup>3</sup>		
Fluid Viscosity:	8.90 × 10 <sup>-4</sup> Pa·s		
With Float switch	NONE		
Self Priming	Submersible		
Delivery size	2" NPT		
Suction size	With Strainer		
Made in :	TAIWAN		

#### GKT - 232N



#### Motor Data

Power P2:			
Power P1:	1.5 KW		
Phase (PH):	3		
Rate Voltage :	440 V		
Capacitor Need :	*	µF	
Ferequency :	60 Hz		
Rated Speed (rpm):	3600 rpm		
Current (A):	2 A		
Cos φ :	0.85		
Degree of Protection (IP):	IP68		
Safety Protection Included :	*		
length of Cable :	3.5 10m	mm2× m	
Kind of Plug :	*		
Ambient Temp :	40°C = 104°F		

#### Other Pump Data

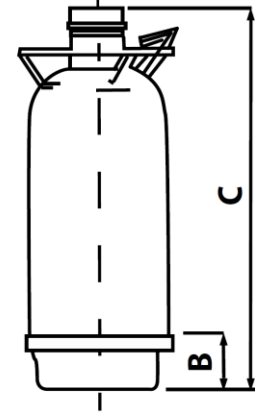
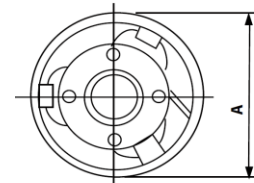
Impeller Size (mm) :	*
Pressuer Rating :	PN 16
Min. Fluid Temp :	10°C = 50°F
Max. Fluid Temp :	25°C = 77°F
Ambient Temp :	40°C = 104°F
Humidity % :	100%

#### Special Specification

Installation status :	Ver & Hor
Variable frequency :	NONE
Solid Passage	34 × 10 mm

#### Materials

Pump Body :	Cost Iron
Support:	Cast Iron
Impeller	High Chromium
Mechanical Seal:	Silicon Carbide
Rubber	NBR
Pump Shaft:	Stainless steel
Strainer	Stainless steel
outer cover:	Stainless steel
Motor:	Stainless steel



#### Shaft Seal

Type:	*
Stationary Part	Silicon Carbide
Rotating Part	Carbon
Elastomer	NBR

#### Pump and Motor specification optional

With Booster System	None
With Complack	None
Special Material	None
Specail Voltage	None

#### Protection system required

External Flout switch	None
Minimum Starter	Starter SWT

Weight: 37 Kg  
Standard Approve

CSA



UL



CE



Applicant:

- Basement Drainage Water Supply for Landscape and Water Feature
- Agricultural and Horticultural Irrigation Water Supply for Fountains and
- Water Features Water Discharge Work for Ships Any Kind of Standing
- Water and Water Discharge Waste Water Treatment Construction
- Engineering Drainage System Agricultural Irrigation Fishing and Spraying

Dimention

in	mm
A	228
B	80
C	550
D	
E	