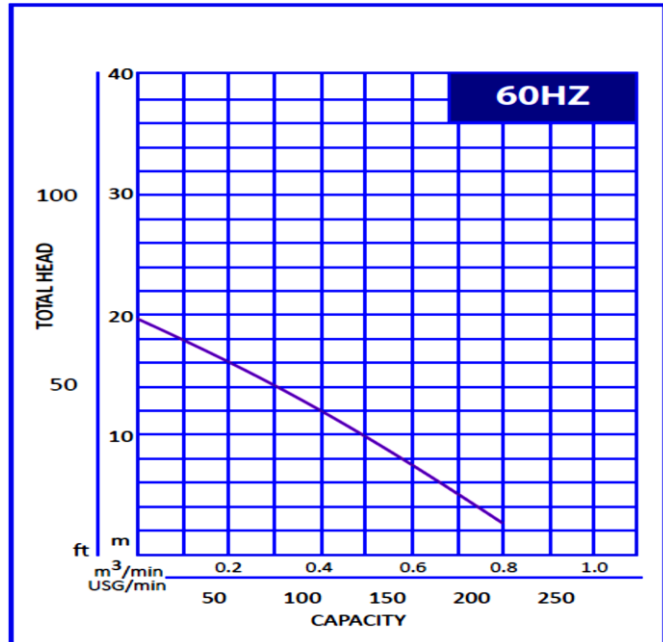


#### Pump Data

|                   |                              |            |         |
|-------------------|------------------------------|------------|---------|
| Brand :           | Gol Pump                     |            |         |
| Model :           | GKT- 332                     |            |         |
| Head Rate:        | 46 FEET                      | Flow Rate: | 80 GPM  |
| Head Max:         | 66 FEET                      | Flow Max:  | 213 GPM |
| Head Min:         | 6 FEET                       | Flow Min:  | 5 GPM   |
| RPM :             | 3600                         |            |         |
| Normal Power P1 : | 3 HP                         |            |         |
| Fluid:            | Water                        |            |         |
| Fluid Temperture: | at about 25 °C.              |            |         |
| Density:          | water 997 kg/m <sup>3</sup>  |            |         |
| Fluid Viscosity:  | 8.90 × 10 <sup>-4</sup> Pa·s |            |         |
| With Float switch | NONE                         |            |         |
| Self Priming      | Submersible                  |            |         |
| Delivery size     | 3" NPT                       |            |         |
| Suction size      | With Strainer                |            |         |
| Made in :         | TAIWAN                       |            |         |

#### GKT - 332



#### Motor Data

|                              |              |        |  |
|------------------------------|--------------|--------|--|
| Power P2:                    |              |        |  |
| Power P1:                    | 2.25 KW      |        |  |
| Phase (PH):                  | 3            |        |  |
| Rate Voltage :               | 440 V        |        |  |
| Capacitor Need :             | *            | µF     |  |
| Ferequency :                 | 60 Hz        |        |  |
| Rated Speed (rpm):           | 3600 rpm     |        |  |
| Current (A):                 | 3 A          |        |  |
| Cos φ :                      | 0.85         |        |  |
| Degree of Protection (IP):   | IP68         |        |  |
| Safety Protection Included : | *            |        |  |
| length of Cable :            | 3.5 10       | mm2× m |  |
| Kind of Plug :               | *            |        |  |
| Ambient Temp :               | 40°C = 104°F |        |  |

#### Other Pump Data

|                      |              |
|----------------------|--------------|
| Impeller Size (mm) : | *            |
| Pressuer Rating :    | PN 16        |
| Min. Fluid Temp :    | 10°C = 50°F  |
| Max. Fluid Temp :    | 25°C = 77°F  |
| Ambient Temp :       | 40°C = 104°F |
| Humidity % :         | 100%         |

#### Special Specification

|                       |            |
|-----------------------|------------|
| Installation status : | Ver & Hor  |
| Variable frequency :  | NONE       |
| Solid Passage         | 34 × 10 mm |

#### Materials

|                  |                 |
|------------------|-----------------|
| Pump Body :      | Cost Iron       |
| Support:         | Cast Iron       |
| Impeller         | High Chromium   |
| Mechanical Seal: | Silicon Carbide |
| Rubber           | NBR             |
| Pump Shaft:      | Stainless steel |
| Strainer         | Stainless steel |
| outer cover:     | Stainless steel |
| Motor:           | Stainless steel |

#### Shaft Seal

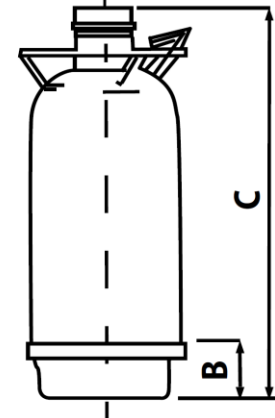
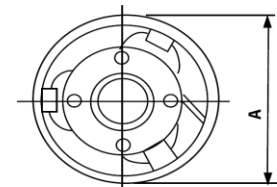
|                 |                 |
|-----------------|-----------------|
| Type:           | *               |
| Stationary Part | Silicon Carbide |
| Rotating Part   | Carbon          |
| Elastomer       | NBR             |

#### Pump and Motor specification optional

|                     |      |
|---------------------|------|
| With Booster System | None |
| With Complack       | None |
| Special Material    | None |
| Speccail Voltage    | None |

#### Protection system required

|                       |             |
|-----------------------|-------------|
| External Flout switch | None        |
| Minimum Starter       | Starter SWT |



Weight :47 Kg

Standard Approve



Applicant:

- Basement Drainage Water Supply for Landscape and Water Feature
- Agricultural and Horticultural Irrigation Water Supply for Fountains and
- Water Features Water Discharge Work for Ships Any Kind of Standing
- Water and Water Discharge Waste Water Treatment Construction
- Engineering Drainage System Agricultural Irrigation Fishing and Spraying

Dimention

in mm

|   |     |
|---|-----|
| A | 228 |
| B | 80  |
| C | 570 |