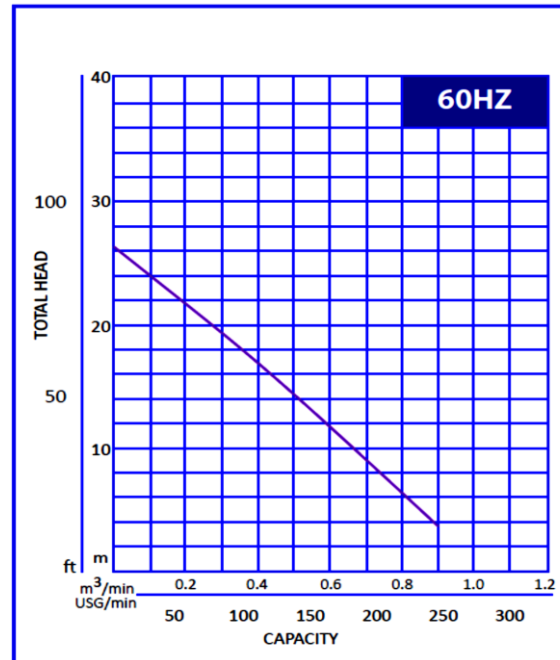


Pump Data

Brand :	Gol Pump	
Model :	GKT- 532	
Head Rate:	46 FEET	Flow Rate: 133 GPM
Head Max:	106 FEET	Flow Max: 240 GPM
Head Min:	13 FEET	Flow Min: 5 GPM
RPM :	3600	
Normal Power P1 :	5 HP	
Fluid:	Water	
Fluid Temperture:	at about 25 °C.	
Density:	water 997 kg/m ³	
Fluid Viscosity:	8.90 × 10 ⁻⁴ Pa-s	
With Float switch	NONE	
Self Priming	Submersible	
Delivery size	3" NPT	
Suction size	With Strainer	
Made in :	TAIWAN	

GKT - 532



Motor Data

Power P2:		
Power P1:	3.75 KW	
Phase (PH):	3	
Rate Voltage :	440 V	
Capacitor Need :	*	µF
Ferequency :	60 Hz	
Rated Speed (rpm):	3600 rpm	
Current (A):	5.5 A	
Cos φ :	0.85	
Degree of Protection (IP):	IP68	
Safety Protection Included :	*	
length of Cable :	3.5 10	mm2× m
Kind of Plug :	*	
Ambient Temp :	40°C = 104°F	

Other Pump Data

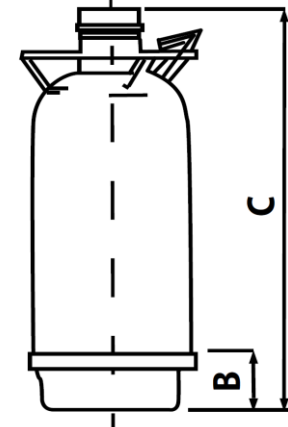
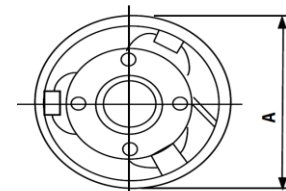
Impeller Size (mm) :	*
Pressuer Rating :	PN 16
Min. Fluid Temp :	10°C = 50°F
Max. Fluid Temp :	25°C = 77°F
Ambient Temp :	40°C = 104°F
Humidity % :	100%

Special Specification

Installation status :	Ver & Hor
Variable frequency :	NONE
Solid Passage	34 × 10 mm

Materials

Pump Body :	Cost Iron
Support:	Cast Iron
Impeller	High Chromium
Mechanical Seal:	Silicon Carbide
Rubber	NBR
Pump Shaft:	Stainless steel
Strainer	Stainless steel
outer cover:	Stainless steel
Motor:	Stainless steel



Shaft Seal

Type:	*
Stationary Part	Silicon Carbide
Rotating Part	Carbon
Elastomer	NBR

Weight :49 Kg

Standard Approve

CSA



UL



CE



Applicant:

- Basement Drainage Water Supply for Landscape and Water Feature
- Agricultural and Horticultural Irrigation Water Supply for Fountains and
- Water Features Water Discharge Work for Ships Any Kind of Standing
- Water and Water Discharge Waste Water Treatment Construction
- Engineering Drainage System Agricultural Irrigation Fishing and Spraying

Dimention

in mm

A	232
B	100
C	605

Pump and Motor specification optional

With Booster System	None
With Complack	None
Special Material	None
Specail Voltage	None

Protection system required

External Flout switch	None
Minimum Starter	Starter SWT