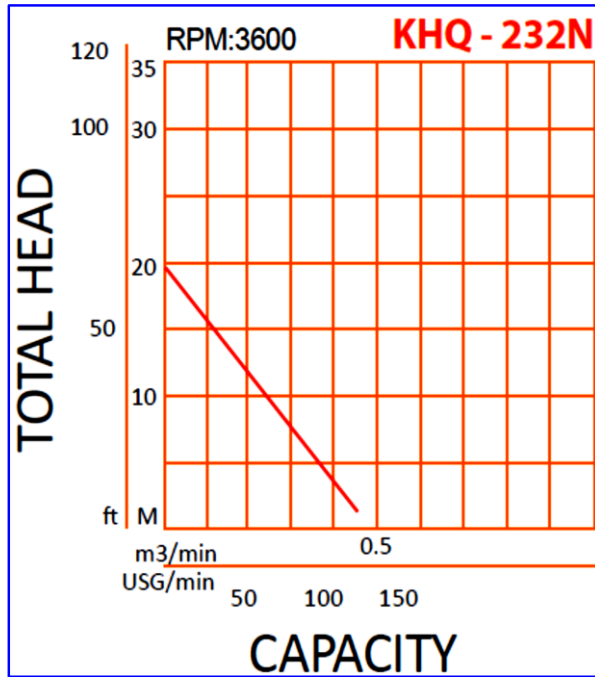


Pump Data		
Brand :	Gol Pump	
Model :	GKHQ- 232 N	
Head Rate: 40 FEET	Flow Rate:	50 GPM
Head Max: 66 FEET	Flow Max:	106 GPM
Head Min: 6 FEET	Flow Min:	5 GPM
RPM :	3600	
Normal Power P1 :	2 HP	
Fluid:	Water	
Fluid Temperature:	at about 25 °C.	
Density:	water 997 kg/m ³	
Fluid Viscosity:	8.90 × 10 ⁻⁴ Pa·s	
With Float switch	NONE	
Self Priming	Submersible	
Delivery size	2" NPT	
Suction size	With Strainer	
Made in :	TAIWAN	

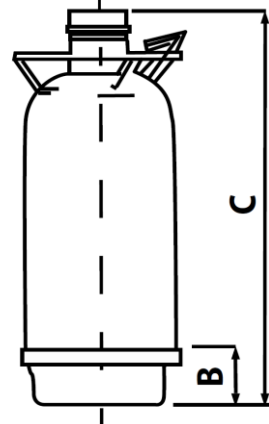
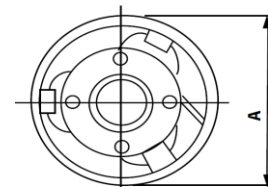


Motor Data		
Power P2:		
Power P1:	1.5 KW	
Phase (PH):	3	
Rate Voltage :	480 V	
Capacitor Need :	*	µF
Ferequency :	60 Hz	
Rated Speed (rpm):	3600 rpm	
Current (A):	2 A	
Cos φ :	0.85	
Degree of Protection (IP):	IP68	
Safety Protection Included :	*	
length of Cable :	3.5 10	mm2× m
Kind of Plug :	NONE	
Ambient Temp :	40°C = 104°F	

Other Pump Data		
Impeller Size (mm) :	*	
Pressuer Rating :	PN 16	
Min. Fluid Temp :	10°C = 50°F	
Max. Fluid Temp :	25°C = 77°F	
Ambient Temp :	40°C = 104°F	
Humidity % :	100%	

Special Specification		
Installation status :	Ver & Hor	
Variable frequency :	NONE	
Solid Passage	34 × 10	mm

Materials	
Pump Body :	Stainless steel
Support:	Stainless steel
Impeller	Stainless steel Casting
Mechanical Seal:	Silicon Carbide
Rubber	Viton
Pump Shaft:	Stainless steel
Strainer	Stainless steel
outer cover:	Stainless steel
Motor:	Stainless steel



Shaft Seal		Weight : 37 Kg	Standard Approve	Applicant:	Dimension in mm	
Type:	*					
Stationary Part	Silicon Carbide	CSA		Construction Excavation Sump Ditch Tunnel any Foundation Work and Storm Water Removal Factoties Waste Water Removal Sump pit Manhole Basement	A	228
Rotating Part	Silicon Carbide				B	460
Elastomer	Viton				C	460

Pump and Motor specification optional		UL		Excavation Tunnel and Storm Water Removal Home Cellar Sump Pit Plumbing Fountain and Swimming Pool Cleaning Farming Irrigation and
With Booster System	None			
With Complack	None			
Special Material	None			
Speacil Voltage	None	CE		Fire Protection Marine Bilge Fire Fighting and Wash Down The Pumps are Applicable in the Following Industries Chemistry Heavy Chemistry

Protection system required		CE		Medicines Pholograph Bleaching Food Fishery Drinks Brewing Oil and Lal Fiber Cosmetic Oirefining Metal Treatment and Electro Plating
External Flout switch	None			
Minimum Starter	Starter SWT			