

Pump Data

Brand :	Gol Pump	
Model :	GKHQ- 332	
Head Rate:	46 FEET	Flow Rate: 80 GPM
Head Max:	66 FEET	Flow Max: 213 GPM
Head Min:	6 FEET	Flow Min: 5 GPM
RPM :	3600	
Normal Power P1 :	3 HP	
Fluid:	Water	
Fluid Temperature:	at about 25 °C.	
Density:	water 997 kg/m³	
Fluid Viscosity:	8.90 × 10 ⁻⁴ Pa·s	
With Float switch	NONE	
Self Priming	Submersible	
Delivery size	3" NPT	
Suction size	With Strainer	
Made in :	TAIWAN	

Motor Data

Power P2:		
Power P1:	2.25 KW	
Phase (PH):	3	
Rate Voltage :	480 V	
Capacitor Need :	*	µF
Ferequency :	60 Hz	
Rated Speed (rpm):	3600 rpm	
Current (A):	3 A	
Cos φ :	0.85	
Degree of Protection (IP):	IP68	
Safety Protection Included :	*	
length of Cable :	3.5 10m	mm2× m
Kind of Plug :	NONE	
Ambient Temp :	40°C = 104°F	

Other Pump Data

Impeller Size (mm) :	*	
Pressuer Rating :	PN 16	
Min. Fluid Temp :	10°C = 50°F	
Max. Fluid Temp :	25°C = 77°F	
Ambient Temp :	40°C = 104°F	
Humidity % :	100%	

Special Specification

Installation status :	Ver & Hor	
Variable frequency :	NONE	
Solid Passage	34 × 10	

Materials

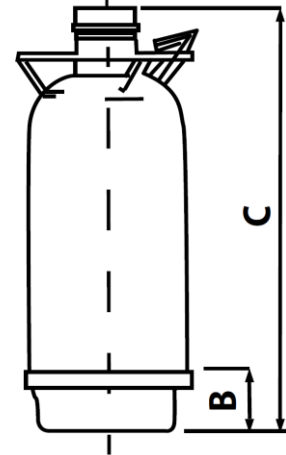
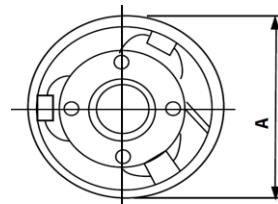
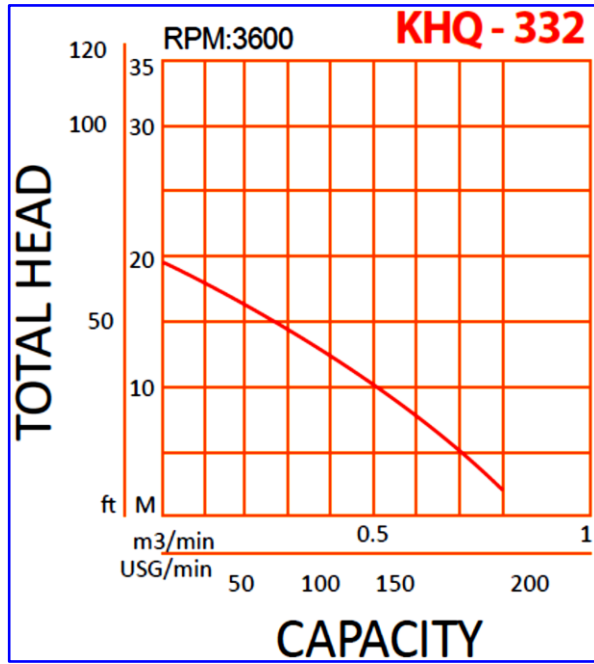
Pump Body :	Stainless steel	
Support:	Stainless steel	
Impeller	Stainless steel casting	
Mechanical Seal:	Silicon Carbide	
Rubber	Viton	
Pump Shaft:	Stainless steel	
Strainer	Stainless steel	
outer cover:	Stainless steel	
Motor:	Stainless steel	

Shaft Seal

Type:	*	
Stationary Part	Silicon Carbide	
Rotating Part	Silicon Carbide	
Elastomer	viton	
Pump and Motor specification optional		
With Booster System	None	
With Complack	None	
Special Material	None	
Specail Voltage	None	

Protection system required

External Flout switch	None	
Minimum Starter	Starter SWT	



Weight : 40 Kg	Standard Approve	Applicant:	Construction Excavation Sump Ditch Tunnel any Foundation Work and Storm Water Removal Factories Waste Water Removal Sump pit Manhole Basement	Dimension
CSA			Emergency Water Removal and Industrial Processing Water Buildings Sump Pit Plumbing and Storm Water Removal Mining Pit quarry Sump	in mm
UL	CE	Excavation Tunnel and Storm Water Removal Home Cellular Sump Pit Plumbing Fountain and Swimming Pool Cleaning Farming Irrigation and Fire Protection Marine Bilge Fire Fighting and Wash Down The Pumps are Applicable in the Following Industries Chemistry Heavy Chemistry Medicines Pholograph Bleaching Food Fishery Drinks Brewing Oil and Lal Fiber Cosmetic Oirefining Metal Treatment and Electro Plating	A	228
			B	
			C	570
			D	
			E	