

Pump Data

Brand : Gol Pump
Model : GKHQ-732

Head Rate: 56 FEET Flow Rate: 133 GPM
Head Max: 66 FEET Flow Max: 400 GPM
Head Min: 6 FEET Flow Min: 5 GPM

RPM : 3600
Normal Power P1 : 7.5 HP
Fluid: Water
Fluid Temperature: at about 25 °C.
Density: water 997 kg/m³
Fluid Viscosity: 8.90 × 10⁻⁴ Pa·s
With Float switch NONE
Self Priming Submersible
Delivery size 4" NPT
Suction size With Strainer
Made in : TAIWAN

Motor Data

Power P2:
Power P1: 5.625 KW
Phase (PH): 3
Rate Voltage : 480 V
Capacitor Need : * µF
Ferequency : 60 Hz
Rated Speed (rpm): 3600 rpm
Current (A): 8 A
Cos φ : 0.85
Degree of Protection (IP): IP68
Safety Protection Included : *
length of Cable : 5.5 10m mm2x m
Kind of Plug : NONE
Ambient Temp : 40°C = 104°F

Other Pump Data

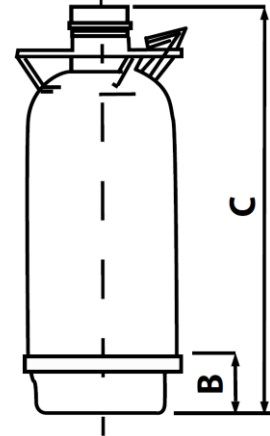
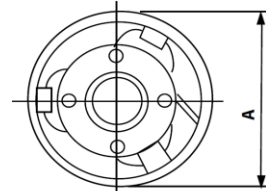
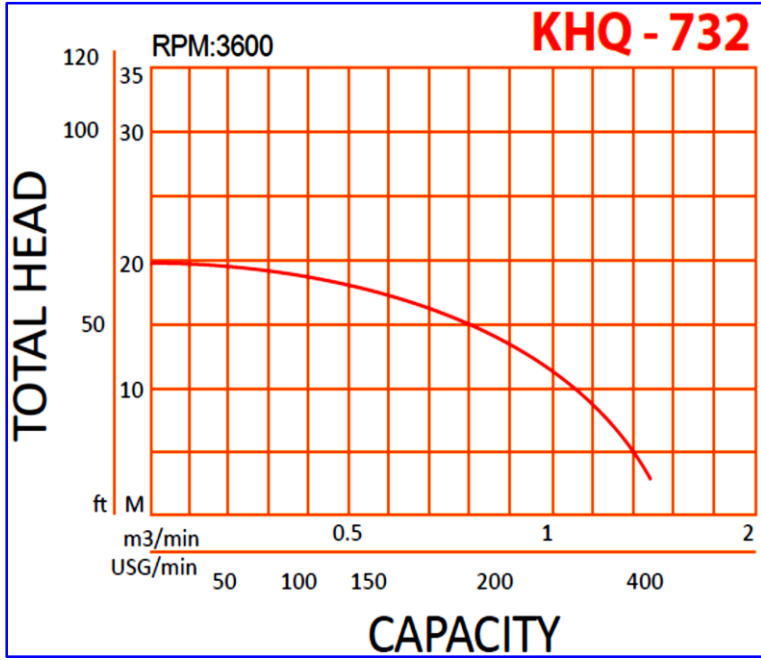
Impeller Size (mm) : *
Pressuer Rating : PN 16
Min. Fluid Temp : 10°C = 50°F
Max. Fluid Temp : 25°C = 77°F
Ambient Temp : 40°C = 104°F
Humidity % : 100%

Special Specification

Installation status : Ver & Hor
Variable frequency : NONE
Solid Passage 50 × 11 mm

Materials

Pump Body : Cast Iron
Support: Cast Iron
Impeller Stainless steel
Mechanical Seal: CA/CE/NBR,Inox
Rubber NBR
Pump Shaft: Stainless steel
Strainer Stainless steel
outer cover: Stainless steel
Motor: Stainless steel



Shaft Seal

Type: *
Stationary Part Ceramic
Rotating Part Carbon
Elastomer NBR

Weight : 70 Kg
Standard Approve



Applicant:

Construction Excavation Sump Ditch Tunnel any Foundation Work and Storm Water Removal Factories Waste Water Removal Sump pit Manhole Basement

Emergency Water Removal and Industrial Processing Water Buildings Sump Pit Plumbing and Storm Water Removal Mining Pit quarry Sump

Excavation Tunnel and Storm Water Removal Home Cellar Sump Pit Plumbing Fountain and Swimming Pool Cleaning Farming Irrigation and

Fire Protection Marine Bilge Fire Fighting and Wash Down The Pumps are Applicable in the Following Industries Chemistry Heavy Chemistry

Medicines Photograph Bleaching Food Fishery Drinks Brewing Oil and Lal Fiber Cosmetic Oirefining Metal Treatment and Electro Plating

Dimension

in mm
A 272
B
C 720

Pump and Motor specification optional

With Booster System None
With Complack None
Special Material None
Specail Voltage None

Protection system required

External Flout switch None
Minimum Starter Starter SWT