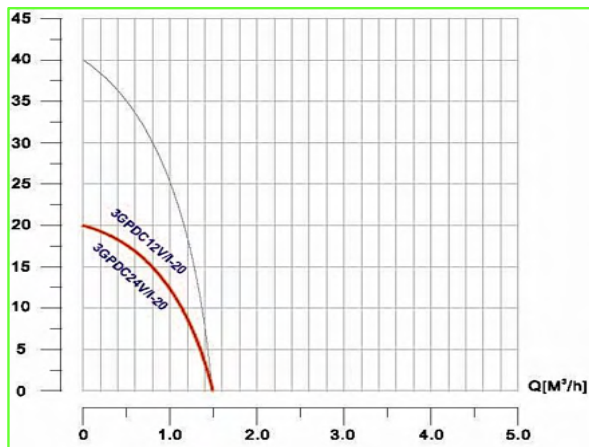


Pump Data

Brand :	Gol Pump		
Model :	3GPDC12V/1 -20		
Head Rate :	45 FEET	Flow Rate:	3.5 GPM
Head Min:	15 FEET	Flow Max:	6.6 GPM
Head Max:	60 FEET	Flow Min :	1 GPM
RPM :	5000 rpm		
Normal Power P1 :	0.33 HP		
Fluid:	Water		
Fluid Temperature:	at about 25 °C		
Density:	water 997 kg/m ³		
Fluid Viscosity:	8.90 × 10 ⁻⁴ Pa·s		
With Float switch	NONE		
Kind of Pump	Submersible		
Delivery size	1" Outlet with hose head		
Suction size	With Strainer		
Made in :	CHINA		



Motor Data

KIND OF Motor	with Brush
Power P1:	0.25 KW
Phase (PH):	DC SINGLE PHASE
Rate Voltage :	12 VDC
Capacitor Need :	NONE
Ferequency :	DC
Rated Speed (rpm):	5000 rpm
Current (A):	16 A
Cos φ :	1
Degree of Protection (IP):	IP 68
Safety Protection Included :	E
length of Cable :	20 M
Kind of Plug :	NONE
Ambient Temp :	40°C = 104°F

Other Pump Data

Impeller Model :	Noryl
Pressuer Rating :	PN 16
Min. Fluid Temp :	0°C = 32° F
Max. Fluid Temp :	90°C = 234° F
Ambient Temp :	40°C = 104° F
Humidity % :	100%

Special Specification

Installation status :	Vertical
Variable frequency :	NONE
Solid Passage:	80 Gr/M3

Materials

Pump Body :	Cast Iron
Diffuser :	Noryl
Impeller:	Noryl
Mechanical Seal:	CE/CA/NBR/INOX
Rubber:	NBR
Pump Shaft:	SUS 304
Strainer:	SUS 304
outer cover:	Cast Iron
Motor:	Cast Iron

Shaft Seal

Type:	*
Stationary Part:	Ceramic
Rotating Part:	Carbon
Elastomer:	NBR

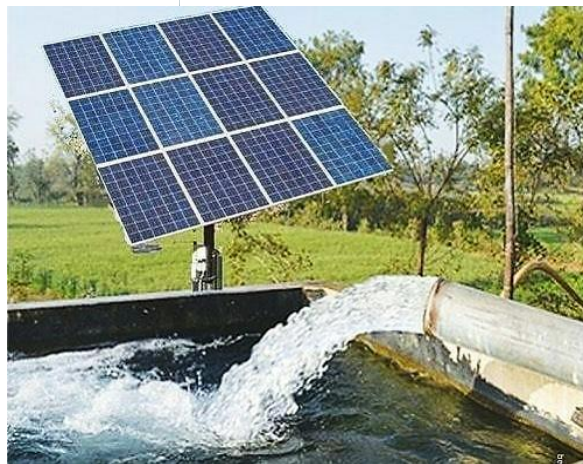
Standard Approve :

Weight : * Kg

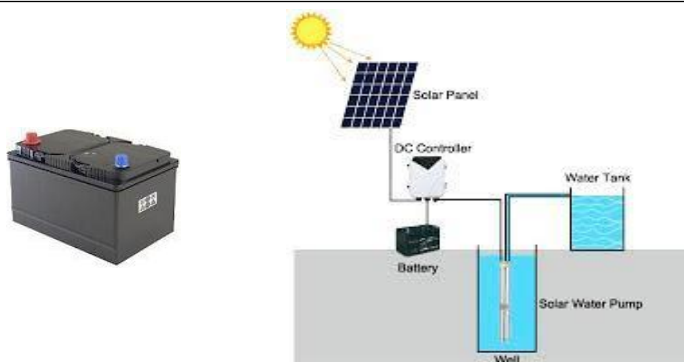
CE



Rev : 2021 / 02



Direct Connection to Solar Panel



Applicant :

- Irrigation, Livestock, Garden Fountains,
- Home Supply, Large Scale Watering System
- Commercial Establishments, Solar Water Treatment
- DC Solar Water Pump Connect to Solar Panel Directly
- DC Solar Water Pump Connect to Battery Directly