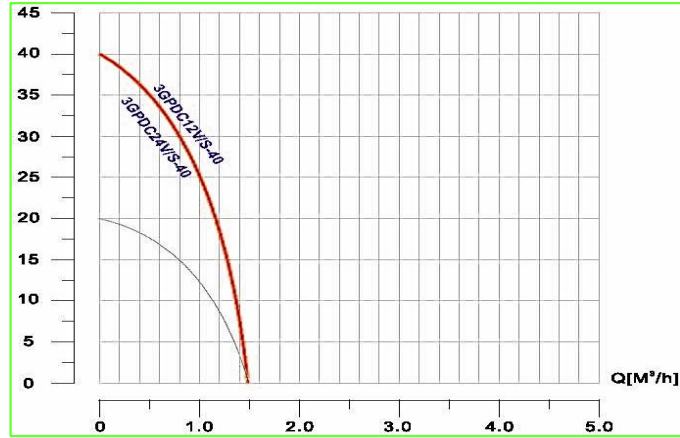


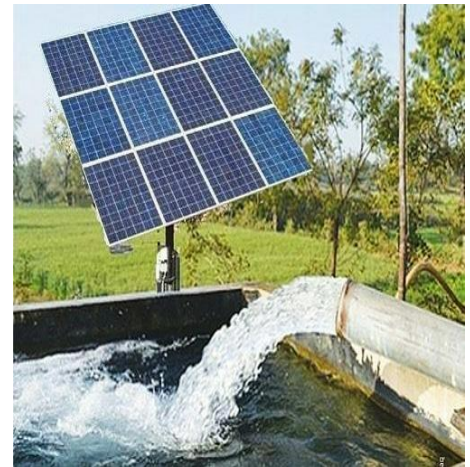
Pump Data

Brand :	Gol Pump		
Model :	3GPDC12V/S-40		
Head Rate :	90 FEET	Flow Rate:	3.5 GPM
Head Min:	15 FEET	Flow Max:	6.6 GPM
Head Max:	120 FEET	Flow Min :	1.3 GPM
RPM :	5000 rpm		
Normal Power P1 :	0.33 HP		
Fluid:	Water		
Fluid Temperature:	at about 25 °C		
Density:	water 997 kg/m ³		
Fluid Viscosity:	8.90 × 10 ⁻⁴ Pa·s		
With Float switch	NONE		
Kind of Pump	Submersible		
Delivery size	1" Outlet with hose head		
Suction size	With Strainer		
Made in :	CHINA		



Motor Data

KIND OF Motor	with Brush		
Power P1:	0.25 KW		
Phase (PH):	DC SINGLE PHASE		
Rate Voltage :	12 VDC		
Capacitor Need :	NONE		
Ferequency :	DC		
Rated Speed (rpm):	5000 rpm		
Current (A):	16 A		
Cos φ :	1		
Degree of Protection (IP):	IP 68		
Safety Protection Included :	E		
length of Cable :	20 M		
Kind of Plug :	NONE		
Ambient Temp :	40°C = 104°F		



Other Pump Data

Impeller Model :	SCREW Impeller		
Pressuer Rating :	PN 16		
Min. Fluid Temp :	0°C = 32° F		
Max. Fluid Temp :	90°C = 234°F		
Ambient Temp :	40°C = 104°F		
Humidity % :	100%		

Special Specification

Installation status :	Vertical		
Variable frequency :	NONE		
Solid Passage:	80	Gr/M3	

Materials

Pump Body :	Cast Iron		
Diffuser :	Rubber		
Impeller:	SCREW Impeller		
Mechanical Seal:	CE/CA/NBR/INOX		
Rubber:	NBR		
Pump Shaft:	SUS 304		
Strainer:	SUS 304		
outer cover:	Cast Iron		
Motor:	Cast Iron		

Shaft Seal

Type:	*		
Stationary Part:	Ceramic		
Rotating Part:	Carbon		
Elastomer:	NBR		

Standard Approve :

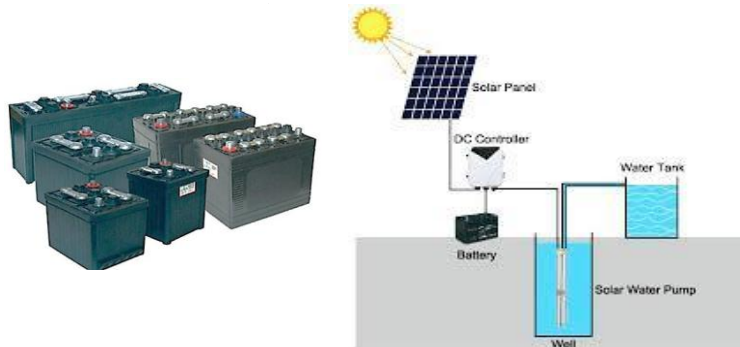
Weight : * Kg

CE



Rev : 2021 / 02

Direct Connection to Solar Panel



Applicant :

- Irrigation, Livestock, Garden Fountains,
- Home Supply, Large Scale Watering System
- Commercial Establishments, Solar Water Treatment
- DC Solar Water Pump Connect to Solar Panel Directly
- DC Solar Water Pump Connect to Battery Directly