

# Hydraulic pump

## HY50A/B



| PUMP SPECIFICATIONS                    | Mod. A                        | Mod. B       |
|--|-------------------------------|--------------|
| Capacity [m <sup>3</sup> /h - (USGPM)] | 110 - (484)                   | 170 - (748)  |
| Head [m - (ft)]                        | 44 - (143)                    | 38 - (123.5) |
| Impeller diameter [mm - (in)]/type     | 490 - (19.6) /2 blades closed |              |
| Flanged bore size [DN.../PN... - (in)] | 100 - (4)                     | 150 - (6)    |
| Cross section diameter [mm - (in)]     | 35 - (1.4)                    |              |
| Weight [kg - (lbs)]                    | 600 - (1320)                  | 610 - (1342) |

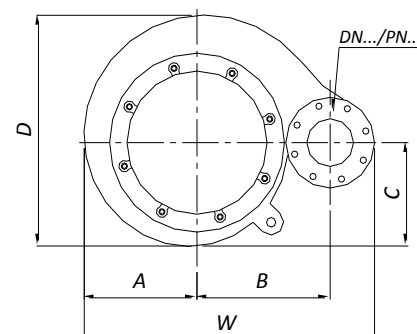
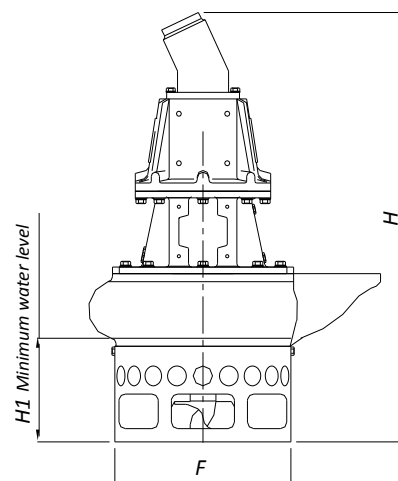
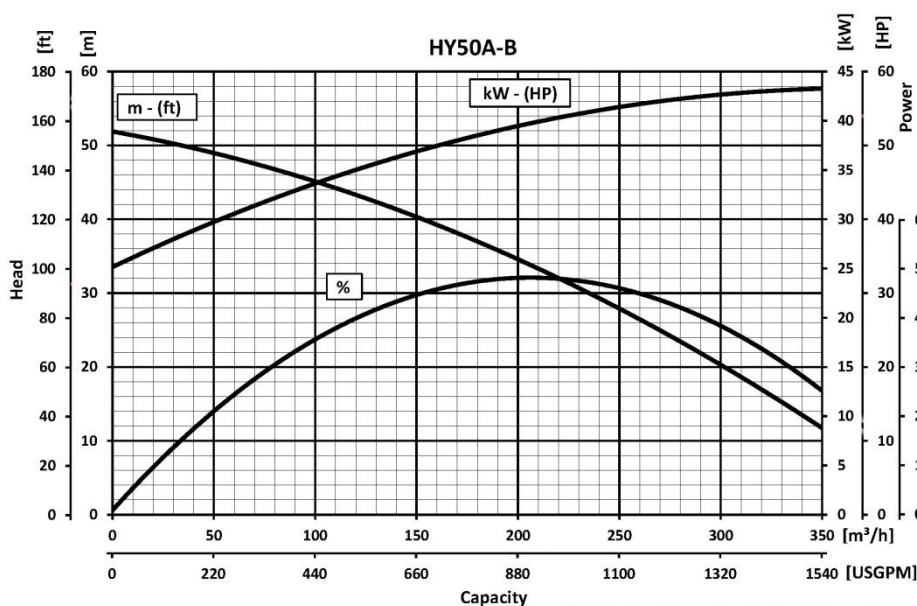
| HYDRAULIC MOTOR                     |              |
|-------------------------------------|--------------|
| Motor displacement [cc - (cu in)]   | 75 - (4.5)   |
| Max. oil flow rate[l/min - (USGPM)] | 90 - (24)    |
| Max. pressure [bar - (psi)]         | 300 - (4350) |
| Power [kW-HP]                       | 45-60        |
| Speed [RPM]                         | 1180         |

| MATERIALS     |   |
|---------------|---|
| Casing        | Spheroidal cast iron EN-GJS-500-7 (EN 1563) |
| Motor housing | Cast iron EN-GJL-250 (EN 1561)              |
| Wear parts    | High chrome EN-GJN-HV600 (XCr18) (EN 12513) |
| Main shaft    | High tensile steel 39NiCrMo3 (AISI 9840)    |

| SEALS / LUBRICANT   |                                     |
|---------------------|-------------------------------------|
| Motor side seals    | 2 lip seals (BUNA)                  |
| Impeller side seals | 3 lip seals (BUNA) + 1 V-RING (TPU) |
| Oil type            | ISO 320                             |

| DIMENSIONS [mm - (in)] |        |      |      |      |      |        |        |
|------------------------|--------|------|------|------|------|--------|--------|
| H                      | W      | D    | F    | H1   | A    | B      | C      |
| 1330                   | 902    | 774  | 600  | 274  | 374  | 418    | 363    |
| (53.2)                 | (36.8) | (31) | (24) | (11) | (15) | (16.8) | (14.5) |

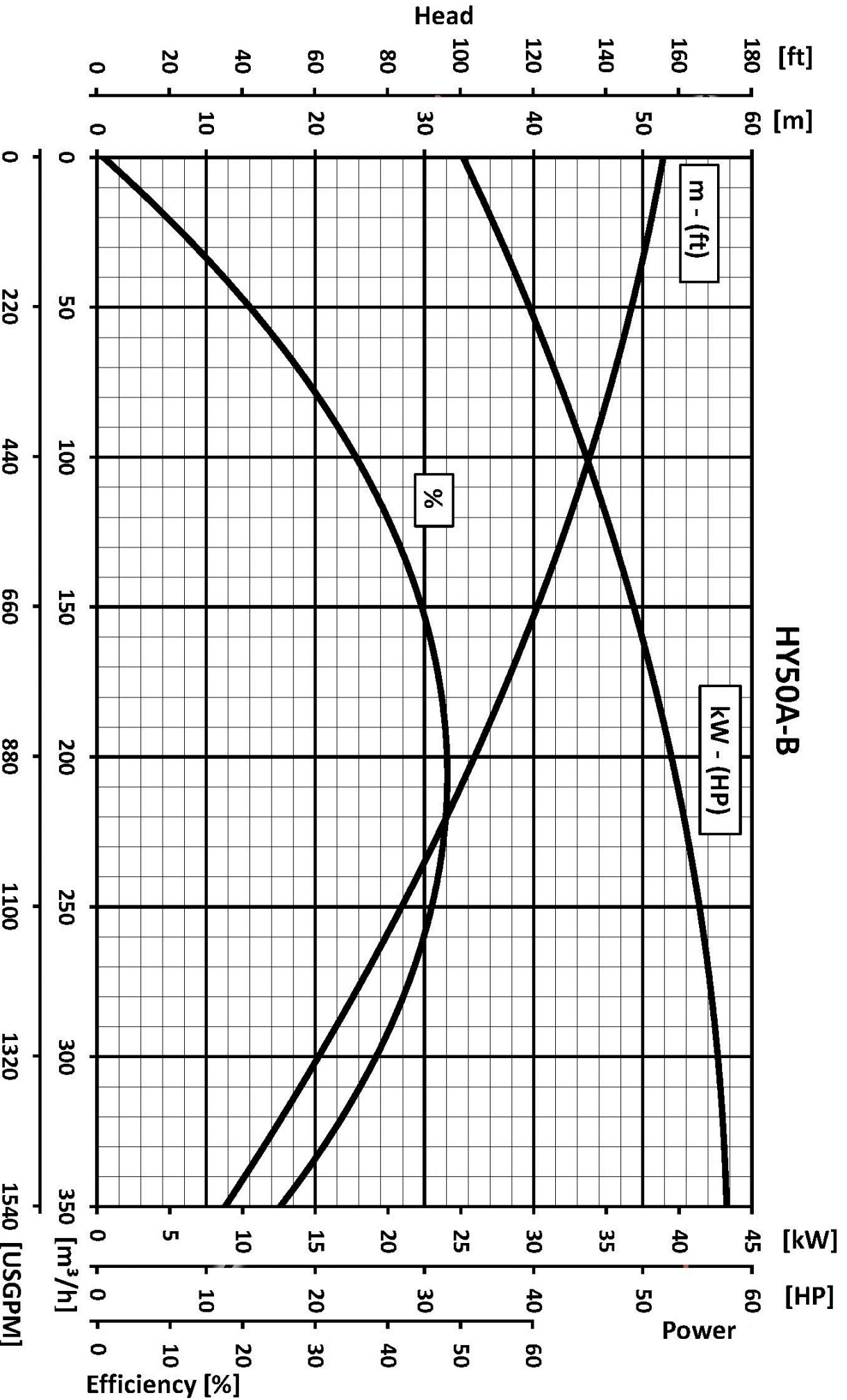
### PERFORMANCE CURVES



We reserve the right to make changes without notice.

**DRAGFLOW**  
ULTIMATE EFFICIENCY

# HYS0A-B



We reserve the right to make changes without notice