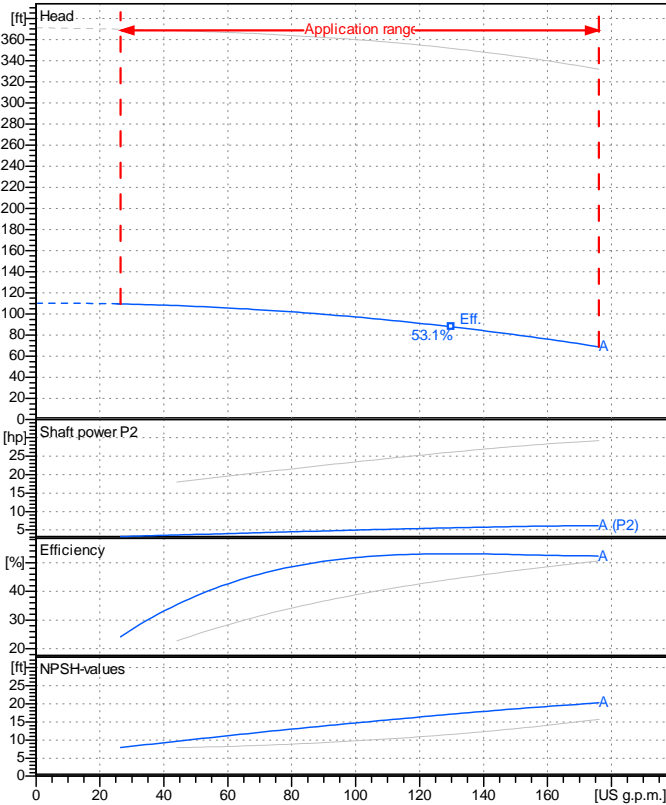


# JNCB 32-250A (1800RPM)



## Data specification

Inlet pressure	psi 1.42
Fluid	Water, pure
Operating temperature t A	°F 68
Density at t A	lb/ft³ 62.32
Kin. viscosity at t A	ft²/s 1.082E-5

## Pump

Pump name	NCB 32-250 A		
Size	50/32/250		
Design			
Speed rpm	1800	No of stages	1
Impeller type			
Flow	Nominal	US g.p.m.	
	Max-	US g.p.m.	176
	Min-	US g.p.m.	26.4
Head	Nominal	ft	
	Max-	ft	110
	Min-	ft	69
Head H(Q=0)	ft		110
NPSH 3%	ft		
Max. working pressure	psi		47.7
Shaft power	hp		
Efficiency	%		
Max absorbed power	hp	6.1563	

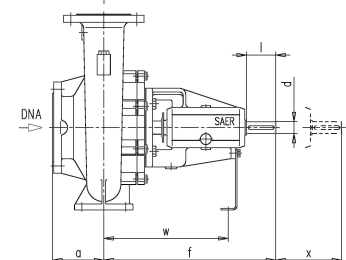
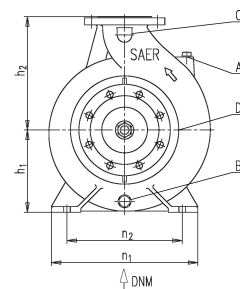
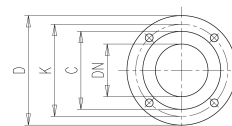
## Materials Pump

Shaft	Stainless steel AISI 431 (1.4057)
Impeller	Cast iron EN-GJL-250
Pump body	Cast iron EN-GJL-250
Seal disc	Cast iron EN-GJL-250
Gasket	Natural fiber
Mech. seal EN 12756	
Seal face	Carbon graphite resin impreg.
Seat	Alumina Oxide
Rubber elements	EPDM Rubber
Spring and metal bellows	Stainless steel AISI 316

## Dimensions in inch

a	3 <sup>15</sup> / <sub>16</sub>	n2	9 <sup>13</sup> / <sub>16</sub>
A	3/8"	s	9/16
B	3/8"	t	1 <sup>1</sup> / <sub>16</sub>
b	2 <sup>9</sup> / <sub>16</sub>	u	5/16
C	1/4"	w	10 <sup>1</sup> / <sub>4</sub>
d k6	1 <sup>5</sup> / <sub>16</sub>	x	3 <sup>15</sup> / <sub>16</sub>

DNA	DN 50
DNM	DN 32
f	14 <sup>3</sup> / <sub>16</sub>
h1	7 <sup>1</sup> / <sub>16</sub>
h2	8 <sup>7</sup> / <sub>8</sub>
l	1 <sup>15</sup> / <sub>16</sub>
m1	4 <sup>15</sup> / <sub>16</sub>
m2	3 <sup>3</sup> / <sub>4</sub>
n1	12 <sup>5</sup> / <sub>8</sub>



C	3/16	C	4
D	5/2	D	6 1/2
DN	1/4	DN	1 15/16
K	3 15/16	K	4 15/16
n°	3/16	n°	3/16
Øn	3/4	Øn	3/4

