

Gol Pumps Thechnology

DATA SHEET

SOLAR PUMP

IMPELLER PUMP

Gol Pumps Technology INC

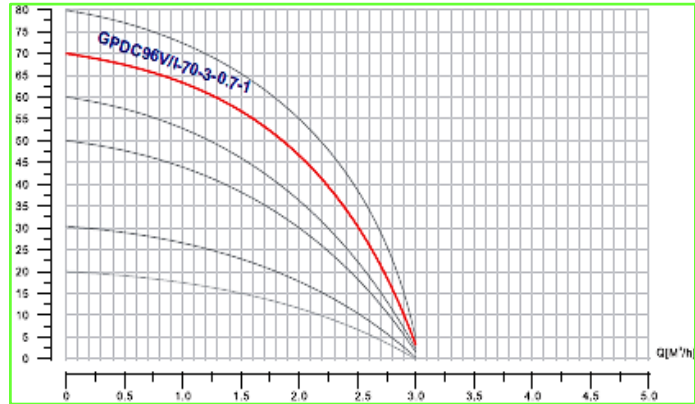
www.golpumps.com

www.golpumps.us

Email : info@golpumps.com

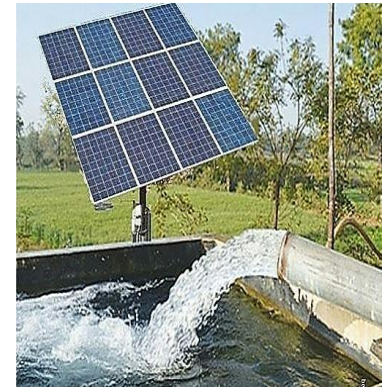
Pump Data

| | | | |
|--------------------|------------------------------|------------|----------|
| Brand : | Gol Pump | | |
| Model : | GPDC96V/I -70-3- 0.7-1 | | |
| Head Rate : | 170 FEET | Flow Rate: | 6.6 GPM |
| Head Min: | 45 FEET | Flow Max: | 12.2 GPM |
| Head Max: | 210 FEET | Flow Min : | 2.2 GPM |
| RPM : | 5000 rpm | | |
| Normal Power P1 : | 0.93 HP | | |
| Fluid: | Water | | |
| Fluid Temperature: | at about 25 °C | | |
| Density: | water 997 kg/m ³ | | |
| Fluid Viscosity: | 8.90 × 10 ⁻⁴ Pa·s | | |
| With Float switch | NONE | | |
| Kind of Pump | Submersible | | |
| Delivery size | 1" Outlet with hose head | | |
| Suction size | With Strainer | | |
| Made in : | CHINA | | |



Motor Data

| | | | |
|------------------------------|-----------------|--|--|
| KIND OF Motor | with Brush | | |
| Power P1: | 0.7 KW | | |
| Phase (PH): | DC SINGLE PHASE | | |
| Rate Voltage : | 96 VDC | | |
| Capacitor Need : | NONE | | |
| Ferequency : | DC | | |
| Rated Speed (rpm): | 5000 rpm | | |
| Current (A): | 7.3 A | | |
| Cos φ : | 1 | | |
| Degree of Protection (IP): | IP 68 | | |
| Safety Protection included : | E | | |
| length of Cable : | 20 M | | |
| Kind of Plug : | NONE | | |
| Ambient Temp : | 40°C = 104°F | | |



Other Pump Data

| | | | |
|-------------------|--------------|--|--|
| Impeller Model : | Noryl | | |
| Pressuer Rating : | PN 16 | | |
| Min. Fluid Temp : | 0°C = 32° F | | |
| Max. Fluid Temp : | 90°C = 234°F | | |
| Ambient Temp : | 40°C = 104°F | | |
| Humidity % : | 100% | | |

Special Specification

| | | | |
|-----------------------|----------|-------|--|
| Installation status : | Vertical | | |
| Variable frequency : | NONE | | |
| Solid Passage: | 80 | Gr/M3 | |

Materials

| | | | |
|------------------|----------------|--|--|
| Pump Body : | Cast Iron | | |
| Diffuser : | Noryl | | |
| Impeller: | Noryl | | |
| Mechanical Seal: | CE/CA/NBR/INOX | | |
| Rubber: | NBR | | |
| Pump Shaft: | SUS 304 | | |
| Strainer: | SUS 304 | | |
| outer cover: | Cast Iron | | |
| Motor: | Cast Iron | | |

Shaft Seal

| | | | |
|------------------|---------|--|--|
| Type: | * | | |
| Stationary Part: | Ceramic | | |
| Rotating Part: | Carbon | | |
| Elastomer: | NBR | | |

Standard Approve :

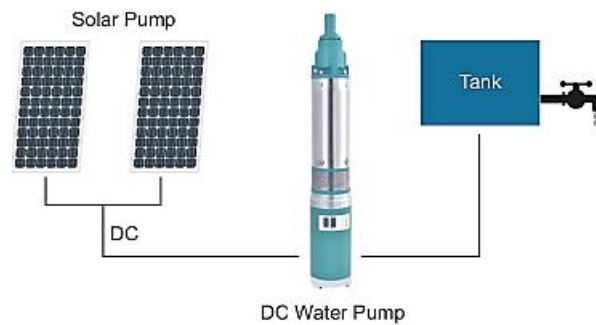
Weight : * Kg

CE



Rev : 2021 / 02

Direct Connection to Solar Panel



Applicant :

Irrigation, Livestock, Garden Fountains,

Home Supply, Large Scale Watering System

Commercial Establishments, Solar Water Treatment

DC Solar Water Pump Connect to Solar Panel Directly

DC Solar Water Pump Connect to Battery Directly