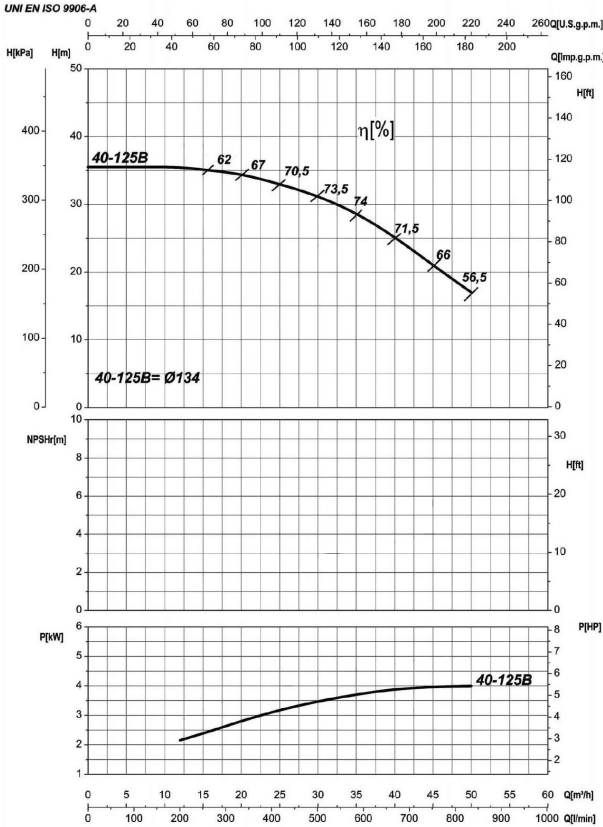


Company name  
 Respons. Department  
 Person in charge  
 Phone number  
 Fax no  
 E-mail address

Receiver

From



### Operating data specification

Nominal flow	US g.p.m. 0
Nominal head	ft 0
Static head	ft 0
NPSH - v value of plant	ft 0
Inlet pressure	psi 1.42
Fluid	Water, pure
Operating temperature t A	°F 68
Density at t A	lb/ft³ 62.32
Kin. viscosity at t A	ft²/s 1.082E-5

### Pump

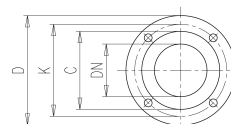
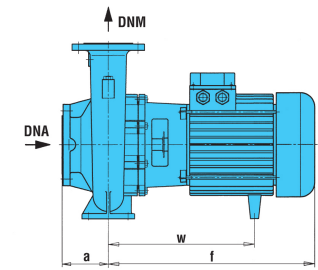
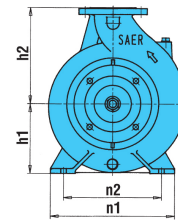
Pump name	6IR40-125B		
Size	65/40/125		
Design			
Speed rpm	3600	No of stages	1
Impeller type			
Flow	Nominal	US g.p.m.	
	Max-	US g.p.m. 220	
	Min-	US g.p.m. 52.8	
Head	Nominal	ft	
	Max-	ft 116	
	Min-	ft 55.5	
Head H(Q=0)	ft 116		
NPSH 3%	ft		
Max. working pressure	psi 50.4		
Shaft power	hp		
Efficiency	%		
Max absorbed power	hp 5.4093		

### Materials Pump

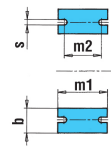
Shaft	Stainless steel AISI 431 (1.4057)		
Impeller	Cast iron EN-GJL-250		
Pump body	Cast iron EN-GJL-250		
Seal disc	Cast iron EN-GJL-250		
Gasket	Natural fiber		
Mechanical seal	BVEG (Grafito/Ossido Allumina/EPDM)		

### Dimensions in inch

- a 3<sup>1</sup>/<sub>8</sub>
- b 1<sup>15</sup>/<sub>16</sub>
- DNA 2<sup>9</sup>/<sub>16</sub>
- DNM 1<sup>9</sup>/<sub>16</sub>
- f 15<sup>1</sup>/<sub>2</sub>
- h1 4<sup>7</sup>/<sub>16</sub>
- h2 5<sup>1</sup>/<sub>2</sub>
- m1 3<sup>15</sup>/<sub>16</sub>
- m2 2<sup>3</sup>/<sub>4</sub>
- n1 8<sup>1</sup>/<sub>4</sub>
- n2 6<sup>5</sup>/<sub>16</sub>
- s 9<sup>1</sup>/<sub>16</sub>
- w 10<sup>11</sup>/<sub>16</sub>



- C 3<sup>3</sup>/<sub>16</sub>
- D 5<sup>7</sup>/<sub>8</sub>
- DN 1<sup>9</sup>/<sub>16</sub>
- K 4<sup>5</sup>/<sub>16</sub>
- n° 3<sup>1</sup>/<sub>16</sub>
- ø 3<sup>1</sup>/<sub>4</sub>
- C 4<sup>13</sup>/<sub>16</sub>
- D 7<sup>5</sup>/<sub>16</sub>
- DN 2<sup>9</sup>/<sub>16</sub>
- K 5<sup>11</sup>/<sub>16</sub>
- n° 3<sup>1</sup>/<sub>16</sub>
- ø 3<sup>1</sup>/<sub>4</sub>



<b>Motor</b>	Frame size	112 M		
Manufacturer / Type	SAER	MEC112M-2P-4		
Rated power	hp	5.3641	Efficiency 4/4	85.5 %
Electric current	A	14.7 A	Speed rpm	3600
Electric voltage	V	230V	3~	Hz 60
Starting mode	Unknown			
Degree of protection	IP 55	Insulation class	F	

Remarks:

Project	Project ID	Created by	Created on	Last update
			2022-08-01	

Receiver

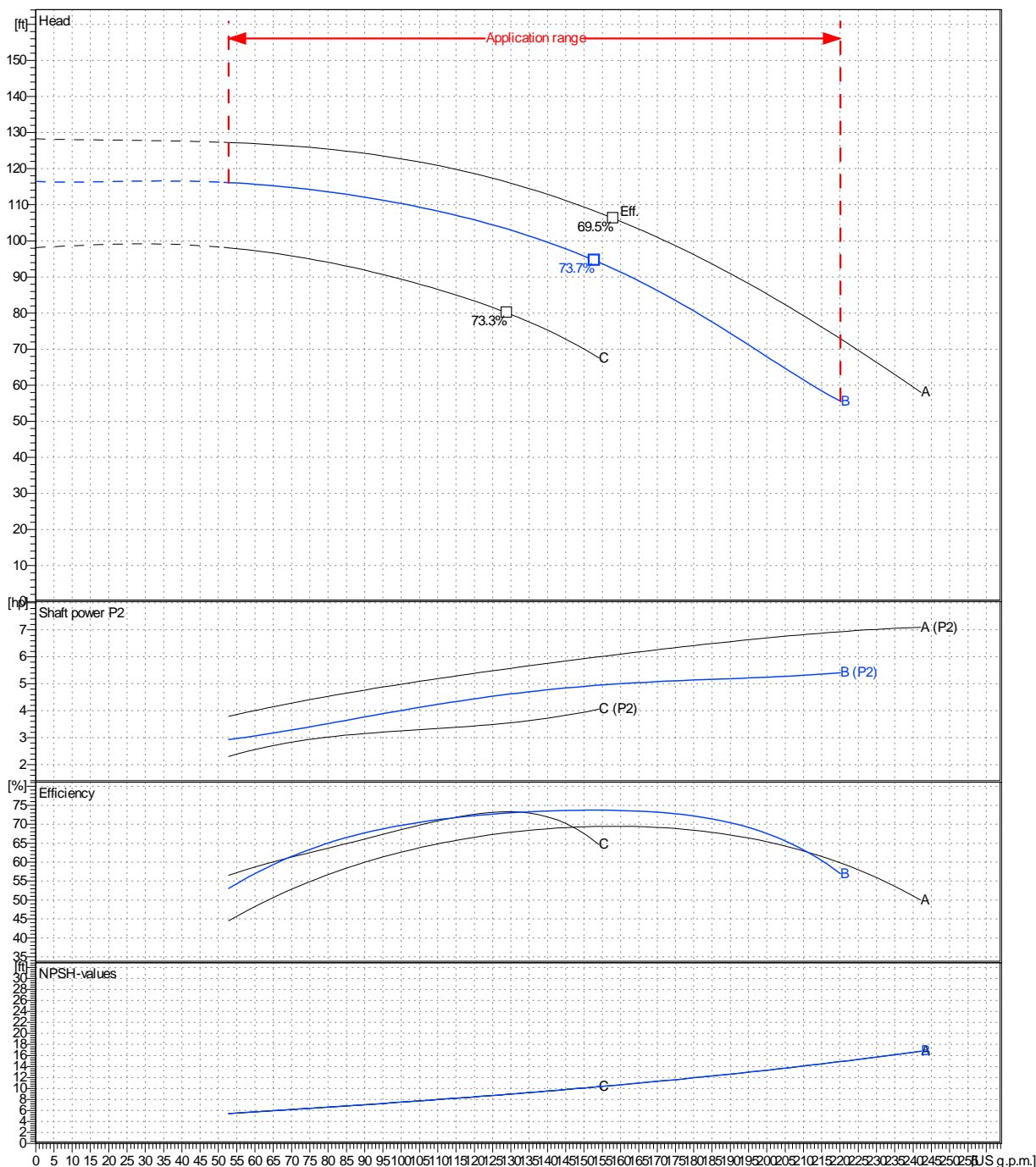
From

 Company name  
 Respons. Department  
 Person in charge  
 Phone number  
 Fax no  
 E-mail address

Operating area	Flow	Head	Impeller type
Operating data specification	0 US g.p.m.	0 ft	Impeller construction: Closed
Pump data	US g.p.m.		Sense of rotation: Clockwise from the drive end
	ft		Outlet width: DN 40
	Flow		Speed: rpm 3600
	Min.	Max.	Frequency: Hz 60 Hz
	US g.p.m.	US g.p.m.	
	Head	Shaft power P2	
	H(Q=0)	P2(Q=0)	
	η Max.	Max. η	
	ft	hp	
	ft	hp	
	US g.p.m.	US g.p.m.	
	116	94.6	
		5.41	
		4.94	

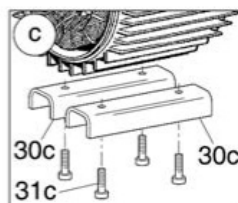
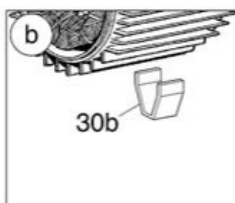
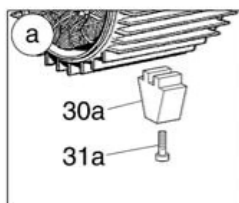
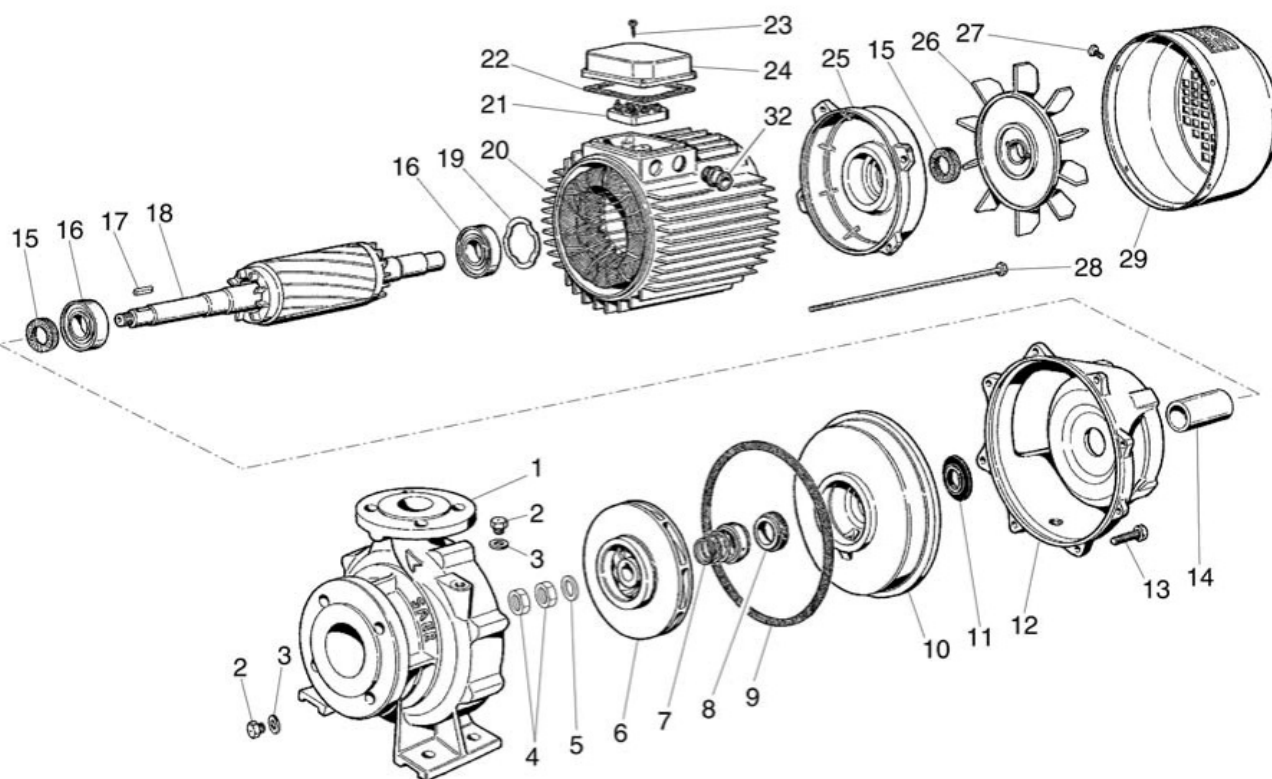
Performance data based to: Water, pure [100%]; 68°F; 62.3lb/ft³; 1.08E-5ft²/s

UNI EN ISO 9906:2012 - Grade 3B



Project	Project ID	Created by	Created on	Last update
			<b>2022-08-01</b>	

Company name  
Respons. Department  
Person in charge  
Phone number  
Fax no  
E-mail address



Project

Project ID

Created by

Created on  
**2022-08-01**

Last update