

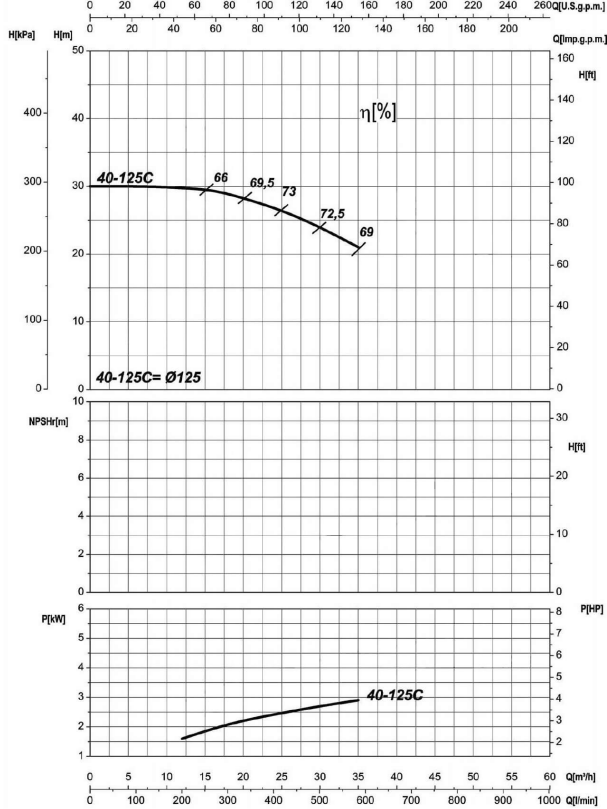
Receiver

From

 Company name
 Respons. Department
 Person in charge
 Phone number
 Fax no
 E-mail address

| | |
|--|--|
| | |
| | |
| | |
| | |
| | |
| | |

UNI EN ISO 9906-A



Operating data specification

| | | |
|---------------------------|-----------|-------------|
| Nominal flow | US g.p.m. | 0 |
| Nominal head | ft | 0 |
| Static head | ft | 0 |
| NPSH - v value of plant | ft | 0 |
| Inlet pressure | psi | 1.42 |
| Fluid | | Water, pure |
| Operating temperature t A | °F | 68 |
| Density at t A | lb/ft³ | 62.32 |
| Kin. viscosity at t A | ft²/s | 1.082E-5 |

Pump

| | | | |
|-----------------------|------------|--------------|------|
| Pump name | 6IR40-125C | | |
| Size | 65/40/125 | | |
| Design | | | |
| Speed rpm | 3600 | No of stages | 1 |
| Impeller type | | | |
| Flow | Nominal | US g.p.m. | |
| | Max- | US g.p.m. | 154 |
| | Min- | US g.p.m. | 52.8 |
| Head | Nominal | ft | |
| | Max- | ft | 98.1 |
| | Min- | ft | 67.6 |
| Head H(Q=0) | ft | 98.1 | |
| NPSH 3% | ft | | |
| Max. working pressure | psi | 42.5 | |
| Shaft power | hp | | |
| Efficiency | % | | |
| Max absorbed power | hp | 4.0553 | |

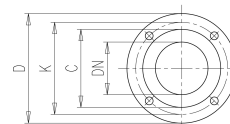
Materials Pump

| | | | |
|-----------------|-------------------------------------|--|--|
| Shaft | Stainless steel AISI 431 (1.4057) | | |
| Impeller | Cast iron EN-GJL-250 | | |
| Pump body | Cast iron EN-GJL-250 | | |
| Seal disc | Cast iron EN-GJL-250 | | |
| Gasket | Natural fiber | | |
| Mechanical seal | BVEG (Grafito/Ossido Allumina/EPDM) | | |
| | | | |
| | | | |
| | | | |
| | | | |
| | | | |
| | | | |
| | | | |
| | | | |

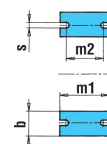
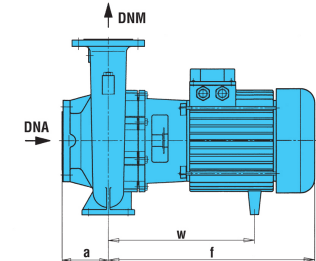
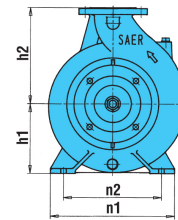
| | | | | |
|----------------------|------------------|------------------|----------------|-------|
| Motor | Frame size | 90 L | | |
| Manufacturer / Type | SAER MEC90L-2P-3 | | | |
| Rated power | hp | 4.0231 | Efficiency 4/4 | 83 % |
| Electric current | A | 10 A | Speed rpm | 3600 |
| Electric voltage | V | 230V | 1~ | Hz 60 |
| Starting mode | Unknown | | | |
| Degree of protection | IP 55 | Insulation class | F | |

Dimensions in inch

- a 3¹/₈
- b 1⁵/₁₆
- DNA 2⁹/₁₆
- DNM 1⁹/₁₆
- f 14⁵/₁₆
- h1 4⁷/₁₆
- h2 5¹/₂
- m1 3¹⁵/₁₆
- m2 2³/₄
- n1 8¹/₄
- n2 6⁵/₁₆
- s 9¹/₁₆
- w 10¹/₂



- C 3⁷/₁₆
- D 5⁷/₈
- DN 1⁹/₁₆
- K 4⁵/₁₆
- n° 3⁷/₁₆
- Øn 3¹/₄
- C 4¹³/₁₆
- D 7⁵/₁₆
- DN 2⁹/₁₆
- K 5¹/₁₆
- n° 3⁷/₁₆
- Øn 3¹/₄



Remarks:

| | | | | |
|---------|------------|------------|------------|-------------|
| Project | Project ID | Created by | Created on | Last update |
| | | | 2022-08-01 | |

Receiver

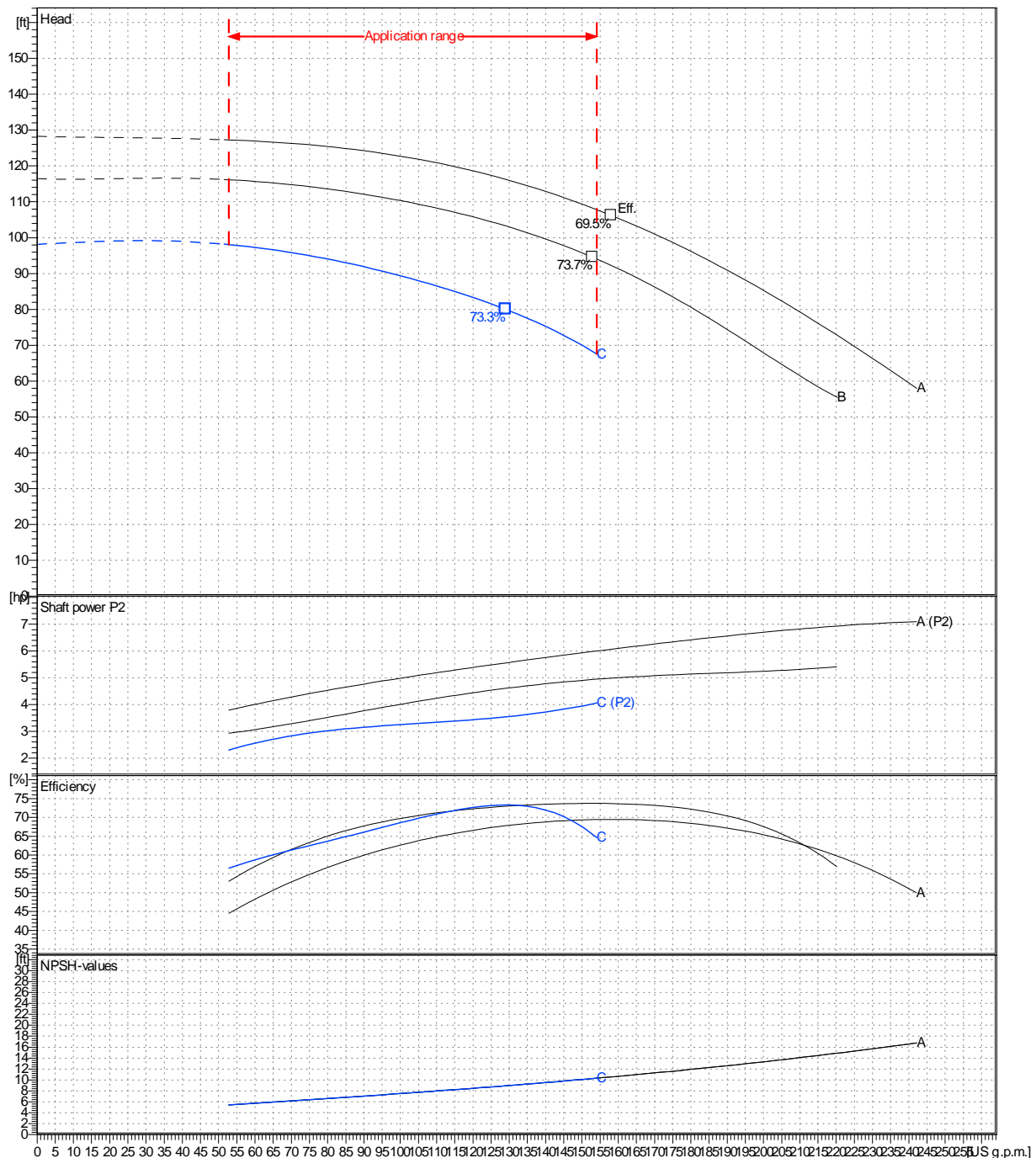
From

 Company name
 Respons. Department
 Person in charge
 Phone number
 Fax no
 E-mail address

| | | | | |
|------------------------------|-------------------------------|--------------------|--------------------------|------------------------------|
| Operating area | Flow | Head | Impeller type | |
| Operating data specification | 0 US g.p.m. | 0 ft | Impeller construction | Closed |
| Pump data | US g.p.m. | ft | Sense of rotation | Clockwise from the drive end |
| | | | Outlet width | DN 40 |
| | Flow | Head | Shaft power P2 | Speed rpm 3600 |
| | Min. Max. η Max. | H(Q=0) η Max. | P2(Q=0) Max. η Max. | Frequency Hz 60 Hz |
| | US g.p.m. US g.p.m. US g.p.m. | ft ft | hp hp hp | |
| | 52.8 154 129 | 98.1 80 | 4.06 3.54 | |

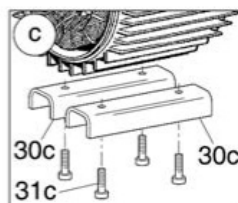
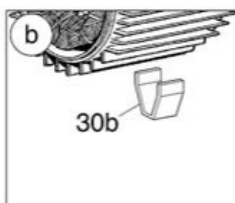
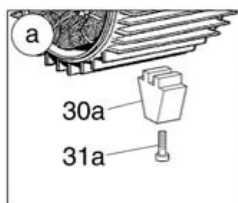
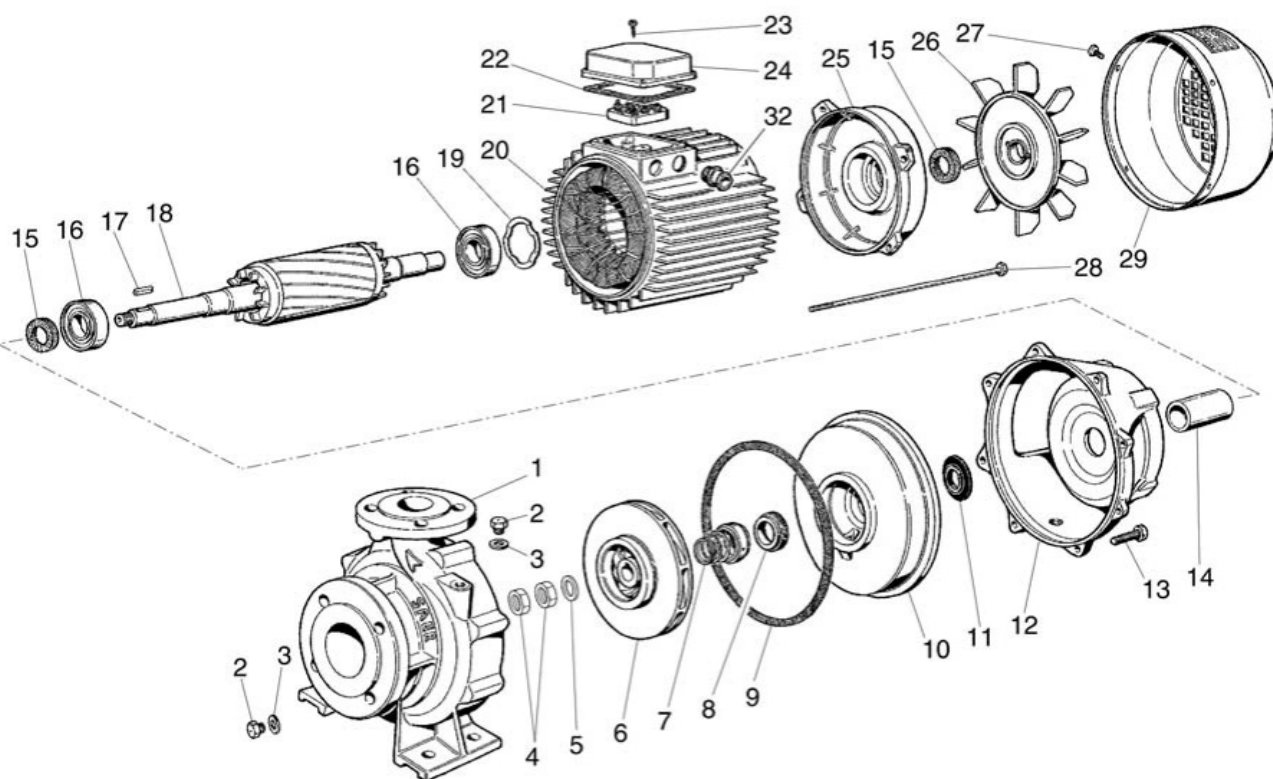
 Performance data based to: Water, pure [100%]; 68°F; 62.3lb/ft³; 1.08E-5ft²/s

UNI EN ISO 9906:2012 - Grade 3B



| | | | | |
|---------|------------|------------|------------|-------------|
| Project | Project ID | Created by | Created on | Last update |
| | | | 2022-08-01 | |

Company name
Respons. Department
Person in charge
Phone number
Fax no
E-mail address



Project

Project ID

Created by

Created on
2022-08-01

Last update