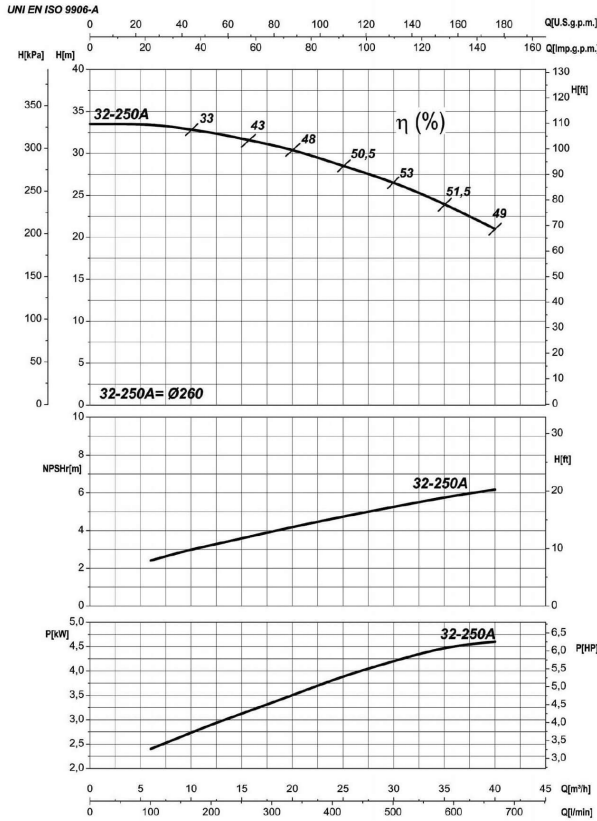


Receiver

From

 Company name
 Respons. Department
 Person in charge
 Phone number
 Fax no
 E-mail address



Operating data specification

Nominal flow	US g.p.m. 0
Nominal head	ft 0
Static head	ft 0
NPSH - v value of plant	ft 0
Inlet pressure	psi 1.42
Fluid	Water, pure
Operating temperature t A	°F 68
Density at t A	lb/ft³ 62.32
Kin. viscosity at t A	ft²/s 1.082E-5

Pump

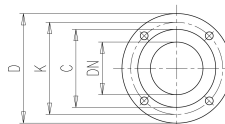
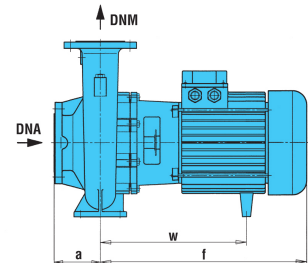
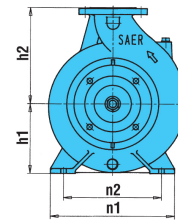
Pump name	6IR4P 32-250A		
Size	50/32/250		
Design			
Speed rpm	1800	No of stages	1
Impeller type			
Flow	Nominal	US g.p.m.	
	Max-	US g.p.m.	176
	Min-	US g.p.m.	26.4
Head	Nominal	ft	
	Max-	ft	110
	Min-	ft	69
Head H(Q=0)	ft	110	
NPSH 3%	ft		
Max. working pressure	psi	47.7	
Shaft power	hp		
Efficiency	%		
Max absorbed power	hp	6.1563	

Materials Pump

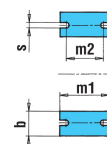
Shaft	Stainless steel AISI 431 (1.4057)
Impeller	Cast iron EN-GJL-250
Pump body	Cast iron EN-GJL-250
Seal disc	Cast iron EN-GJL-250
Gasket	Natural fiber
Mechanical seal	BVEG (Grafito/Ossido Allumina/EPDM)

Dimensions in inch

a	3 ¹⁵ / ₁₆
b	2 ⁹ / ₁₆
DNA	1 ¹⁵ / ₁₆
DNM	1 ¹ / ₄
h1	7 ¹ / ₁₆
h2	8 ⁷ / ₈
m1	4 ¹⁵ / ₁₆
m2	3 ³ / ₄
n1	12 ⁵ / ₈
n2	9 ¹³ / ₁₆
s	9 ¹ / ₁₆
w	12 ⁹ / ₁₆



C	3 ¹ / ₁₆	C	4
D	5 ¹ / ₂	D	6 ¹ / ₂
DN	1 ¹ / ₄	DN	1 ¹⁵ / ₁₆
K	3 ¹⁵ / ₁₆	K	4 ¹⁵ / ₁₆
n°	3 ¹ / ₁₆	n°	3 ¹ / ₁₆
ø n	3 ¹ / ₄	ø n	3 ¹ / ₄



Motor	Frame size	132 S		
Manufacturer / Type	SAER	MEC132S-4P-5.5		
Rated power	hp	7.3756	Efficiency 4/4	84 %
Electric current	A	18.4 A	Speed rpm	1800
Electric voltage	V	230V	3~	Hz 60
Starting mode	Unknown			
Degree of protection	IP 55	Insulation class	F	

Remarks:

Project	Project ID	Created by	Created on	Last update
			2022-08-01	

Receiver

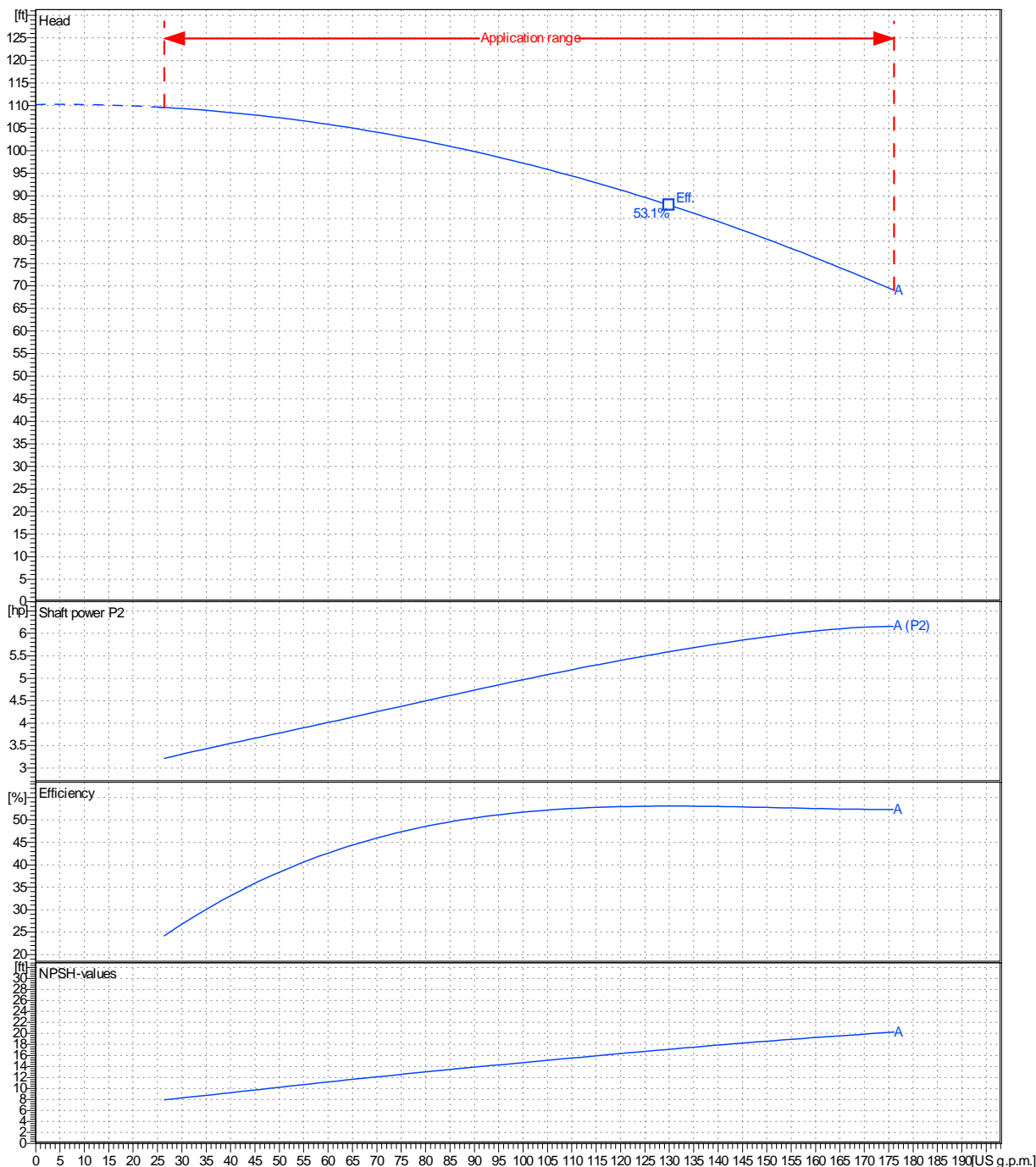
From

 Company name
 Respons. Department
 Person in charge
 Phone number
 Fax no
 E-mail address

Operating area	Flow	Head	Impeller type
Operating data specification	0 US g.p.m.	0 ft	Impeller construction Closed
Pump data	US g.p.m.		Sense of rotation Clockwise from the drive end
	ft		Outlet width DN 32
	Flow		Speed
	Min.	Max.	rpm
	US g.p.m.	US g.p.m.	1800
	Head		Frequency
	H(Q=0)	η Max.	Hz
	ft	ft	60 Hz
			Shaft power P2
			rpm
			1800
			Hz
			60 Hz

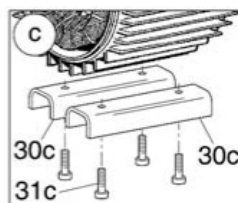
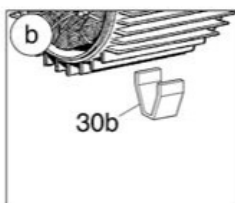
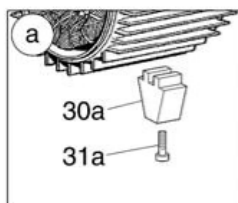
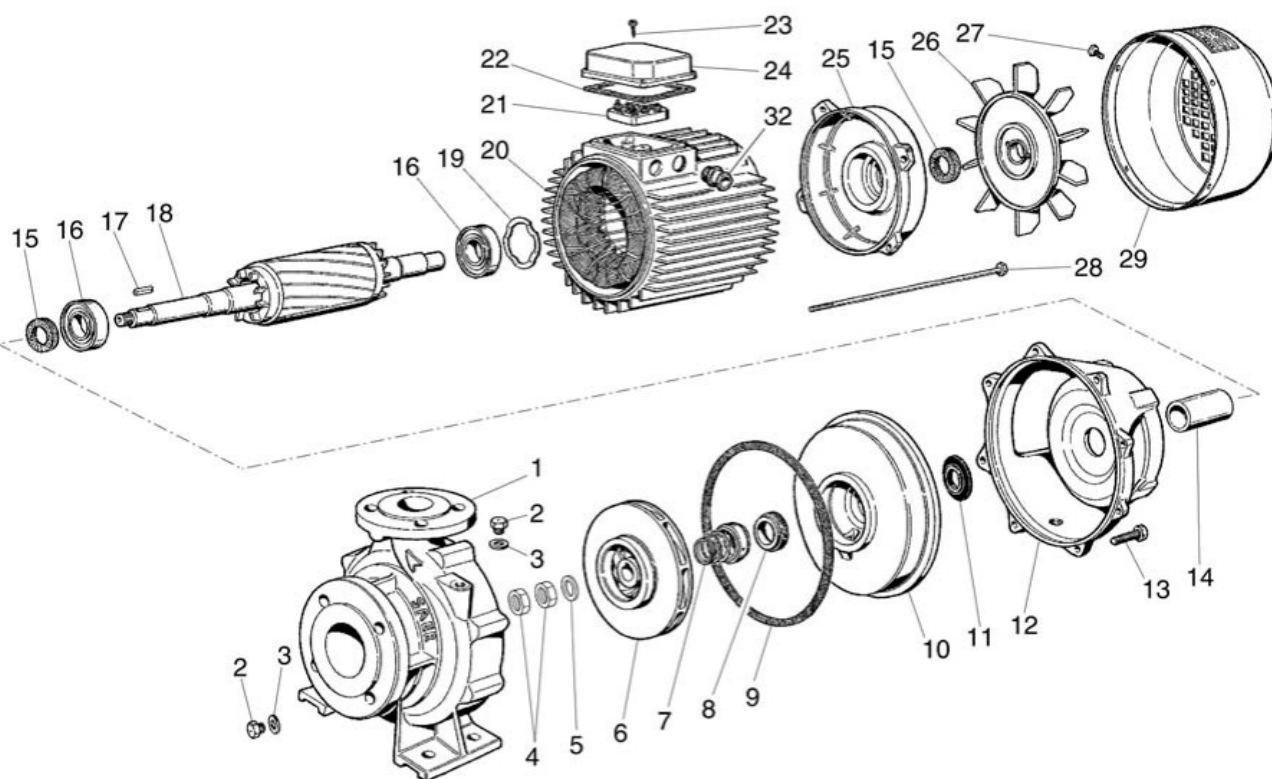
 Performance data based to: Water, pure [100%]; 68°F; 62.3lb/ft³; 1.08E-5ft²/s

UNI EN ISO 9906:2012 - Grade 3B



Project	Project ID	Created by	Created on	Last update
			2022-08-01	

Company name
Respons. Department
Person in charge
Phone number
Fax no
E-mail address



Project

Project ID

Created by

Created on
2022-08-01

Last update