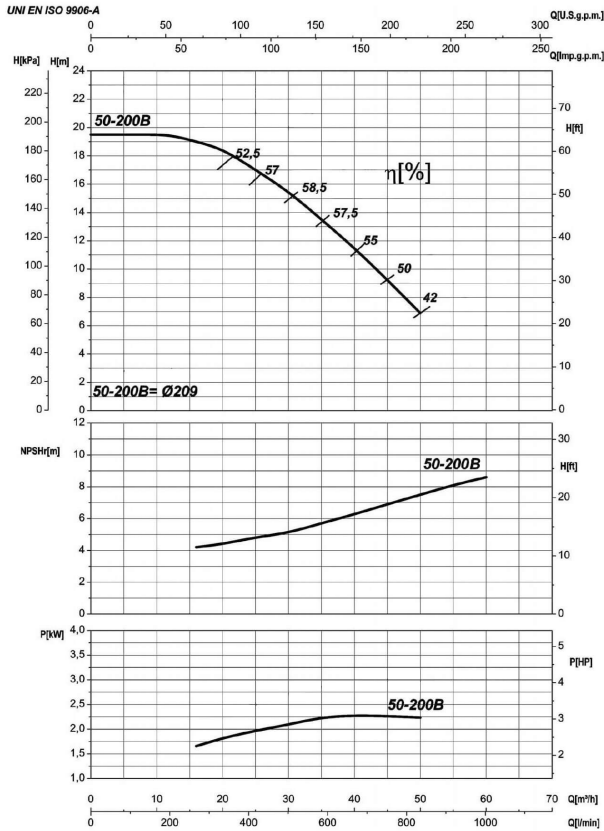


Receiver

From

 Company name  
 Respons. Department  
 Person in charge  
 Phone number  
 Fax no  
 E-mail address


### Operating data specification

Nominal flow	US g.p.m. 0
Nominal head	ft 0
Static head	ft 0
NPSH - v value of plant	ft 0
Inlet pressure	psi 1.42
Fluid	Water, pure
Operating temperature t A	°F 68
Density at t A	lb/ft³ 62.32
Kin. viscosity at t A	ft²/s 1.082E-5

### Pump

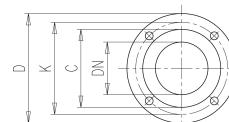
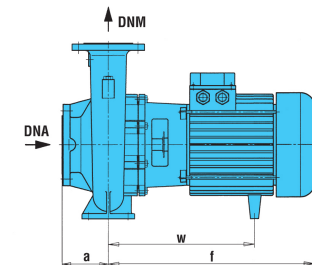
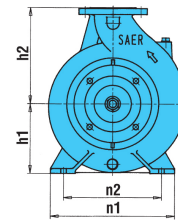
Pump name	6IR4P 50-200B		
Size	65/50/200		
Design			
Speed rpm	1800	No of stages	1
Impeller type			
Flow	Nominal	US g.p.m.	
	Max-	US g.p.m.	220
	Min-	US g.p.m.	70.4
Head	Nominal	ft	
	Max-	ft	62.2
	Min-	ft	23
Head H(Q=0)		ft	63.9
NPSH 3%		ft	
Max. working pressure		psi	27.7
Shaft power		hp	
Efficiency		%	
Max absorbed power		hp	3.0921

### Materials Pump

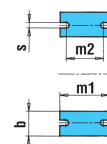
Shaft	Stainless steel AISI 431 (1.4057)
Impeller	Cast iron EN-GJL-250
Pump body	Cast iron EN-GJL-250
Seal disc	Cast iron EN-GJL-250
Gasket	Natural fiber
Mechanical seal	BVEG (Grafito/Ossido Allumina/EPDM)

### Dimensions in inch

a	4
b	1 <sup>15</sup> / <sub>16</sub>
DNA	2 <sup>9</sup> / <sub>16</sub>
DNM	1 <sup>15</sup> / <sub>16</sub>
f	15 <sup>5</sup> / <sub>8</sub>
h1	6 <sup>3</sup> / <sub>8</sub>
h2	7 <sup>15</sup> / <sub>16</sub>
m1	3 <sup>15</sup> / <sub>16</sub>
m2	2 <sup>3</sup> / <sub>4</sub>
n1	10 <sup>7</sup> / <sub>16</sub>
n2	8 <sup>3</sup> / <sub>8</sub>
s	9 <sup>1</sup> / <sub>16</sub>
w	10 <sup>7</sup> / <sub>8</sub>



C	4	C	4 <sup>13</sup> / <sub>16</sub>
D	6 <sup>1</sup> / <sub>2</sub>	D	7 <sup>5</sup> / <sub>16</sub>
DN	1 <sup>15</sup> / <sub>16</sub>	DN	2 <sup>9</sup> / <sub>16</sub>
K	4 <sup>15</sup> / <sub>16</sub>	K	5 <sup>1</sup> / <sub>16</sub>
n°	3 <sup>1</sup> / <sub>16</sub>	n°	3 <sup>1</sup> / <sub>16</sub>
ø n	3 <sup>1</sup> / <sub>4</sub>	ø n	3 <sup>1</sup> / <sub>4</sub>



<b>Motor</b>	Frame size	100 L		
Manufacturer / Type	SAER	MEC100L-4P-2.2		
Rated power	hp	2.9502	Efficiency 4/4	81 %
Electric current	A	9.4 A	Speed rpm	1800
Electric voltage	V	230V	3~	Hz 60
Starting mode	Unknown			
Degree of protection	IP 55	Insulation class	F	

Remarks:

Project	Project ID	Created by	Created on	Last update
			2022-08-01	

Receiver

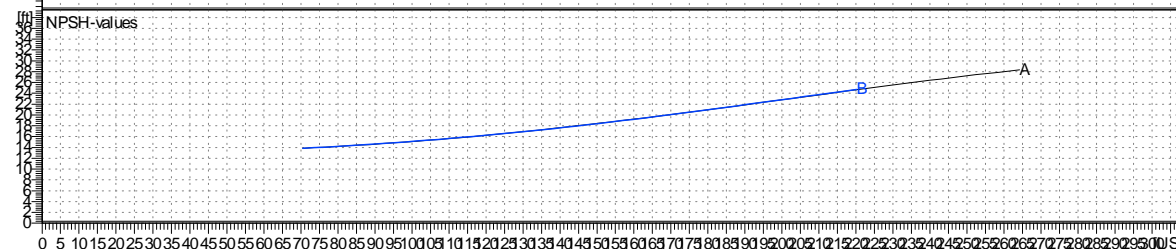
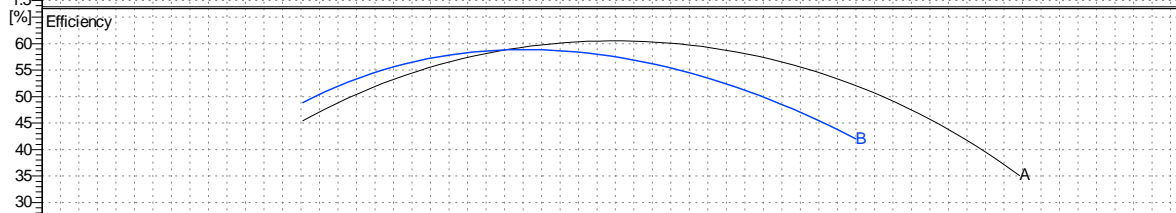
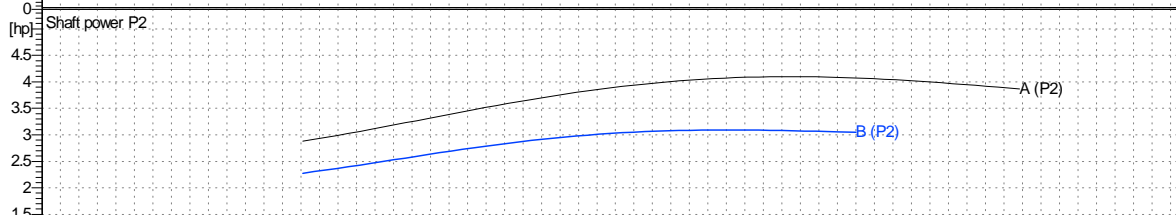
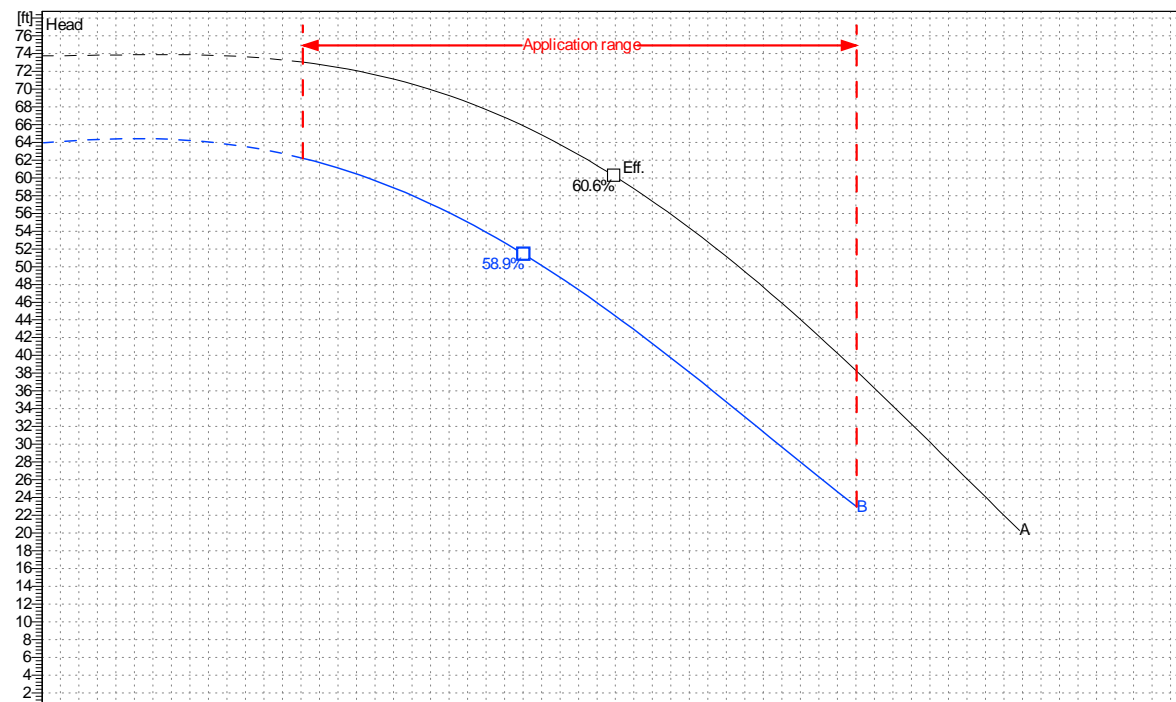
From

 Company name  
 Respons. Department  
 Person in charge  
 Phone number  
 Fax no  
 E-mail address

Operating area	Flow	Head	Impeller type
Operating data specification	0 US g.p.m.	0 ft	Impeller construction Closed
Pump data	US g.p.m.		Sense of rotation Clockwise from the drive end
	ft		Outlet width DN 50
	Flow		Speed
	Min.	Max.	rpm
	70.4	220	1800
	Head		Frequency
	H(Q=0)	$\eta$ Max.	Hz
	63.9	51.4	60 Hz
	Shaft power P2		
	P2(Q=0)	Max.	
	hp	3.09	

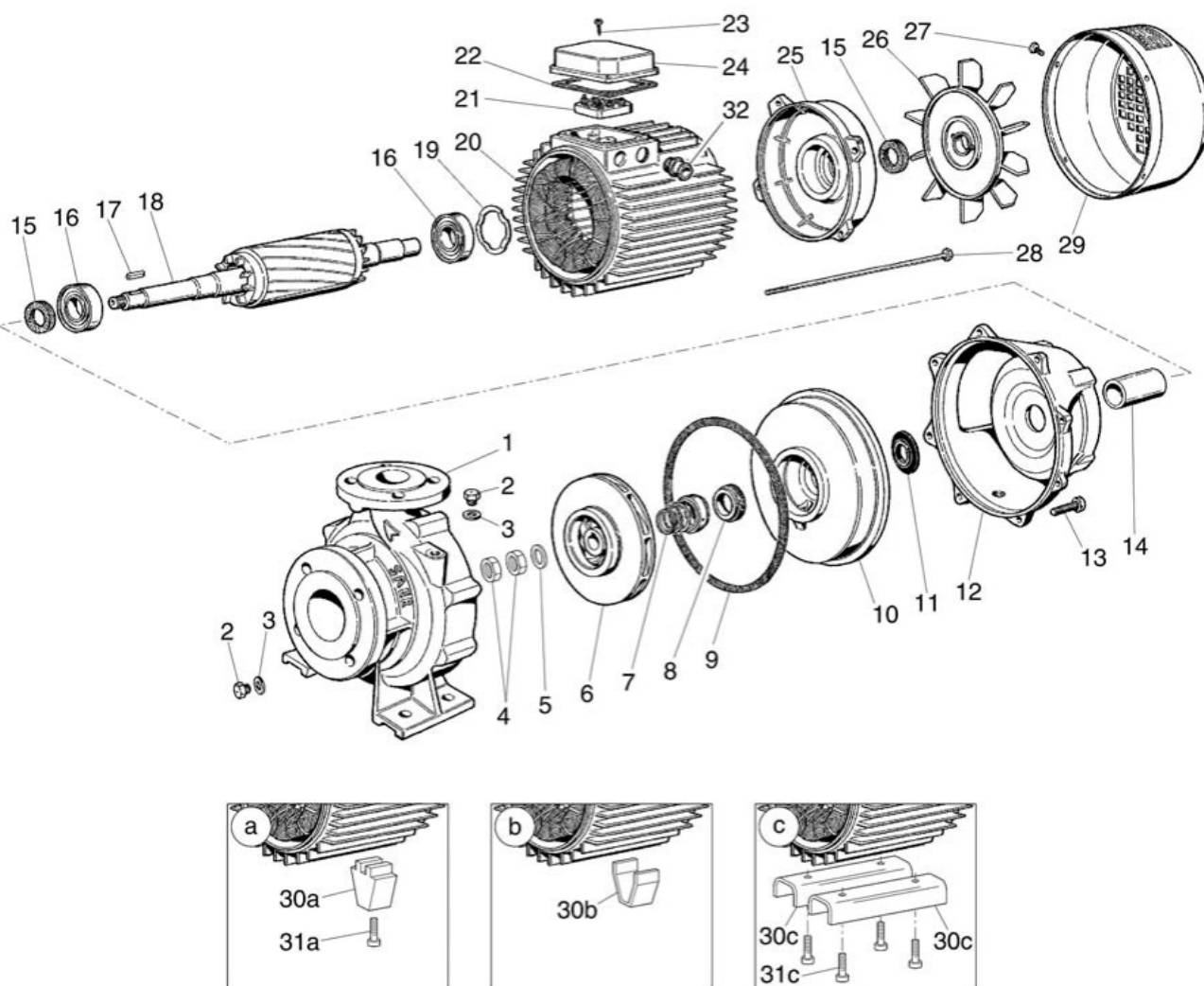
 Performance data based to: Water, pure [100%]; 68°F; 62.3lb/ft<sup>3</sup>; 1.08E-5ft<sup>2</sup>/s

UNI EN ISO 9906:2012 - Grade 3B



Project	Project ID	Created by	Created on	Last update
			<b>2022-08-01</b>	

Company name  
Respons. Department  
Person in charge  
Phone number  
Fax no  
E-mail address

Project

Project ID

Created by

Created on  
**2022-08-01**

Last update