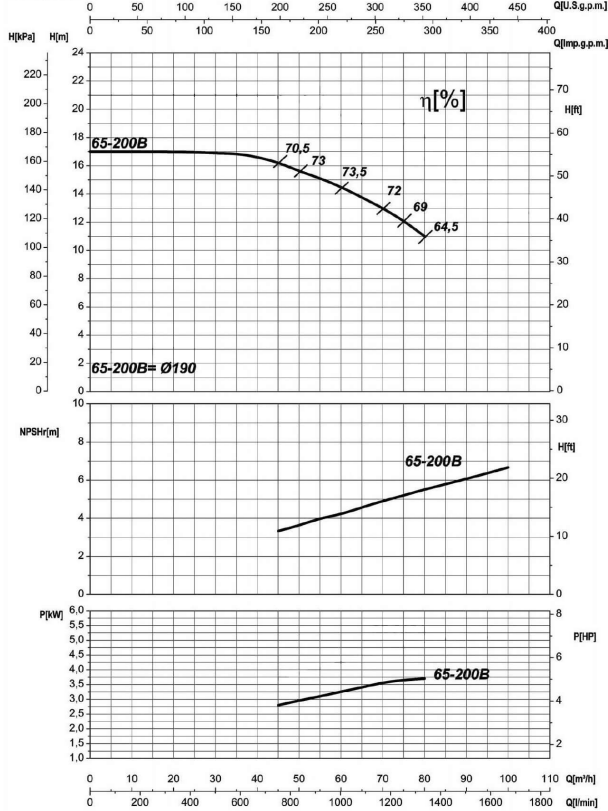


Receiver

From

 Company name
 Respons. Department
 Person in charge
 Phone number
 Fax no
 E-mail address

UNI EN ISO 9906-A



Operating data specification

Nominal flow	US g.p.m. 0
Nominal head	ft 0
Static head	ft 0
NPSH - v value of plant	ft 0
Inlet pressure	psi 1.42
Fluid	Water, pure
Operating temperature t A	°F 68
Density at t A	lb/ft³ 62.32
Kin. viscosity at t A	ft²/s 1.082E-5

Pump

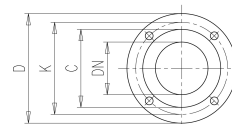
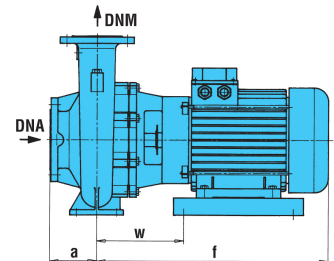
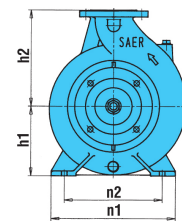
Pump name		6IR4P 65-200B	
Size		80/65/200	
Design			
Speed rpm	1800	No of stages	1
Impeller type			
Flow	Nominal	US g.p.m.	
	Max-	US g.p.m.	352
	Min-	US g.p.m.	198
Head	Nominal	ft	
	Max-	ft	52.8
	Min-	ft	36.2
Head H(Q=0)		ft	55.2
NPSH 3%		ft	
Max. working pressure		psi	23.9
Shaft power		hp	
Efficiency		%	
Max absorbed power		hp	4.9753

Materials Pump

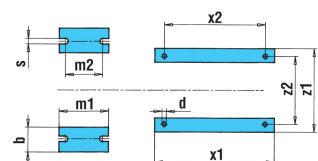
Shaft	Stainless steel AISI 431 (1.4057)
Impeller	Cast iron EN-GJL-250
Pump body	Cast iron EN-GJL-250
Seal disc	Cast iron EN-GJL-250
Gasket	Natural fiber
Mechanical seal	BVEG (Grafito/Ossido Allumina/EPDM)

Dimensions in inch

a	3 ¹⁵ / ₁₆
b	2 ⁹ / ₁₆
DNA	3 ⁷ / ₈
DNM	2 ⁹ / ₁₆
f	16 ⁵ / ₈
h1	7 ¹ / ₁₆
h2	8 ⁷ / ₈
m1	4 ¹⁵ / ₁₆
m2	3 ³ / ₄
n1	12 ⁵ / ₈
n2	9 ¹³ / ₁₆
s	9 ¹ / ₁₆
w	11 ³ / ₄



C	4 ¹³ / ₁₆	C	5 ⁷ / ₁₆
D	7 ⁵ / ₁₆	D	7 ⁷ / ₈
DN	2 ⁹ / ₁₆	DN	3 ⁷ / ₈
K	5 ¹¹ / ₁₆	K	6 ⁵ / ₁₆
n°	3 ¹ / ₁₆	n°	3 ¹ / ₁₆
ø n	3 ¹ / ₄	ø n	3 ¹ / ₄



Motor	Frame size	112 M		
Manufacturer / Type	SAER	MEC112M-4P-4		
Rated power	hp	5.3641	Efficiency 4/4	85 %
Electric current	A	14.4 A	Speed rpm	1800
Electric voltage	V	230V	3~	Hz 60
Starting mode	Unknown			
Degree of protection	IP 55	Insulation class	F	

Remarks:

Project	Project ID	Created by	Created on	Last update
			2022-08-01	

Receiver

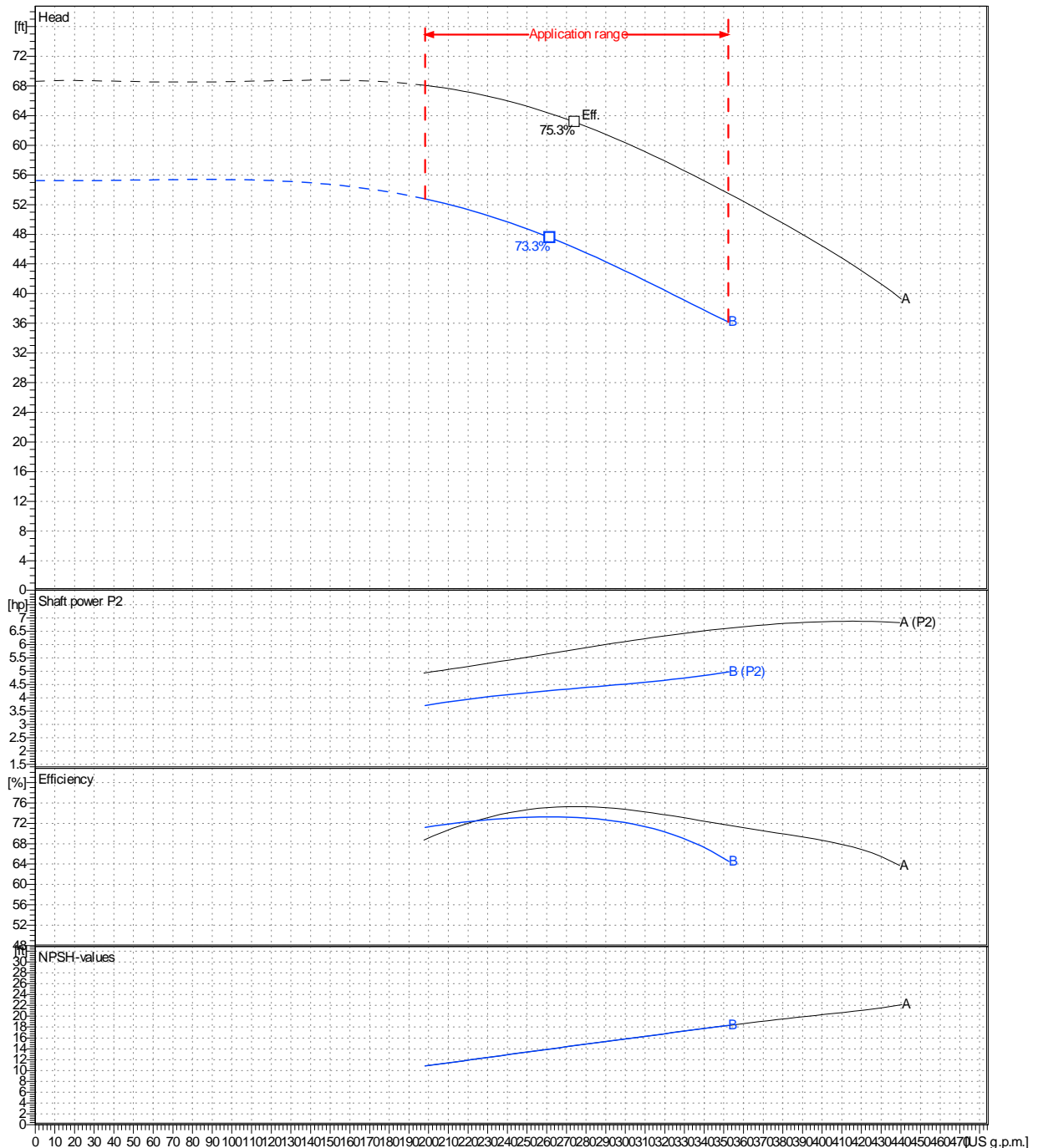
From

 Company name
 Respons. Department
 Person in charge
 Phone number
 Fax no
 E-mail address

Operating area	Flow	Head	Impeller type	
Operating data specification	0 US g.p.m.	0 ft	Impeller construction	Closed
Pump data	US g.p.m.		Sense of rotation	Clockwise from the drive end
	ft		Outlet width	DN 65
	Flow		Speed	rpm 1800
	Min.	Max.	Frequency	Hz 60 Hz
	US g.p.m.	US g.p.m.		
	198	352		
	Head		Shaft power P2	
	H(Q=0)	η Max.	P2(Q=0)	Max.
	ft	ft	hp	hp
	55.2	47.5	4.98	4.27

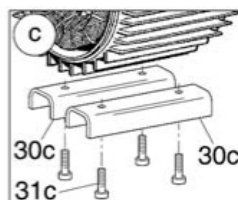
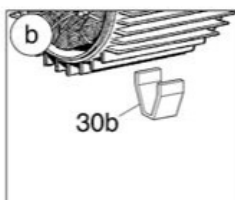
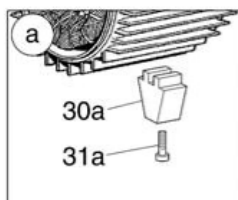
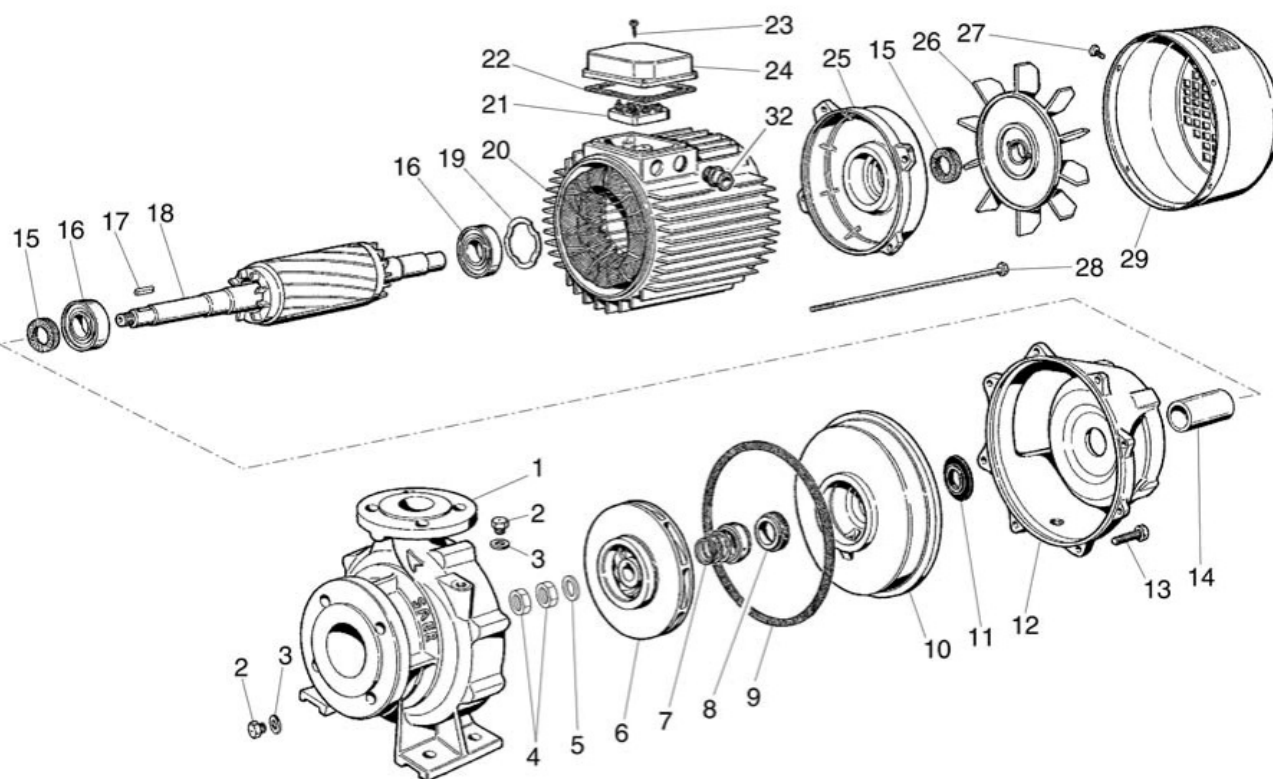
 Performance data based to: Water, pure [100%]; 68°F; 62.3lb/ft³; 1.08E-5ft²/s

UNI EN ISO 9906:2012 - Grade 3B



Project	Project ID	Created by	Created on	Last update
			2022-08-01	

Company name
Respons. Department
Person in charge
Phone number
Fax no
E-mail address



Project

Project ID

Created by

Created on
2022-08-01

Last update