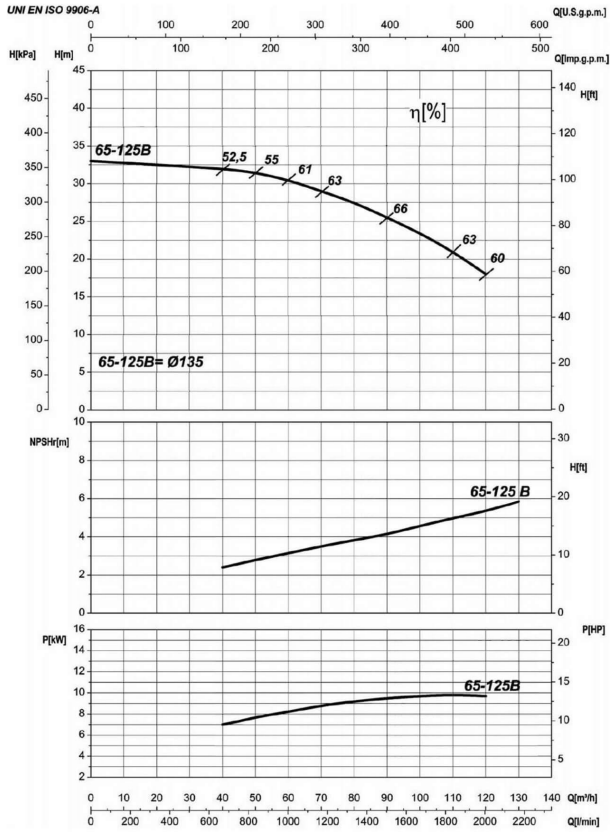


Company name
 Respons. Department
 Person in charge
 Phone number
 Fax no
 E-mail address

Receiver	From



Operating data specification

Nominal flow	US g.p.m. 0
Nominal head	ft 0
Static head	ft 0
NPSH - v value of plant	ft 0
Inlet pressure	psi 1.42
Fluid	Water, pure
Operating temperature t A	°F 68
Density at t A	lb/ft³ 62.32
Kin. viscosity at t A	ft²/s 1.082E-5

Pump

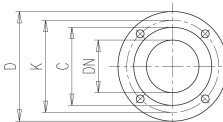
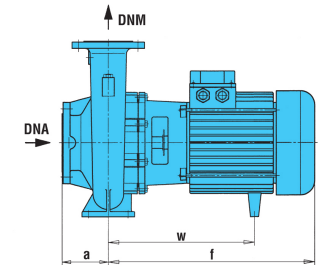
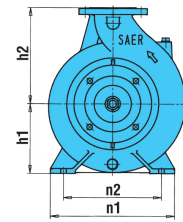
Pump name		6IR65-125B	
Size		80/65/125	
Design			
Speed	rpm 3600	No of stages	1
Impeller type			
Flow	Nominal	US g.p.m.	
	Max-	US g.p.m. 529	
	Min-	US g.p.m. 176	
Head	Nominal	ft	
	Max-	ft 106	
	Min-	ft 60.5	
Head H(Q=0)		ft 109	
NPSH 3%		ft	
Max. working pressure		psi 47.1	
Shaft power		hp	
Efficiency		%	
Max absorbed power		hp 13.341	

Materials Pump

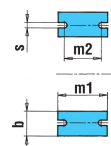
Shaft	Stainless steel AISI 431 (1.4057)		
Impeller	Cast iron EN-GJL-250		
Pump body	Cast iron EN-GJL-250		
Seal disc	Cast iron EN-GJL-250		
Gasket	Natural fiber		
Mechanical seal	BVEG (Grafito/Ossido Allumina/EPDM)		

Dimensions in inch

- a 3¹⁵/₁₆ z1 10³/₁₆
- b 2⁹/₁₆ z2 8¹/₂
- d 1/2
- DNA 3¹/₈
- DNM 2⁹/₁₆
- f 19¹/₈
- h1 6⁵/₁₆
- h2 7¹/₁₆
- m1 4¹⁵/₁₆
- m2 3³/₄
- n1 11
- n2 8³/₈
- s 9⁹/₁₆
- w 4¹⁹/₁₆
- x1 12⁵/₈
- x2 11



- C 4¹³/₁₆ C 5⁷/₁₆
- D 7⁵/₁₆ D 7⁷/₁₆
- DN 2⁹/₁₆ DN 3¹/₈
- K 5¹¹/₁₆ K 6⁷/₁₆
- n° 3³/₁₆ n° 3³/₁₆
- Øn 3³/₄ Øn 3³/₄



Motor		Frame size	132 S	
Manufacturer / Type		SAER	MEC132S-2P-11	
Rated power	hp	14.751	Efficiency 4/4	87.5 %
Electric current	A	40 A	Speed	rpm 3600
Electric voltage	V	230V	3~	Hz 60
Starting mode		Unknown		
Degree of protection		IP 55	Insulation class	F

Remarks:

Project	Project ID	Created by	Created on	Last update
			2022-08-01	

Receiver

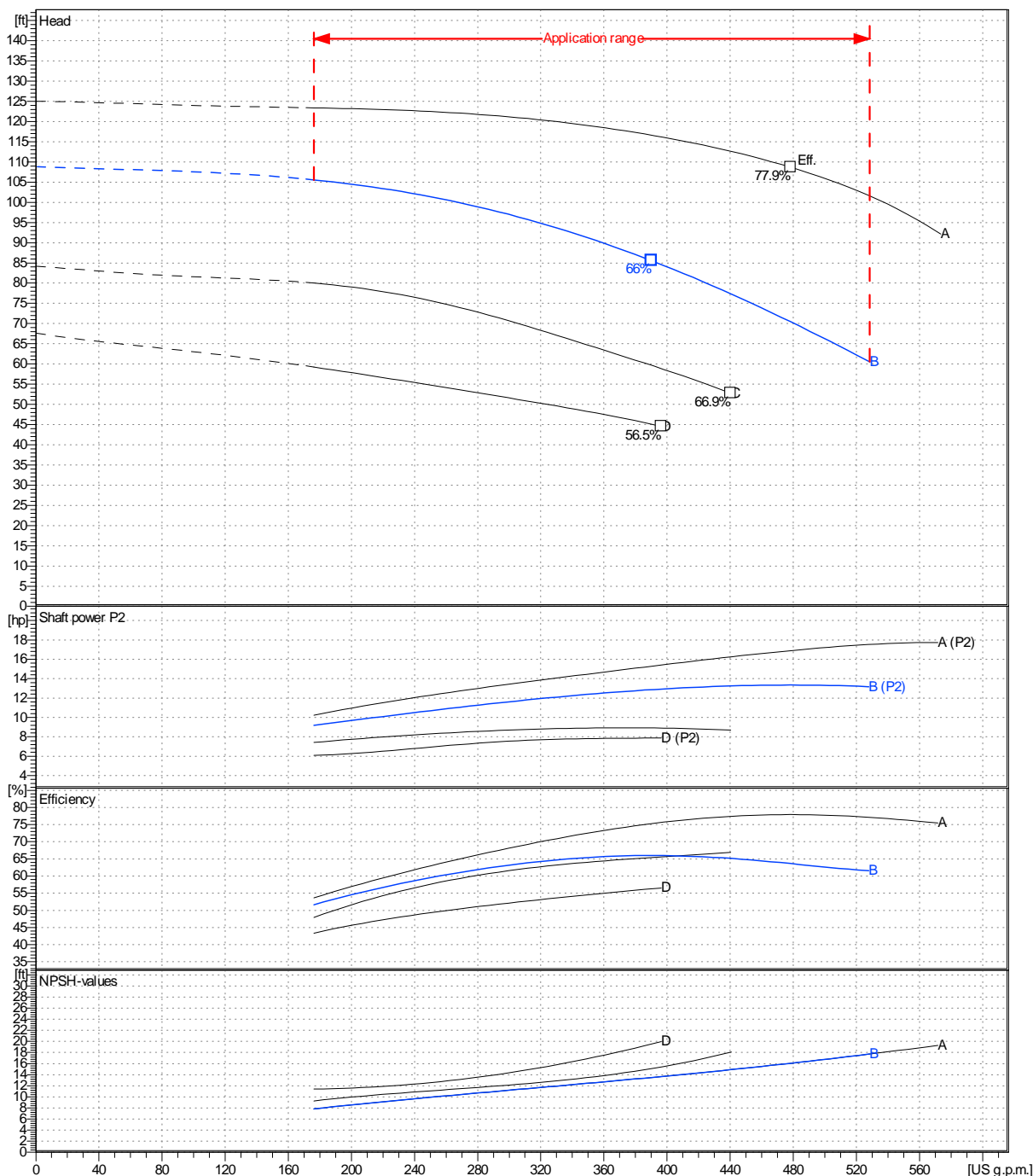
From

 Company name
 Respons. Department
 Person in charge
 Phone number
 Fax no
 E-mail address

Operating area	Flow	Head	Impeller type
Operating data specification	0 US g.p.m.	0 ft	Closed
Pump data	US g.p.m.		Sense of rotation
	ft		Clockwise from the drive end
	Speed		rpm
	Frequency		Hz
			3600 60 Hz

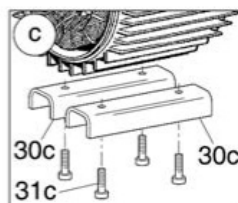
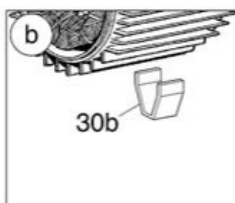
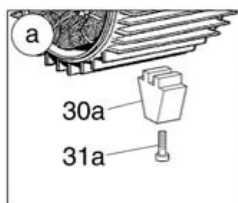
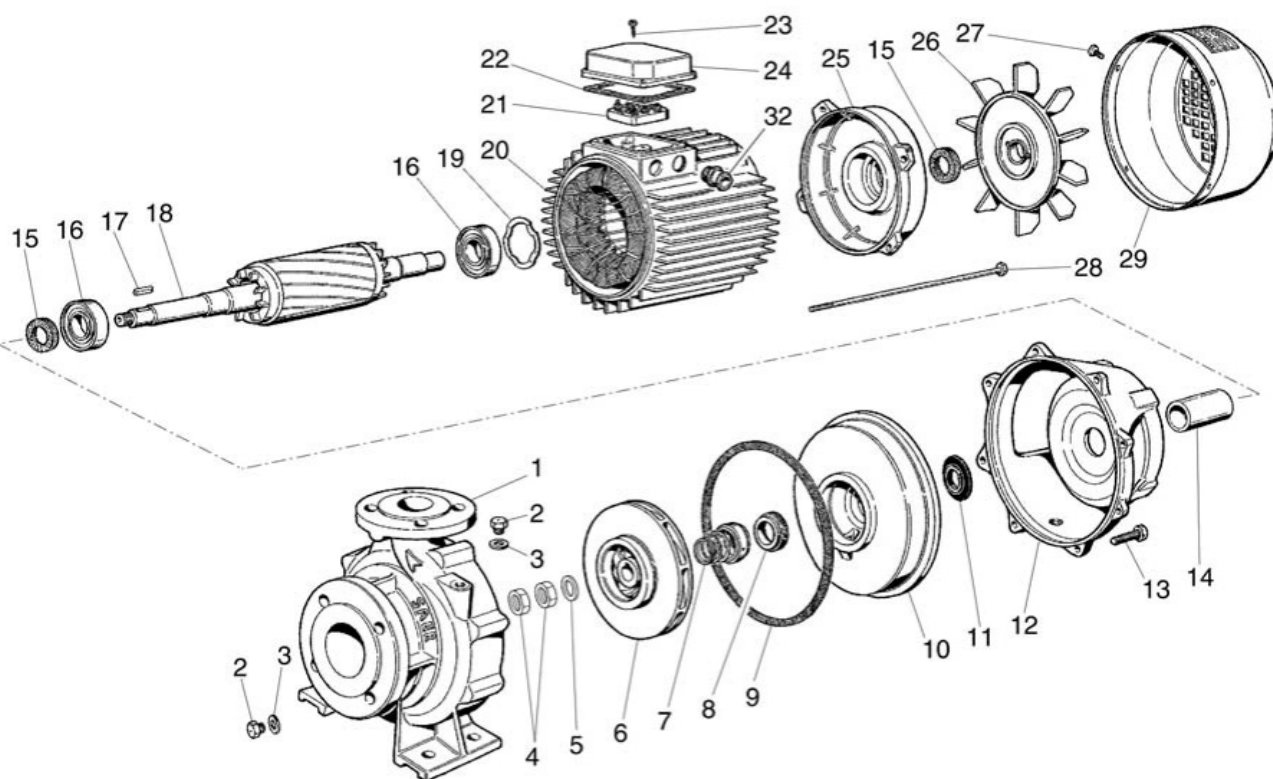
 Performance data based to: Water, pure [100%]; 68°F; 62.3lb/ft³; 1.08E-5ft²/s

UNI EN ISO 9906:2012 - Grade 3B



Project	Project ID	Created by	Created on	Last update
			2022-08-01	

Company name
Respons. Department
Person in charge
Phone number
Fax no
E-mail address



Project

Project ID

Created by

Created on
2022-08-01

Last update