

ZOELLER[®]
PUMP COMPANY



Package Systems, Controls, and Accessories

Package Systems

Check Valves

Float Switches

Alarm Systems

Control Panels

Rail Systems



Trusted. Tested. Tough.[®]

WHAT SETS ZOELLER SYSTEMS APART?

Since 1939, Zoeller Company has been manufacturing water pumps of many types. From pedestal pumps in the beginning to large HP submersible, non-clog pumps in recent years, we have gained invaluable manufacturing experience from our humble beginning in August Zoeller's basement workshop.

Over the years, one of our most important mottos has been, 'We excel at 1,000 little things'. From start to finish, we take pride in our products. When you have residential or commercial wastewater issues, you can count on Zoeller to deliver the very best solutions. Our commitment to unsurpassed quality offers years of service and durability with a responsive and knowledgeable product support team just a phone call away.

- **SUPPORTING THE WHOLE PACKAGE...**

In pumping systems, the "whole package" encompasses far more than just high quality pumps. The control, alarm, valves, disconnects, piping and container are all important components of a complete system. Zoeller understands that an installation is only as good as the weakest element, so we have gone to great lengths to provide accessory items that are as reliable as our legendary pumps. While we manufacture most of our products from start to finish, including check valves and rail systems, we recognize that producing certain specialized accessories requires a different skill set than our roots provide. In order to offer you the best components for your project, we have partnered with other specialized manufacturers, all of them leaders in their respective fields. You can be assured that the vein of Zoeller quality runs top to bottom throughout our entire product offering.

- **QUALITY CONTROL AT ALL LEVELS...**

You may have heard that all of Zoeller's submersible pumps are 100% factory tested underwater prior to shipment. However, you may not be aware that before any new product is judged fit to carry a Zoeller label, we first subject it to a barrage of durability and performance tests. We pressurize check valves until they burst, cycle float switches until they give out, and crush basins until they collapse. These over-the-top abuses have very practical goals. They ensure that our products will withstand the rigors of your real world applications. We follow this testing with inspections of all materials that come through our doors in order to ensure the highest level of quality and consistency. At Zoeller, we realize that your projects are our projects and that your successes are our successes.

- **FULL BREADTH OF PRODUCT LINE...**

Zoeller is your 'one stop shop' when dealing with dewatering and wastewater systems. We offer everything from a small fractional sump pump to a large, 100 HP non-clog pump. From battery back-ups, check valves, sewage grinder systems, small prepackaged residential units or large prepackaged municipal systems, Zoeller can offer it all. Next time you are looking for a water or wastewater system, reach for the only catalog you will ever need... Zoeller Company!



900 Series

Preassembled Sump Pump Systems

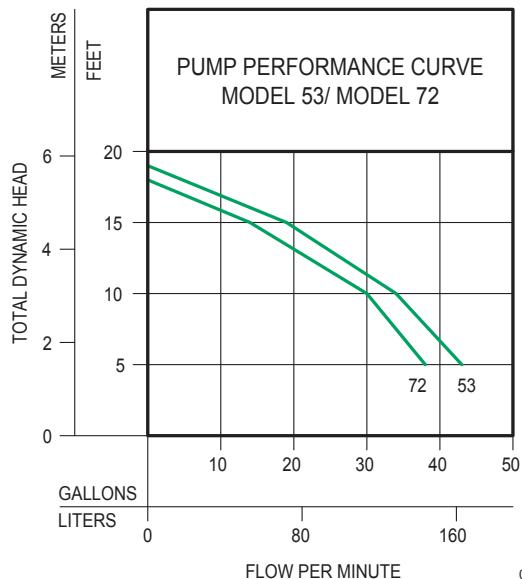
SPECIFICATIONS:

- No assembly required! Drop it in the hole and go!
- Pump switch is installed 180° from inlet
- Discharge pipe is plumbed with a predrilled 3/16" (5 mm) vent hole.
- Electrical cord seal is installed in cover
- Cover is sealed and bolted down
- Basin is filled with environmentally-safe peanuts for safe transit. Just add water and they dissolve!
- Automatic cast iron or thermoplastic pump with tank and all hardware
- 18" x 22" (45.7 x 55.9 cm) basin with 4" inlet
- Deluxe unit has a radon-approved basin and cover for radon prevention
- Standard and economy models use a polyethylene basin and cover
- Standard and economy covers have a 2" vent, 1-1/2" discharge
- Deluxe cover has a 3" vent, 1-1/2" discharge
- Fast, easy and job ready!



See FM2124 for further information.

SUMP PUMP SERIES	MODEL PUMP WITH BASIN	SYSTEM TYPE	WEIGHT (lbs/kg)
900-0001	M53	DELUXE	48 lbs/21.8 kg
900-0002	M53	STANDARD	53 lbs/24.0 kg
900-0003	M72	ECONOMY	44 lbs/20.0 kg



015887A

910 Systems

Unassembled Simplex and Duplex Sewage Package Systems

Ideal for homes, farms, trailer courts, motels, restaurants and institutions where drain facilities are below existing sewer lines. Maximum temperature rated at 130 °F (54 °C).



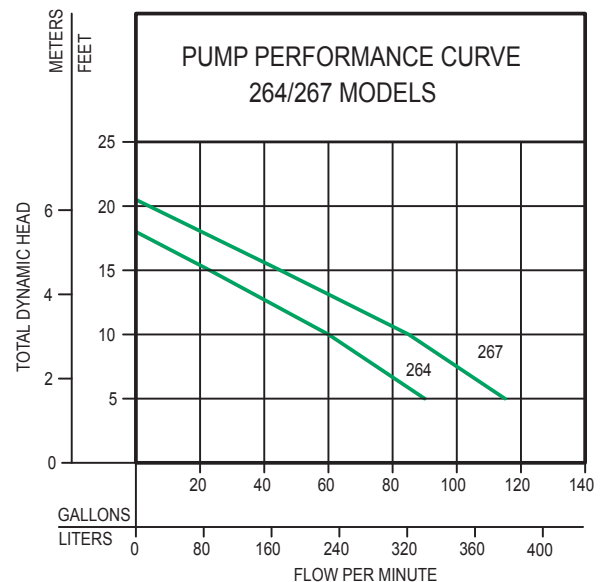
Duplex System for Indoor Sewage Applications (unassembled)

INCLUDES:

- (2) automatic pumps (M264 or M267)
- (1) 10-0804 SmartPak® residential alternator with alarm
- (1) 31-1105 30" x 36" (76.2 x 91.4 cm) poly-foam basin with 2" vent/discharge
- (2) 30-0101 Tri-Check® valves



See FM0454 for further information.



009969A

912 Systems

Simplex Sewage Package Systems (job ready/assembled)

SPECIFICATIONS:

- More choices, easier installation and fast delivery
- Saves labor and reduces installation errors
- 2" (50 mm) solids-handling pump
- 2" PVC discharge pipe, 30" (76 cm) long on 18" x 30" (46 x 76 cm), 24" (61 cm) long on 24" x 24" (61 x 61 cm) and 36" (91 cm) long on 24" x 36" (61 x 91 cm)
- Basins - polyethylene, poly-foam or fiberglass construction with poly or solid steel covers and 4" pipe seal hub, 4" PVC hub (deluxe) or 4" cast iron hub on L.A. Code Systems
- Check valve options - 30-0151, 30-0020, 30-0021, 30-0101 or 30-0103 (not included)
- Systems available with alarms and preinstalled alarm float.
- Premium indoor systems have a split cover for easy pump inspection, torque stops and an anti-flotation device
- Side discharge systems rated for outdoor burial: solid polyethylene structural foam lid and basin with 2" discharge on side
- 3/16" (5 mm) vent hole drilled

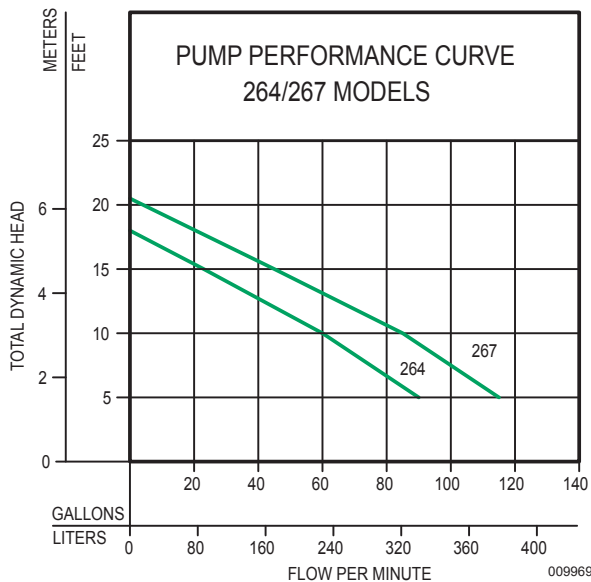
See FM2164 for further information.



912-0007 shown

24" X 24" Simplex Sewage System

See FM2810 for further information.



912-1161 shown

915 Grinder Package Systems

1/2, 3/4, 1 HP Grinder Packages

The fractional HP grinder pumps are now available in package systems. This job-ready (non-suspended) system uses our innovative, stainless steel Tri-Slice® cutter, which requires little or no maintenance. The hardened stainless steel cutter is ideal for handling difficult solids such as wipes, rags, towels, etc. that can jam traditional style ejector pumps.



APPLICATIONS:

- Residential wastewater
- Light commercial

SPECIFICATIONS:

- 1-1/4" top discharge
- 803 - 1/2 HP, 805 - 3/4 HP, 807 - 1 HP
- Cast iron construction
- Oil filled for optimal heat dissipation
- Available in 18" x 30" (46 x 76 cm) polystructural foam or 24" x 24" (61 x 61 cm) poly basin. Consult factory for additional options.
- Thermally-protected motor



Cutter Blade

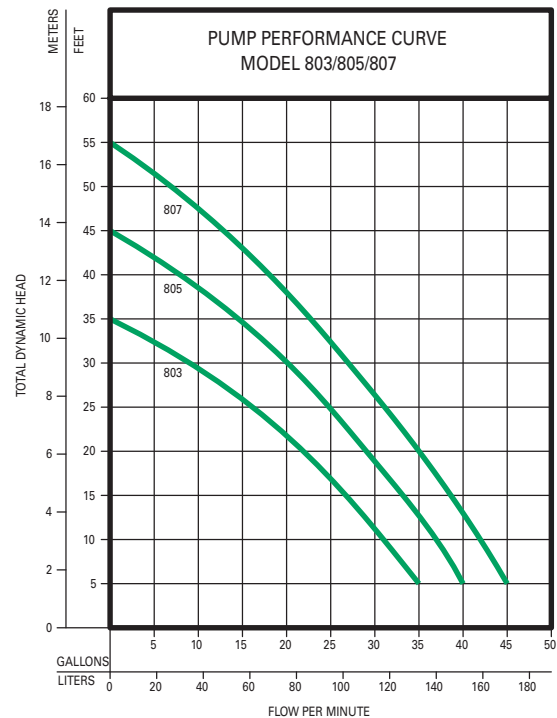


18" x 30" (46 x 76 cm)



24" x 24" (61 x 61 cm)

For complete product information, visit: zoellerpumps.com



Sump & Sewage Basins

SPECIFICATIONS:

- Available in high-density polyethylene structural foam (PSF), polyethylene or fiberglass
- Ideal for residential, commercial and industrial applications
- Complete with necessary sealing hardware and flanges
- Available with 2" or 3" vent and 2" or 3" discharge
- Lid with gasket and 4" cast iron inlet hub with anti-corrosion coating are included with the sewage basins
- Centerline of hub is located 10-1/2" (26.7 cm) from top of basin (std.). Custom locations available
- Polyethylene sewage pump basins are IAPMO approved. For 10' (3 m) stack test models, refer to charts on FM0487
- Sealed (radon) basins for sump pumps in 18" x 22" (45.7 x 55.9 cm) and 18" x 30" (45.7 x 76.2 cm) sizes
- Polyethylene sump basin available with plastic unsealed covers in 18" x 22" (45.7 x 55.9 cm)
- Sewage basins are watertight and gas-tight when properly installed
- Durable steel cover with gasket standard on simplex and duplex sewage basins
- One piece, seamless construction on all basins
- Duplex covers include two pump plates and inspection plate
- Ready to install for economical and simple installation
- Dimensional engineering data available
- Temperature rated 130 °F (54 °C)
- Fiberglass models available that will pass the 10' (3 m) water stack test. (Refer to charts on FM0487) (L. A. - RR-5311)
- Various custom diameters and lengths available in fiberglass. Consult factory. Also with 10' (3 m) water stack test



See FM0487 for further information and accessories.



QLS Series

QLS SERIES[®]

PREFABRICATED LIFT STATIONS WITH Z-RAIL[®] TECHNOLOGY

Complete grinder package systems are factory assembled for quicker, easier installation at the jobsite. Zoeller's Z-Rail[®] Technology with powder coated, ductile iron elbows and brackets provides longer life and reliability. Dual-rail system offers added support and stability while raising and lowering pumps compared to single-rail systems. A wide variety of basin diameters and depths are stocked to accommodate almost any job. Cover choices include solid fiberglass and either steel or aluminum hatches.

Z-Rail[®] System

Both the disconnect portion and the upper guide rail supports are made of domestic epoxy powder coated ductile iron, providing superior strength. Dual guide rails add stability, ensuring that the pump will not spin on the rail during installation or removal.

Basin

Zoeller Company stocks many different basin and cover options to fit a multitude of wastewater collection projects. Basin sizes from 24" x 48" to 48" x 120" meet most application needs. Customized packages available.

Basin Cover

Solid fiberglass, aluminum hatch, and steel hatch covers are stocked for QLS Series[™] packages.

Three Way Ball Valve

The QLS Series[™] systems utilize a 3-way ball valve in duplex configurations. The valve is positioned so that the service providers can easily isolate pumps without entering the basin.

Pipe Seal Hub

A 4" pipe seal is provided as a convenient field-installed inlet hub.

AFD

QLS Series[™] basins come with an anti-floatation collar to resist buoyancy in high groundwater locations.

Flex-Boot Discharge Connection

A flexible, stable discharge seal remains watertight despite external pressures due to pipe settling.

Schedule 80 PVC Piping

Schedule 80 PVC discharge piping provides greater support and dependability with its thicker walls and higher pressure rating.



Valves: Check, Ball, & Plug

Full-Flow Unichecks

30-0152 / 30-0160
30-0163 / 30-0164
1-1/4" - 3" Cast Iron



SPECIFICATIONS:

- Vertical or horizontal installation
- Full-flow design, no restrictions
- Stops backflow of water
- Standard, 1-1/4", 1-1/2", 2", 3" female NPT pipe
- Neoprene polyester, reinforced flapper, smooth edge design, with cast iron and non-corrosive metal backing plates and stainless steel fastener
- Corrosion-resistant, powder coated epoxy finish
- Rated at 50 PSI (115' [35 m] of head) at 130 °F (54 °C)
- Stainless steel bolts
- Suitable for installation below basin cover



30-0021 / 30-0151 2" Plastic or Cast Iron Slip Union



SPECIFICATIONS:

- Full 2" flow design - meets BOCA (P.604.2) 2" full flow pump code
- Checks backflow of water
- Simple to install (no threading of pipe required). Save time and material costs
- Neoprene gasket and flapper, weighted with heavy stainless steel metal backing plates and rivet
- Vertical or horizontal installation
- Slips over ABS, PVC, steel or copper pipe
- Reduces motor and pump noise
- Flexible neoprene slip x slip union includes stainless steel clamps for low pressure systems. Avoid more than 10' (3 m) static head above the check valve. 4.3 PSI at 130 °F (54 °C)
- Extra wide hinge to reduce stress
- Plastic check has PVC body and can be installed with solvent-welded couplings for pressure systems to 25 PSI, 57' (17.4 m) of head (30-0023)
- Model 30-0151 has corrosion-resistant, powder coated epoxy finish
- Stainless steel sleeves available to meet Illinois Plumbing Code. (Cast Iron 30-0201 / PVC 30-0202)
- Meets requirements of Wisconsin Uniform Plumbing Code

Full-Flow Unichecks

30-0181 / 30-0200
1-1/4" - 1-1/2" Slip x Slip Union



SPECIFICATIONS:

- Flapper bends over a radius, no sharp 90° edges — lengthens life of flapper hinge
- PVC plastic check body, ultrasonically welded and can be solvent-welded for rigid, pressure-rated piping systems to 25 PSI, (57' [17.4 m] of head) at 130 °F (54 °C) (30-0182)
- Vertical or horizontal installation
- Available in individual packages for pegboard display (30-0191)
- All stainless steel screws, nuts and clamps on model 30-0200 only
- Slip x slip for 4.3 PSI, 10' (3 m) of head at 130 °F (54 °C). Avoid more than 10' (3 m) static head above the check valve.
- Designed to reduce water hammer

30-0214 / 30-0215 / 30-0216 1-1/4" - 2" Cast Iron NPT High-Temperature



SPECIFICATIONS:

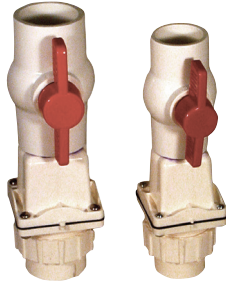
- Use with 2000 and 3000 series high-temperature pumps
- Vertical or horizontal installation
- Full-flow design, no restrictions
- Stops backflow of water
- Standard 1-1/4", 1-1/2", 2" female NPT pipe
- EPDM strand-reinforced flapper, smooth-edge design with cast iron and non-corrosive metal backing plates & stainless steel fastener
- Corrosion-resistant, powder coated epoxy finish
- Rated at 50 PSI (115' [35 m] of head) at 200 °F (93 °C)
- Stainless steel bolts



Valves: Check, Ball, & Plug, continued

Tri-Check®

30-0100 / 30-0101 1-1/2" - 2" PVC Check Valve/Ball Valve Union Combination



SPECIFICATIONS:

- Full-flow check valve design
- Threaded union allows pump to be removed without disrupting discharge piping
- Saves time and money - easy to install
- Neoprene gasket and flapper, weighted with stainless steel backing plates and rivet
- Can be installed on vertical or horizontal pipe
- Meets plumbing codes requiring a ball valve installed in conjunction with a check valve

The Combo

30-0102 / 30-0103 1-1/2" - 2" PVC Check Valve Union Combination



SPECIFICATIONS:

- All stainless steel screws
- Replaceable flapper in the check valve
- Extra wide hinge to reduce stress
- Rated for 25 psi, 57' (17.4 m) of head

Quiet Check - PVC Solvent Weld with Union Check Valve



P/N 30-0040
White PVC

P/N 30-0041
Clear PVC

P/N 30-0046
White PVC

P/N 30-242
Clear PVC

SPECIFICATIONS:

- 1/2 lb. (0.23 kg) spring eliminates water hammer
- Reduces motor and pump noise
- Designed for both horizontal and vertical usage
- Full-flow, non-clog design installation
- Durable PVC check body and compression end fittings
- Solvent-weld ends allow for easy installation
- 30-0044 and 30-0045 have no unions
- No threading of pipe required - saves time and money
- Pressure rated at 50 PSI (115' [35 m])
- 30-0241 & 30-0242 Slip Union: 40 PSI (92' [28 m])
- 30-0243 & 30-0244 Slip Union: 30 PSI (69' [21 m])
- Consult factory for use over 130 °F (54 °C)
- Suitable for installation below basin cover

P/N	SERVICE PART
152294	1-1/2" union assembly
152293	2.0" union assembly

QUIET CHECKS PVC SOLVENT WELD					
Item Number	Pipe size	Valve Body	Weight (lbs/kg)	Length (in/mm)	Carton Qty
30-0239	1-1/4"	White	0.75 lbs/0.3 kg	9.50"/241 mm	12
30-0040	1-1/2"	White	2 lbs/0.9 kg	9.50"/241 mm	12
30-0041	1-1/2"	Clear	2 lbs/0.9 kg	9.50"/241 mm	12
30-0042	2"	White	3 lbs/1.4 kg	10.50"/267 mm	12
30-0043	2"	Clear	3 lbs/1.4 kg	10.50"/267 mm	12
30-0044	3"	White*	3 lbs/1.4 kg	9.50"/241 mm	8
30-0045	3"	Clear*	3 lbs/1.4 kg	9.50"/241 mm	8

QUIET CHECKS PVC SLIP UNION					
Item Number	Pipe size	Valve Body	Weight (lbs/kg)	Length (in/mm)	Carton Qty
30-0241	1-1/2"	White	1.2 lbs/0.5 kg	10.50"/267 mm	12
30-0242	1-1/2"	Clear	1.2 lbs/0.5 kg	10.50"/267 mm	12
30-0243	2"	White	1.8 lbs/0.8 kg	11.50"/292 mm	12
30-0244	2"	Clear	1.8 lbs/0.8 kg	11.50"/292 mm	12

QUIET CHECKS WITH QUARTER TURN BALL VALVES					
Item Number	Pipe size	Valve Body	Weight (lbs/kg)	Length (in/mm)	Carton Qty
30-0046	1-1/2"	White	3 lbs/1.4 kg	14.75"/375 mm	12
30-0047	1-1/2"	Clear*	3 lbs/1.4 kg	14.75"/375 mm	12
30-0048	2"	White	4 lbs/1.8 kg	16.12"/409 mm	12
30-0049	2"	Clear*	4 lbs/1.8 kg	16.12"/409 mm	12

*Solvent weld only. No unions included (see chart).

GENERAL CAUTION: Water hammer creates momentary high pressure surges. These surges can cause severe damage to check valves and the piping system. Consideration for water hammer must be included in the piping system design. Reference ASPE Data Book, Chapter 2.33. May require check valves with special non-slam features or other engineered solutions.

Valves: Check, Ball, & Plug, continued

Compression 1-1/2" - 3" Compression Unichecks



ITEM NO.	PIPE SIZE	WEIGHT (lbs/kg)	LENGTH (in/mm)	CARTON QTY
30-0015	1-1/2"	1.1 lbs/0.5 kg	7-1/2"/180 mm	12
30-0020	2"	1.7 lbs/0.8 kg	9-3/4"/248 mm	12
30-0030	3"	5 lbs/2.3 kg	14"/356 mm	2

Pressure rated to 125 psi (861 kPa) at 285' (86.9 m) at 75 °F (24 °C)

3" & 4" Flanged Check Valves

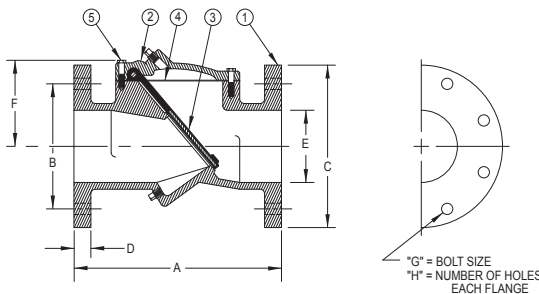
SPECIFICATIONS:

- Heavy-duty ductile iron construction
- Angled seal for non-slam closure
- Non-clog design
- Reinforced disc
- Drip-tight seating
- Rated up to 250 PSIG
- Designed for both horizontal and vertical usage
- Optional backflow actuator and mechanical indicator



PART NO.	VALVE SIZE	"A" (in/mm)	"B" (in/mm)	"C" (in/mm)	"D" (in/mm)	"E" (in/mm)	"F" (in/mm)	"G" (in/mm)	"H" (in/mm)	WEIGHT (lbs/kg)
6030-0197	2-1/2"	8-1/2"/ 215.9 mm	5-1/2"/ 139.7 mm	7"/ 177.8 mm	11-1/16"/ 17.5 mm	1-1/2"/ 63.5 mm	3-3/8"/ 85.7 mm	5/8"/ 15.9 mm	4"/ 101.6 mm	32 lbs/ 14.5 kg
6030-0202	3"	9-1/2"/ 241.3 mm	6"/ 152.4 mm	7-1/2"/ 196.5 mm	3/4"/ 19.1 mm	3"/ 76.2 mm	5-1/8"/ 130.2 mm	5/8"/ 15.9 mm	4"/ 101.6 mm	37 lbs/ 16.8 kg
6030-0203	4"	11-1/2"/ 292.1 mm	7-1/2"/ 190.5 mm	9"/ 228.6 mm	15/16"/ 23/9 mm	4"/ 101.6 mm	5-3/4"/ 146.1 mm	5/8"/ 15.9 mm	8"/ 203.2 mm	63 lbs/ 28.6 kg

REF NO.	PART NAME	MATERIAL
1	Body	Ductile iron ASTM A536, Grade 65-45-12
2	Cover	Ductile iron ASTM A536, Grade 65-45-12
3	Disc	Buna-N w/ steel and nylon reinforcement
4	Gasket	Compressed non asbestos fiber
5	Cover Bolt	Alloy steel SAE Grade 5



ZEPA0520

Inline 30-0238 Inline Check Valve



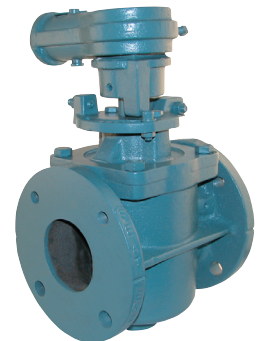
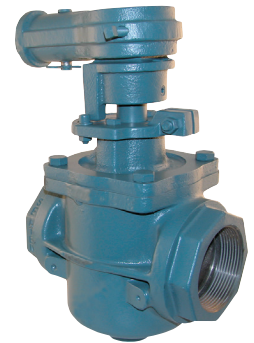
SPECIFICATIONS:

- Rubber coupling with stainless steel clamps
- Threads into pump discharge
- Pre-drilled weep hole
- 4.3 PSI, 10' (3 m) of head max
- Vertical installation only

2", 3" & 4" Cast Iron Plug Valves

SPECIFICATIONS:

- Designed to handle solids-bearing flows
- Cast iron housing - rated 175 psi
- 99% pure nickel welded seat
- 1/4 turn Buna plug
- Upper and lower ball bearings
- Provided with hand lever*



*Hand lever not shown in photos

THREADED MODELS				
SIZE	PART NO.	WIDTH (in/mm)	HEIGHT (in/mm)	WEIGHT (lbs/kg)
2"	6030-0082	5-1/4"/ 133.4 mm	7-1/8"/ 181.0 mm	12 lbs/12.4 kg
3"	6030-0083	8-3/4"/ 222.3 mm	14-1/8"/ 358.8 mm	45 lbs/20.4 kg

FLANGED MODELS				
SIZE	PART NO.	WIDTH (in/mm)	HEIGHT (in/mm)	WEIGHT (lbs/kg)
3"	6030-0085	8"/ 203.2 mm	14-1/8"/ 358.8 mm	53 lbs/24.0 kg
4"	6030-0086	9"/ 228.6 mm	16-3/4"/ 425.5 mm	66 lbs/29.9 kg

GENERAL CAUTION: Water hammer creates momentary high pressure surges. These surges can cause severe damage to check valves and the piping system. Consideration for water hammer must be included in the piping system design. Reference ASPE Data Book, Chapter 2.33. May require check valves with special non-slam features or other engineered solutions.

Switch-Mate Piggyback

Variable Level Float Switch

SPECIFICATIONS:

- Converts nonautomatic pump to automatic pump
- Simple installation
- Adjustable/variable level
- Standard 15' (5 m) and 20' (6 m) SJOW CPE cord with molded plug. 10-0055 and 10-0065 - 10' (3 m) cord standard
- Float is constructed of durable PVC/polypropylene
- Standard - normally open (NO) ("pumps down")
- Optional - normally closed (NC) ("pumps up"). Consult factory
- Maximum operating temperature for 10-0748: 120 °F (49 °C). All other switches: 140 °F (60 °C)
- Float is omnidirectional
- Includes mounting clamp
- Designed for EFFLUENT, SEWAGE and DEWATERING applications
- Variable level float switch, for use in 18" (45.7 cm) minimum diameter basins
- 10-0748 - 25' (8 m) cord standard, no molded plug. Can be used as a control switch to operate an external magnetic or combination starter on three phase pumps
- Vertical piggyback float switch. Ideal for narrow diameter basins. 6.5" (16.5 cm) maximum cycle range
- Use recommendation chart for switch selection

Single Piggyback Variable Level Float Switch

13 AMP MAXIMUM	15 AMP MAXIMUM	20 AMP MAXIMUM
Normally Open (NO)	Normally Open (NO)	Normally Open (NO)
10-0055 - 115 V - 10' (3 m)	10-0032 - 115 V - 15' (5 m)	10-0748 - 115 V/230 V - 25' (8 m)
10-0034 - 115 V - 15' (5 m)	10-0033 - 230 V - 15' (5 m)	
10-0035 - 230 V - 15' (5 m)	10-0705 - 115 V - 20' (6 m)	
10-0063 - 115 V - 20' (6 m)	10-0559 - 230 V - 20' (6 m)	
10-0706 - 230 V - 20' (6 m)		
Normally Closed (NC)	Normally Closed (NC)	
10-0065 - 115 V - 10' (3 m)	10-0064 - 115 V - 15' (5 m)	
10-0037 - 115 V - 15' (5 m)		
10-0062 - 230 V - 15' (5 m)		



Note: All variable level float switches in this section are mechanically activated and do not contain mercury.



Single Piggyback Vertical Float Switch

13 AMP MAXIMUM NORMALLY OPEN (NO) VERTICAL
10-2041 - 115 V - 10' (3 m)
10-2042 - 115 V - 15' (5 m)
10-2043 - 115 V - 20' (6 m)



Double Piggyback Variable Level Float Switch

MECHANICAL
10-1964 - 115 V - 15 Amp - 15' (5 m)
10-1965 - 230 V - 15 Amp - 15' (5 m)



Variable Level Control Switches

APPLICATIONS:

- Simplex or duplex pump control and high level alarm on electrical alternating control panel systems
- For dewatering, effluent and sewage applications
- Switch for APak®

SPECIFICATIONS:

- Float is constructed of durable PVC/polypropylene
- Standard mechanical variable level control switches are rated for 115/230 V, 5 Amps
- Low-current, mechanical variable level control switches are rated for 125 VAC/30 VDC, 0.1 Amps
- 18/2 Type SJOW CPE cord standard
- Cords are available in 15-25-35-50' (5-8-11-15 m) lengths
- Temperature rating of 140 °F (60 °C)
- Approximately 1.5" (38 mm) liquid level differential in switching action

ADJUSTABLE WEIGHT: (P/N 10-0689) provides an accurate pivot point for suspended float switches.

- Gripping teeth on clip and weight channel securely lock float cable into place
- Cable weight can be adjusted without the use of tools

HOUSING: 1lb 12oz. (0.8 kg), 2.8" x 3.3" (7.1 x 8.4 cm), impact-resistant and non-corrodible, PVC housing for liquids up to 140 °F (60 °C)

CLIP: injection-molded acetal plastic

WIRE/CABLE ACCOMODATED: SJOW, SJTW, 18/2, 18/3, 16/3, 14/2, 14/3

SHIP WEIGHT: 2 lbs. (0.9 kg)

FLOAT SWITCHES			
Mechanical		Cord Length (ft/m)	Mounting Method
Standard P/N*	Low Current P/N**		
10-0743	10-2060	15/5	Clamp
10-0744	10-2061	20/6	Clamp
10-1877	10-2062	25/8	Clamp
10-1878	10-2063	35/11	Clamp
10-1879	10-2064	50/15	Clamp
10-1880	10-2065	15/5	Adjustable Weight
10-1881	10-2066	25/8	Adjustable Weight
10-1882	10-2067	35/11	Adjustable Weight
10-1883	10-2068	50/15	Adjustable Weight

FLOAT SWITCH TREES			
Mechanical		Cord Length (ft/m)	Mounting Method
Standard P/N*	Intrinsically Safe P/N**		
10-1456	10-1456	---	Tree Only
10-1886	10-2069	15/5	(3) 15' (5 m) Floats & Tree
10-1887	10-2070	15/5	(4) 15' (5 m) Floats & Tree

* Not for use with intrinsically-safe control systems.

** For use with intrinsically-safe control systems only.

Products may not be exactly as pictured.



SmartPak® Plus

10-0804 Residential Alternator System

SPECIFICATIONS:

- Alternates two automatic pumps up to 1/2 HP, 12 amps each, 115 V, single phase (not to be used with model 63 or model 95 pump, or with any model grinder pump)
- Extends pump life
- Compact design easily mounts in confined spaces
- Circuit fault protection
- Specially designed for humid areas
- Universal connection for alarm switch replacement
- Auxiliary output contacts (normally open) for remote alarm connection
- Solid green LED lights for Pump 1, Pump 2 and Power
- Flashing red LED lights for alarm conditions
- 9' (2.7 m) power cord
- Multiple alarm modes will alert user to potential problems and protect property by switching to the other pump when necessary

Alarms include:

- High water
 - Loss of power
 - Continuous pump run
 - Breaker tripped
 - Pump failure
- Button for Silence and Reset
 - Built-in, rechargeable battery will operate the alarm and LED lights for a limited time during power outage

Note: Not to be used with model 63 or model 95 pump, or with any model grinder pump.



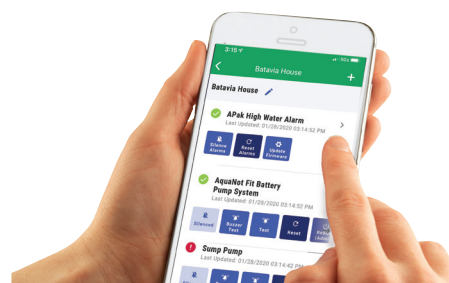
Z Control® Gateway

90002-0001

Use the Wi-Fi Gateway to connect your Zoeller product (Pivot Pro and LPS control panels) to the Z Control® Cloud in just a few simple steps. Connecting to the Cloud allows the user to gain remote access to control and manage devices and to receive email, text, and push alert notifications and reminders.

SPECIFICATIONS:

- Simple set-up
- Automatically pairs with connected device
- Compact design (3.5" x 2.5" x 1")
- Lower cost than previous model
- Free standard access. No additional charge or subscription needed for standard Z Control® account access
- Includes 3' Cat5 cable and hook and loop fasteners for mounting
- Nema 1 enclosure (for indoor use only)



Download the app. Search your app store for "Z Control".



APak[®] Alarm Systems

The APak[®] alarm is compact and easy to install. It is CSA approved in a NEMA 1 enclosure. Battery life is over 1 year from 2 AA batteries. Alarm may be used as AC only, DC only, or AC/DC applications. The APak[®] alarm system sounds a horn when a potentially threatening liquid level condition occurs. The horn can be silenced, but the alarm light remains on until the condition is remedied.

A green "POWER ON" light indicates 120 V primary power to the alarm. A low battery chirp feature indicates when the battery should be replaced. A red "ALARM" light indicates a high-level condition.

NOTE: It is always recommended to power the alarm from a separate circuit than the pump to avoid losing power to both during a tripped breaker scenario.

10-4012 Apak[®] Alarm

SPECIFICATIONS:

- NEMA 1 enclosure (INDOOR USE ONLY)
- Automatic alarm reset
- Horn is rated 87 decibels at 10' (3 m)
- 2 AA battery backup (battery not included)
- 15' (5 m) alarm (12 V) tethered switch
- 6' (2 m) power cord
- Auxiliary dry contacts (use 10-4014)



10-4012

10-4011 Apak[®] Alarm

SPECIFICATIONS:

Same standard features of our 10-4012 with:

- 15' (5 m) alarm reed switch
- Auxiliary dry contacts (use 10-4013)

Z Control[®] Enabled Models

10-4013 and 10-4014 Apak[®] Indoor Alarms

SPECIFICATIONS:

- 10-4013 comes with reed sensor
- 10-4014 comes with mechanical float switch
- 10-4683 comes with no switch
- All the standard features plus:
- 2nd input for additional monitoring ability
- Dry contacts for connection to home security system, etc.
- Z Control Enabled
 - Wi-Fi[®] equipped
 - Receive free text, email, and push alerts on:
 - Power outage
 - Low battery
 - Input 1 or 2 triggers
 - Loss of contact with Z Control[®]
 - Remotely silence, reset alarm.
 - Free Z Control App and Web interfaces
 - Free Z Control account
 - No monthly cost
 - Simple setup
 - Z Control connectivity LED



10-4013

APak[®] Alarm Systems

91104-0001 Apak[®] Outdoor Alarm

SPECIFICATIONS:

- APak Outdoor Alarm System Features
- NEMA 4X Outdoor use per UL 864 for US and Canada
- Alarm system (horn & light) operates to warn of a high-water condition
- Horn is rated 82 decibels at 10' (3 m)
- Auxiliary dry contacts for high level alarm, 5 Amps
- Operates on separate circuit from pump, 115 VAC
- Alarm test and horn silence switch with automatic reset
- Terminal connections for a pump and float switch (Model 91104-0001)
- Can be used with liquids to 140 °F (60 °C)
- 15' (5 m) float switch (Model 91104-0001)
- 20' (6 m) float switch, 6' (2 m) power cord, watertight cord connectors (Model 10-0682)
- 3 year limited warranty (Model 10-2614, 10-0682, 91104-0001)

NOTE: All variable level float switches in this section are mechanically activated and do not contain mercury.



91104-0002 Apak[®] Outdoor Alarm

SPECIFICATIONS:

Same standard features of our 91104-0001 with:

- 20' (6 m) alarm (12 V) tethered switch
- 6' (2 m), 115 V power cord with water-tight cord connectors



Flood Alert[®]

10-0763

High Water Alarm

SPECIFICATIONS:

- Operates on (3) AAA batteries
- Low battery alarm
- Warns you when sensor contacts water
- Loud intermittent horn rated at 103 +/- 3 db at 1' (30 cm)
- On/Off silence switch
- Stainless steel sensor contacts
- Easy to install, portable and safe!
- Compact design (3-1/4" x 2-1/4" [8.3 x 5.7 cm])
- No adjustments needed
- Solid state electronic components
- 5' (1.5 m) of lead wire
- 12-month limited warranty
- AC power adapter capability. Requires Class 2 transformer, Input: 120 VAC/60 Hz, output: 4.5 VDC/150 mA, tip positive, type B plug. (Not included, but available at most electronics stores)

Flexible sensor wire allows this alert to be used in many applications. Alerts you of overflowing:

- Sump pump • Toilets • Broken pipes
- Dishwashers or washing machines • Laundry sinks
- Air conditioning pans • Bath tubs or hot tubs



Simplex Control Panels

Pivot® 1Ph Control Panel

Text Key:

Features common with our previous model
Additional STANDARD features on Pivot®

Pivot®: 115/200/230
 Simplex and Duplex models
 Limited 5 year warranty



Touch-safe user interface
LED indicators:

- System Ready
- Float switch LED indicators
- float switch faults
- Pump Run LED indicator(s)

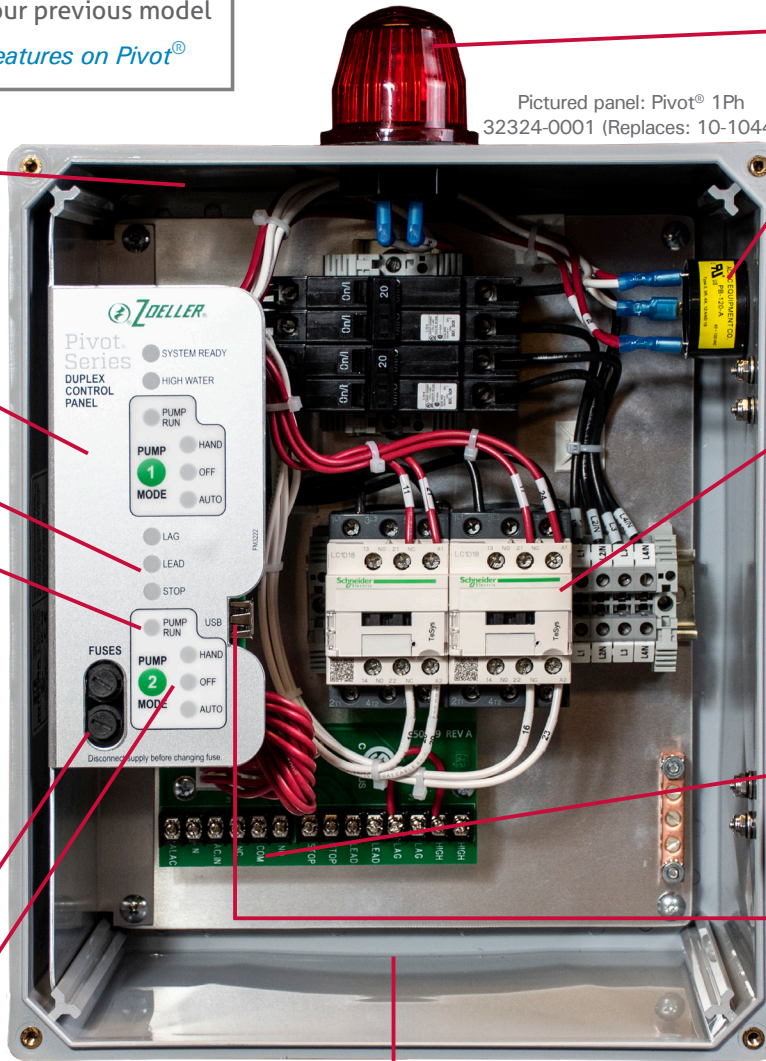
Latching globe and horn feature

- 3 or 4 float switch operation
- choice of multiple float logic and orders
- built in switch redundancy
- configurable float switch operation
- choose between Smart and Relay Switch Logic

Separate fuses for alarm and control circuits

Smart HOA:

- prevents accidental On or Off
- Off mode reminder



Pictured panel: Pivot® 1Ph 32324-0001 (Replaces: 10-1044)

Top mount globe
-varying globe patterns for distinct alarm conditions

Side mount horn

Side mount Test/Silence switch

Test switch tests all LEDs, globe, and horn

NEMA 4X enclosure, locking hasp, dead front.
12x10x6 Pivot™

Motor contactor(s), breakers (1Ph)
-staggered pump start

- Alarms for:
- high water alarm
 - continuous pump run
 - incorrect control voltage
 - disabled alarm circuit
 - failed contactor
 - overload
 - float fault
 - HOA Off timeout

Auxiliary output, form C (aka dry contacts)

- USB features:*
- pump starts counter
 - elapsed time meter
 - custom configurations
 - update firmware

Factory Reset for clearing and troubleshooting
 Set of 5 PCB jumpers for selection of preferences

Ample room for field wiring



Duplex Control Panels

Pivot[®] Pro 1Ph and 3Ph Control Panels

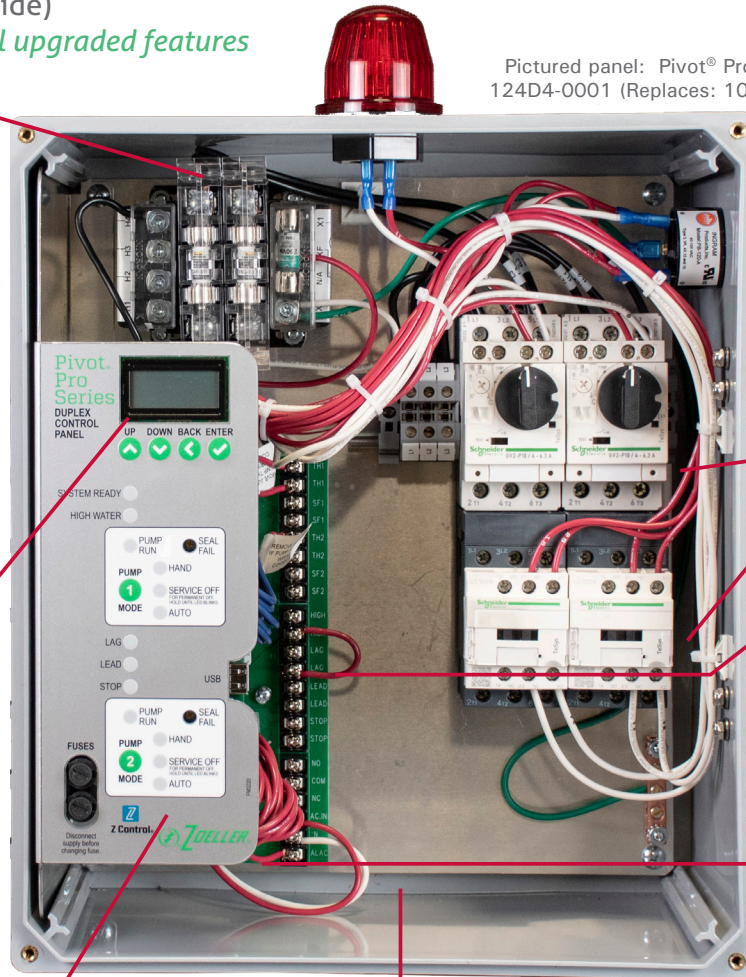
Pivot[®] Pro includes all the features of the Pivot[®] (other side)
PLUS these additional upgraded features

Pivot[®] Pro: 1Ph and 3Ph circuit breakers or 3Ph 200/230/460V with multi-tap transformer

Simplex and duplex models
 Limited 5 year warranty



Pictured panel: Pivot[®] Pro 3Ph
 124D4-0001 (Replaces: 10-1108)



- LCD display:**
- full menu system for configuration
 - keypad lock for security
 - service information: name and phone number
 - review pump starts, elapsed run times, and other system data
 - selectable ratio for pump alternation (duplex)
 - lead/lag select (duplex)
 - configurable continuous run alarm timer
 - horn configurable: latching/active

- Smart HOA:**
- prevents accidental pump damage
 - reminder to return to Auto operation
 - adjustable behaviors

Ample room for field wiring

NEMA 4X enclosure, locking hasp, dead front.
 -14x12x6 Pivot[®] Pro

Motor contactors with built-in pump run contacts. Overloads (3Ph)

Terminal strip for circuit and alarm power, float switches, auxiliary contacts, seal fail leads, and thermal leads.

Data jack for Z Control[®] Gateway (sold separately)
 Z Control[®] includes:
 -remote testing and monitoring
 -remote configuration
 -alert notifications: text, email, app push.

Common Control Panels

Panel	Category	Item Number	Description
10-0125	Pivot	31354-0001	Control,Pivot/Sim/1Ph/115/200/230V/0-20FLA/Standard
10-1036	Pivot	31314-0001	Control,Pivot/Sim/1Ph/115/200/230V/0-7FLA/Standard
10-4463			
10-1037	Pivot	31324-0001	Control,Pivot/Sim/1Ph/115/200/230V/7-15FLA/Standard
10-4465			
10-1038	Pivot	31334-0001	Control,Pivot/Sim/1Ph/115/200/230V/15-20FLA/Standard
10-1201	Pivot	31344-0001	Control,Pivot/Sim/1Ph/115/200/230V/20-30FLA/Standard
10-0092	Pivot	32354-0001	Control,Pivot/Dup/1Ph/115/200/230V/0-20FLA/Standard
10-0093			
10-1039	Pivot	32124-0001	Control,Pivot/Dup/1Ph/115V/7-15FLA/Standard
10-1041			
10-1040	Pivot	32134-0001	Control,Pivot/Dup/1Ph/115V/15-20FLA/Standard
10-1042			
10-1043	Pivot	32314-0001	Control,Pivot/Dup/1Ph/115/200/230V/0-7A/Standard
10-4462			
10-1044	Pivot	32324-0001	Control,Pivot/Dup/1Ph/115/200/230V/7-15FLA/Standard
10-4464			
10-1045	Pivot	32334-0001	Control,Pivot/Dup/1Ph/115/200/230V/15-20FLA/Standard
10-1046	Pivot	32344-0001	Control,Pivot/Dup/1Ph/115/200/230V/20-30FLA/Standard
10-1074	Pivot Pro	114A4-0001	Control,Pivot Pro/Sim/3Ph/200/230/460V/1.0-1.6FLA/Standard
10-1076	Pivot Pro	114B4-0001	Control,Pivot Pro/Sim/3Ph/200/230/460V/1.6-2.5FLA/Standard
10-1078	Pivot Pro	114C4-0001	Control,Pivot Pro/Sim/3Ph/200/230/460V/2.5-4.0FLA/Standard
10-1080	Pivot Pro	114D4-0001	Control,Pivot Pro/Sim/3Ph/200/230/460V/4.0-6.3FLA/Standard
10-1082	Pivot Pro	114E4-0001	Control,Pivot Pro/Sim/3Ph/200/230/460V/6-10FLA/Standard
10-1083	Pivot Pro	114F4-0001	Control,Pivot Pro/Sim/3Ph/200/230/460V/9-14FLA/Standard
10-1084	Pivot Pro	114G4-0001	Control,Pivot Pro/Sim/3Ph/200/230/460V/13-18FLA/Standard
10-1086	Pivot Pro	114H4-0001	Control,Pivot Pro/Sim/3Ph/200/230/460V/17-23FLA/Standard
10-1087	Pivot Pro	114Q4-0001	Control,Pivot Pro/Sim/3Ph/200/230/460V/20-25 FLA/Standard
10-1102	Pivot Pro	124A4-0001	Control,Pivot Pro/Dup/3Ph/200/230/460V/1.0-1.6FLA/Standard
10-1104	Pivot Pro	124B4-0001	Control,Pivot Pro/Dup/3Ph/200/230/460V/1.6-2.5FLA/Standard
10-1106	Pivot Pro	124C4-0001	Control,Pivot Pro/Dup/3Ph/200/230/460V/2.5-4.0FLA/Standard
10-1108	Pivot Pro	124D4-0001	Control,Pivot Pro/Dup/3Ph/200/230/460V/4.0-6.3FLA/Standard
10-1110	Pivot Pro	124E4-0001	Control,Pivot Pro/Dup/3Ph/200/230/460V/6-10FLA/Standard
10-1111	Pivot Pro	124F4-0001	Control,Pivot Pro/Dup/3Ph/200/230/460V/9-14FLA/Standard
10-1112	Pivot Pro	124G4-0001	Control,Pivot Pro/Dup/3Ph/200/230/460V/13-18FLA/Standard
10-1114	Pivot Pro	124H4-0001	Control,Pivot Pro/Dup/3Ph/200/230/460V/17-23FLA/Standard
10-1115	Pivot Pro	124Q4-0001	Control,Pivot Pro/Dup/3Ph/200/230/460V/20-25FLA/Standard
10-1183	Pivot Pro	124R4-0001	Control,Pivot Pro/Dup/3Ph/200/230/460V/23-32FLA/Standard
10-1184	Pivot Pro	12404-0001	Control,Pivot Pro/Dup/3Ph/200/230/460V/30-40FLA/Standard
n/a	Pivot Pro	11354-0001	Control,Pivot Pro/Sim/1Ph/115/200/230V/0-20A
n/a	Pivot Pro	11314-0001	Control,Pivot Pro/Sim/1Ph/115/200/230V/0-7A
n/a	Pivot Pro	11324-0001	Control,Pivot Pro/Sim/1Ph/115/200/230V/7-15A
n/a	Pivot Pro	11334-0001	Control,Pivot Pro/Sim/1Ph/115/200/230V/15-20A
n/a	Pivot Pro	11344-0001	Control,Pivot Pro/Sim/1Ph/115/200/230V/20-30A
n/a	Pivot Pro	12354-0001	Control,Pivot Pro/Dup/1Ph/115/200/230V/0-20A
n/a	Pivot Pro	12124-0001	Control,Pivot Pro/Dup/1Ph/115V/7-15A
n/a	Pivot Pro	12134-0001	Control,Pivot Pro/Dup/1Ph/115V/15-20A
n/a	Pivot Pro	12314-0001	Control,Pivot Pro/Dup/1Ph/115/200/230V/0-7A
n/a	Pivot Pro	12324-0001	Control,Pivot Pro/Dup/1Ph/115/200/230V/7-15A
n/a	Pivot Pro	12334-0001	Control,Pivot Pro/Dup/1Ph/115/200/230V/15-20A
n/a	Pivot Pro	12344-0001	Control,Pivot Pro/Dup/1Ph/115/200/230V/20-30A

For many other variations, see FM3459, Pivot Selection Guide for ZPC Pumps.

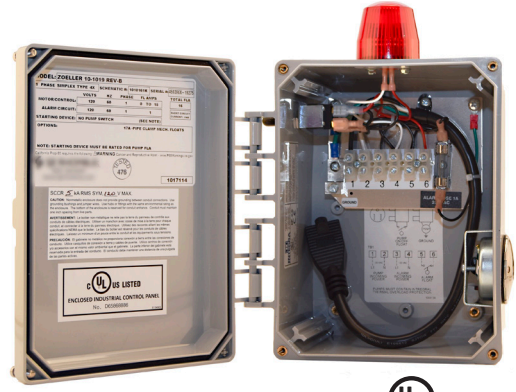
Control Panels

An electrical control panel is used on a simplex pump application where automatic electrical cycling of the pump is desired for added protection in residential or commercial applications. A control panel is required for all systems using a nonautomatic pump. The built-in alarm system, a standard feature, will activate when the water level becomes unusually high. All electrical systems must be installed by a qualified electrician and according to the National Electrical Code (see Section 430-71 though 430-113, plus any others that apply).

Plug-in Control Panel Single Phase

SPECIFICATIONS:

- 115V (10-1019) or 230V (10-1023)
- NEMA 4X enclosure with hinged cover
- Corded plug for use with piggyback pump switch
- Alarm horn (83 to 85 decibel rating)
- Terminal strip
- Horn silence switch to turn alarm on or off
- Alarm float only



Simplex and Duplex with Intrinsically-Safe Relays For Explosion-Proof Pumps

These intrinsically-safe control panels are used on pump applications defined as a hazardous duty location. Lift stations in some regions fall under this classification. The intrinsically-safe panel, in conjunction with an explosion-proof pump, will provide a system that will not allow ignition of explosive gases. The purpose of the control panel is to cycle a pump automatically. Each panel comes standard with pump run light(s), a high water audible and visual alarm, seal fail indicator(s), and a UL Listing. All panels come standard with a NEMA 4X rating for indoor or outdoor use.

These panels MUST NOT be in the space classified as needing explosion-proof equipment. Special fittings that either prevent the passage of hot gases, in the case of an explosion in a Class I area, or the passage of combustible dust, fibers, or flyings in a Class II or III area (NEC 501-5 and 502-5) are required. A qualified electrician must install all electrical systems. National Electrical Code (NEC) Articles 500 through 503 explain in detail the requirements for the installation of wiring or electrical equipment in hazardous locations. These articles, along with other applicable regulations, local governing inspection authorities, insurance representatives, and qualified engineering/technical assistance, should be your guides to the installation of wiring or electrical equipment in any hazardous or potentially hazardous location.

SPECIFICATIONS:

- Intrinsically-safe relays
- NEMA 4X enclosure
- Top-mounted alarm light
- Hands-off-auto toggle switch for each pump
- UL Listed
- Alarm horn with silence switch
- Magnetic motor contactor
- Lockable Latch
- Auxiliary dry contact/high water alarm
- Circuit breaker pump disconnect
- 3 or 4 variable float switch control operation
- Off-the-shelf components provide for relatively easy field maintenance and repair
- Green pump run pilot light for each pump
- Seal fail indicator light(s)
- Thermal cutouts for 3 phase
- Duplex only - lead/lag alternating circuit



Tested to UL Standard UL 508

STANDARD ENCLOSURE DIMENSIONS		
Panel	Phase	Dimensions (HxWxD)
Simplex	1	16" x 14" x 6" (41 x 36 x 15 cm)
Duplex	1	16" x 14" x 6" (41 x 36 x 15 cm)
Simplex	3	16" x 14" x 6" (41 x 36 x 15 cm)
Duplex	3	16" x 14" x 6" (41 x 36 x 15 cm)

Products may not be exactly as pictured.

Nema-4X Junction-boxes

Economy Junction Box (Field Assembled)

PVC plastic box with removable cover for use in sewage, effluent, dewatering, or corrosive environments. Box is 4" x 4"x 2" (10 x 10 x 5 cm) and is field-drilled for maximum flexibility in each installation.



Sewage/Waste Junction Boxes

NEMA-4X Junction Boxes are electrical enclosures that are watertight, dust-tight, and corrosion resistant. Boxes are completely assembled with cord seals and terminal strip for easy field wiring.



Deluxe Junction Box(Factory Assembled)

High-impact, corrosion-resistant, weatherproof thermoplastic enclosure with flexible PVC gasket and brass screws. Preassembled at the factory for convenience and ease of installation.

Qwik- Box Pump Control and Alarm

The Qwik-Box is a junction box designed for easy hookup of pumps and alarm systems. It is used in septic effluent, sewage, or dewatering applications, and requires a connection outside the building or residence. The Qwik-Box eliminates the need for junction wiring boxes inside sewage and septic tanks, and consists of UL listed components.

SPECIFICATIONS:

- No need to cut off plugs
- Sealed watertight enclosure
- Available in 115 Volt or 230 Volt design
- Corrosion-resistant PVC construction
- Easy hookup of indoor alarm with terminal strip exposed for low voltage wiring
- Rated for NEMA 4X
- Water-tight rubber cord seal for pump and switch cables
- Optional indoor tank alert alarm with silence switch and LED indicator
- Installation and wiring instructions included
- Meets NEC requirements for a disconnect

See FM1420 for further information.

Starter Kits

A starter kit is required for all single phase model 611, 621, 631, 641, and 651 pumps. A starter kit consists of the single phase capacitors and relay required to run the pump. These components are shipped loose and are installed into the pump's control panel.



Disconnect & Rail Systems

Z-Rail® Threaded Rail Systems 1-1/4" - 3" NPT Discharge Pumps

SPECIFICATIONS:

- Sewage, storm water, effluent and grinder pump systems
- For use in concrete, steel, or fiberglass tanks
- Allows for removal of pumps from ground level
- No confined space entry to service pump
- No pull rods or hold down rods
- Disconnect fitting with positive machine fit and o-ring provides a reliable seal
- Seals up to 370' TDH (160 psi) and supports a weight up to 300 lbs
- Guide rails direct the pump to and from the disconnect fitting. Systems are supplied complete with disconnect fitting, guide plate, rail guide, and upper rail support bracket
- All systems use 3/4" schedule 40 pipe rails (not included)



2" Z-Rail® unit shown.

3" & 4" Flanged Rail Systems Horizontal Discharge

SPECIFICATIONS:

- For 600 and X600 Series solids-handling pumps
- For basins of any depth
- Cast iron construction with stainless steel hardware
- Easy engagement and disengagement of pump from ground level
- Suitable for most horizontal discharge pumps having a 3" or 4" ANSI flange
- Seals up to 100' TDH (43.9 psi) and supports a weight up to 500 lbs
- Includes base elbow, pump adaptor plate, sealing gasket, rail guide and upper rail support
- All systems use 2" schedule 40 rail pipes (not included)



4" Non-sparking unit shown.

EZ Pull Quick Disconnect



The EZ-Pull quick disconnect is a convenient accessory to use when installing or removing a pump from a tank.

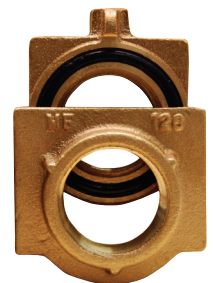
Features

- Two-piece tapered male and female connection that locks itself into place when sliding the two pieces together
- Injection molded, glass filled thermoplastic with an o-ring which provides a watertight seal even under high head conditions
- Available in 1-1/4", 1-1/2" and 2" FPT

Disconnect Only 1-1/4" - 2" Discharge

SPECIFICATIONS:

- Brass or thermoplastic
- Economical, reduces time and cost of removing pump
- Safety: keeps personnel out of pits & out of contact with contaminants
- Used for shallow systems where guide rails are not necessary (pull rod not included)





ABOUT THE ZOELLER FAMILY OF WATER SOLUTIONS

Founded in 1939, Zoeller Company is one of the oldest independently-owned professional pump manufacturers in North America. Headquartered in Louisville, Kentucky USA, Zoeller has over 800 employees worldwide and close to 600,000 sq. ft. of manufacturing facilities from our seven operations in North America and Asia.

Zoeller Company has established itself as an innovative leader in pumping equipment and water treatment systems by continuous research and development. The quality of our products is demonstrated by UL, CSA, CE, and NSF listings as well as continued growth throughout the United States, Canada, Mexico, and over 40 other countries around the globe. The company has also expanded to include five brands, which have become the foundation of Zoeller.



The original Zoeller product line now resides in Zoeller Pump Company, which offers a broad range of submersible pumps from fractional to 7-1/2 HP for residential and commercial sump, effluent, dewatering and grinding applications.



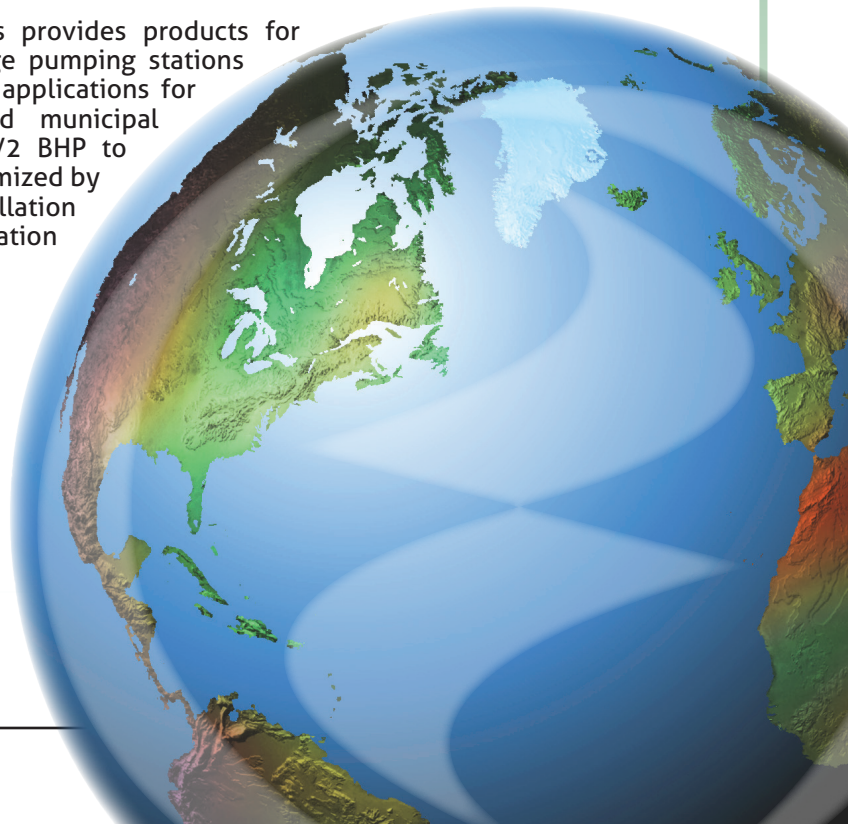
Flint & Walling, founded in 1866 in Kendallville, Indiana USA, is the only pump company in the U. S. to manufacture its own motor for jet and centrifugal pumps. This product line specializes in deep well pumps that range from 5 GPM to 1,000 GPM, as well as centrifugal, jet, booster, and submersible pumps up to 7-1/2 HP.



Founded in 1952, Wolf Pump is a manufacturer of submersible turbine pumps located in Abernathy, Texas. Wolf currently produces 4" to 8" pumps with capacities ranging from 35 to 1000 GPM. These pumps are known for their efficiency and durability in demanding water applications including irrigation, municipal water supplies, dewatering applications, dairy production, mining, the oil and gas industries, aquaculture, and more.



Zoeller Engineered Products provides products for storm water removal, sewage pumping stations and hazardous environment applications for residential, commercial and municipal markets. Available from 1/2 BHP to 100 BHP, each pump is customized by design, manufacture and installation according to exact application needs.



FM2819
0623
Supersedes
0422



3649 Cane Run Road • Louisville, KY 40211 • 502-778-2731 • 1-800-928-7867 • zoellerpumps.com