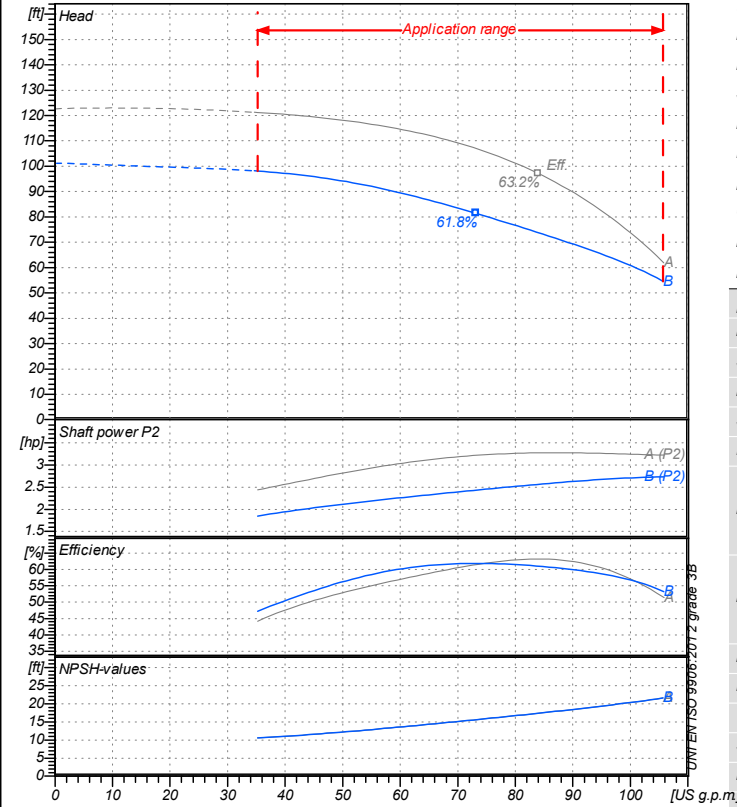


Receiver

From

 Company name
 Respons. Department
 Person in charge
 Phone number
 Fax no
 E-mail address

Operating data specification

Nominal flow	US g.p.m	0
Nominal head	ft	0
Static head	ft	0
NPSH - value of plant	ft	0
Inlet pressure	psi	1.42
Fluid	Water, pure	
Operating temperature t A	°F	68
Density at t A	lb/ft³	62.32
Kin. viscosity at t A	ft²/s	1.082E-5

Pump

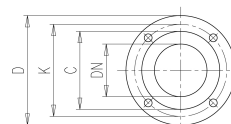
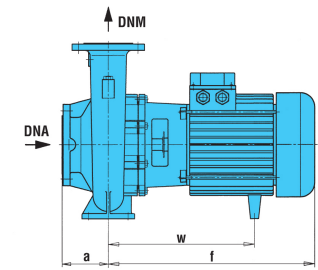
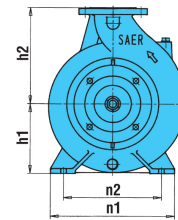
Pump name	6IR32-125B		
Size	50/32/125		
Design			
Speed rpm	3600	No of stages	1
Impeller type			
Flow	Nominal	US g.p.m	
	Max-	US g.p.m	106
	Min-	US g.p.m	35.2
Head	Nominal	ft	
	Max-	ft	98.1
	Min-	ft	54.6
Head H(Q=0)	ft 101		
NPSH 3%	ft		
Max. working pressure	psi 43.8		
Shaft power	hp		
Efficiency	%		
Max absorbed power	hp 2.7354		

Materials Pump

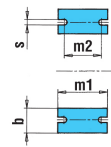
Shaft	Stainless steel AISI 431 (1.4057)
Impeller	Cast iron EN-GJL-250
Pump body	Cast iron EN-GJL-250
Seal disc	Cast iron EN-GJL-250
Gasket	Natural fiber
Mechanical seal	BVEG (Grafite/Ossido Allumina/EPDM)

Dimensions in inch

a	3 ¹ / ₈
b	1 ¹⁵ / ₁₆
DNA	1 ¹⁵ / ₁₆
DNM	1 ¹ / ₄
f	13 ⁵ / ₈
h1	4 ⁷ / ₁₆
h2	5 ¹ / ₂
m1	3 ³ / ₁₆
m2	2 ³ / ₄
n1	7 ¹ / ₂
n2	5 ¹ / ₂
s	9 ¹ / ₁₆
w	9 ¹³ / ₁₆



?n	3 ³ / ₁₆	?n	3 ³ / ₁₆
C	3 ³ / ₁₆	C	4
D	5 ¹ / ₂	D	6 ¹ / ₂
DN	1 ¹ / ₄	DN	1 ¹⁵ / ₁₆
K	3 ¹⁵ / ₁₆	K	4 ¹⁵ / ₁₆
n°	3 ¹ / ₁₆	n°	3 ¹ / ₁₆



Motor	Frame size	90 S		
Manufacturer / Type	SAER	MEC90S-2P-2.2		
Rated power	hp	2.9502	Efficiency 4/4	85 %
Electric current	A	8.1 A	Speed rpm	3600
Electric voltage	V	230V	3~	Hz 60
Starting mode	Unknown			
Degree of protection	IP 55	Insulation class	F	

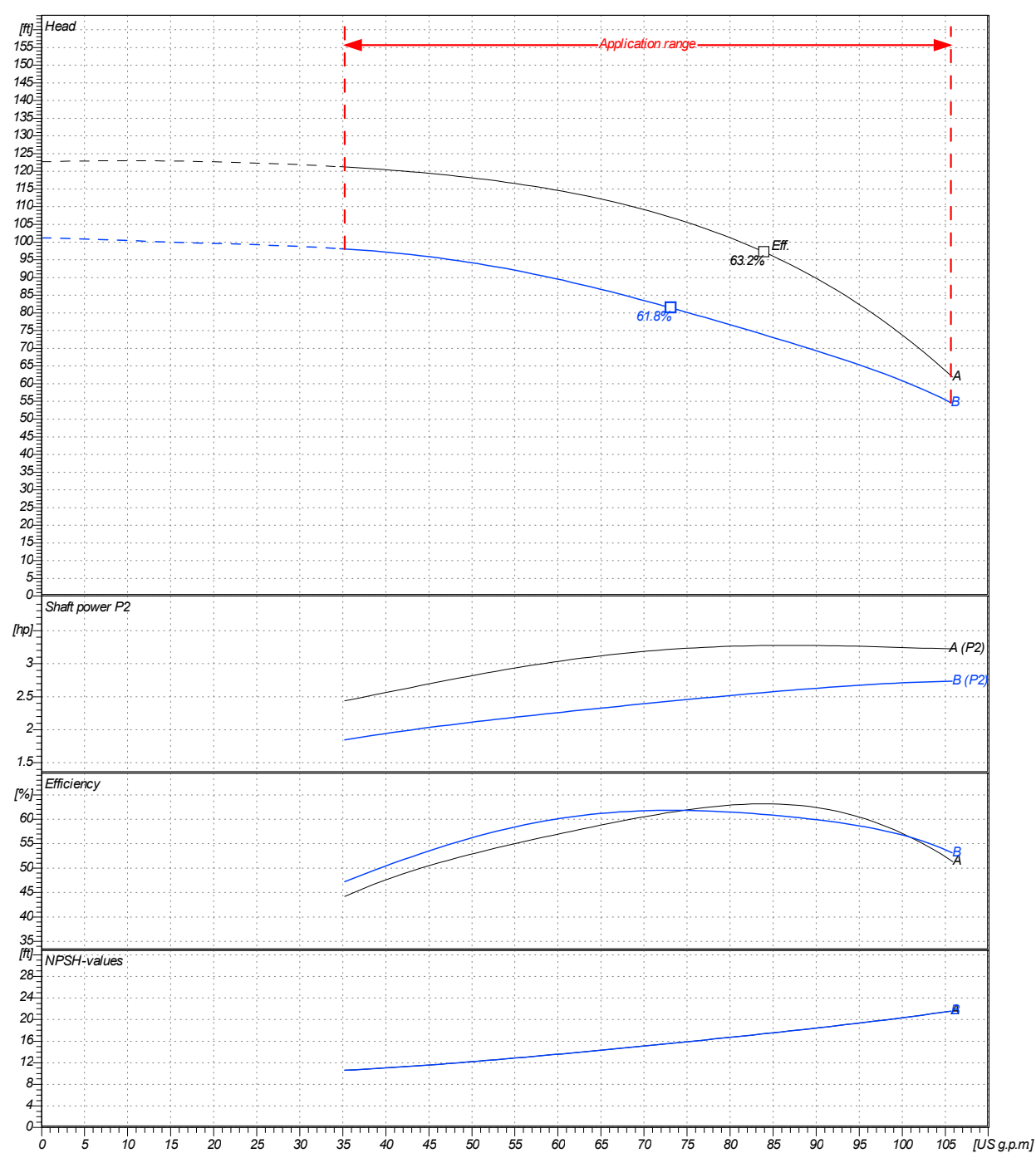
Remarks:

Project	Project ID	Created by	Created on	Last update
			2020-07-16	

Receiver	From
Company name	
Respons. Department	
Person in charge	
Phone number	
Fax no	
E-mail address	

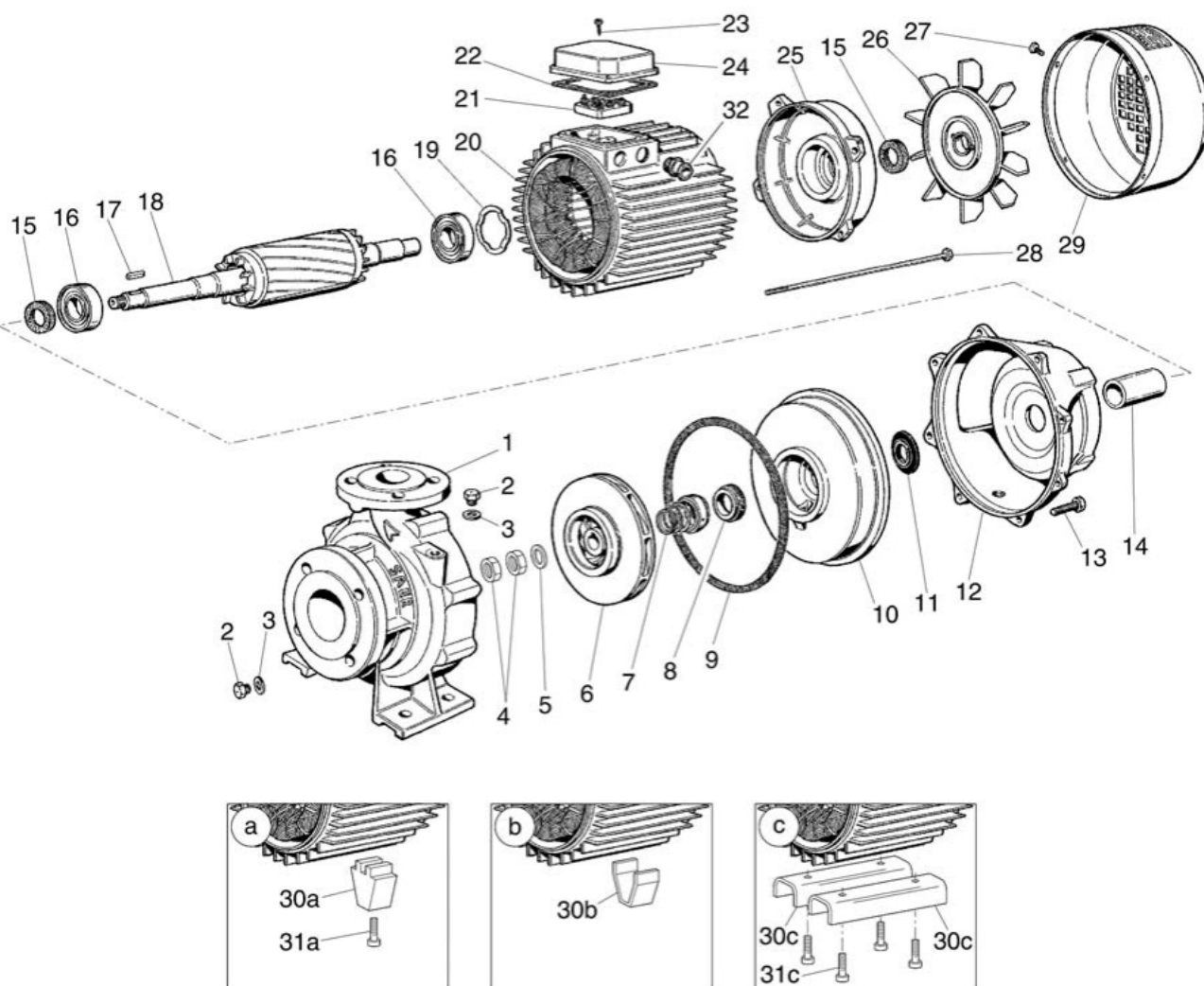
Operating area	Flow	Head	Impeller type
Operating data specification	0 US g.p.m	0 ft	Impeller construction
Pump data	US g.p.m	ft	Sense of rotation
			Clockwise from the drive end
			Outlet width
			DN 32
			Speed
			rpm 3600
			Frequency
			Hz 60 Hz

Performance data based to: Water, pure [100%]; 68°F; 62.3lb/ft³; 1.08E-5ft²/s UNI EN ISO 9906:2012 - Grade 3B



Project	Project ID	Created by	Created on	Last update
			2020-07-16	

Company name
Respons. Department
Person in charge
Phone number
Fax no
E-mail address



Project

Project ID

Created by

Created on
2020-07-16

Last update