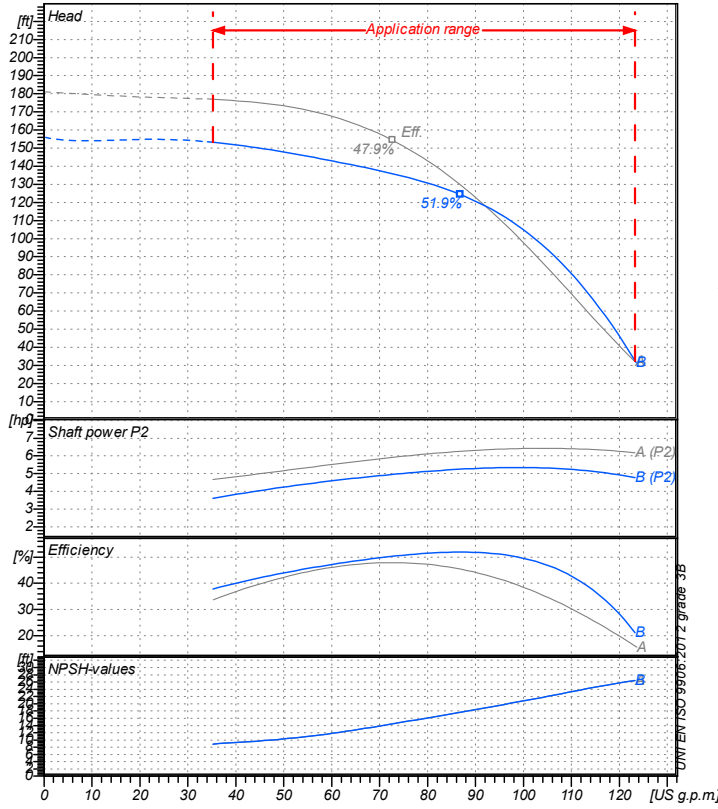


Receiver

From

 Company name
 Respons. Department
 Person in charge
 Phone number
 Fax no
 E-mail address

Operating data specification

Nominal flow	US g.p.m	0
Nominal head	ft	0
Static head	ft	0
NPSH - value of plant	ft	0
Inlet pressure	psi	1.42
Fluid	Water, pure	
Operating temperature t A	°F	68
Density at t A	lb/ft³	62.32
Kin. viscosity at t A	ft²/s	1.082E-5

Pump

Pump name	6IR32-160B		
Size	50/32/160		
Design			
Speed rpm	3600	No of stages	1
Impeller type			
Flow	Nominal	US g.p.m	
	Max-	US g.p.m	123
	Min-	US g.p.m	35.2
Head	Nominal	ft	
	Max-	ft	153
	Min-	ft	31.6
Head H(Q=0)	ft 156		
NPSH 3%	ft		
Max. working pressure	psi 67.5		
Shaft power	hp		
Efficiency	%		
Max absorbed power	hp 5.3491		

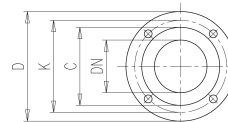
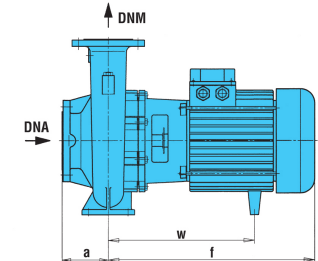
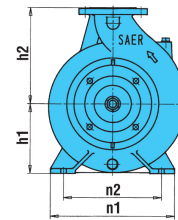
Materials Pump

Shaft	Stainless steel AISI 431 (1.4057)
Impeller	Cast iron EN-GJL-250
Pump body	Cast iron EN-GJL-250
Seal disc	Cast iron EN-GJL-250
Gasket	Natural fiber
Mechanical seal	BVEG (Grafite/Ossido Allumina/EPDM)

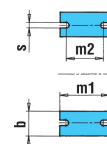
Motor	Frame size	112 M		
Manufacturer / Type	SAER	MEC112M-2P-4		
Rated power	hp	5.3641	Efficiency 4/4	85.5 %
Electric current	A	14.7 A	Speed rpm	3600
Electric voltage	V	230V	3~	Hz 60
Starting mode	Unknown			
Degree of protection	IP 55	Insulation class	F	

Dimensions in inch

- a 3¹/₈
- b 1¹⁵/₁₆
- DNA 1¹⁵/₁₆
- DNM 1¹/₄
- f 16⁵/₈
- h1 5³/₁₆
- h2 6⁵/₁₆
- m1 3³/₁₆
- m2 2³/₄
- n1 9⁷/₁₆
- n2 7¹/₂
- s 9⁹/₁₆
- w 12¹/₄



- ?n 3³/₁₆
- C 3³/₁₆
- D 5¹/₂
- DN 1¹/₄
- K 3¹⁵/₁₆
- n° 3⁷/₁₆
- ?n 3³/₄
- C 4
- D 6¹/₂
- DN 1¹⁵/₁₆
- K 4¹⁵/₁₆
- n° 3⁷/₁₆



Remarks:

Project	Project ID	Created by	Created on	Last update
			2020/07/16	

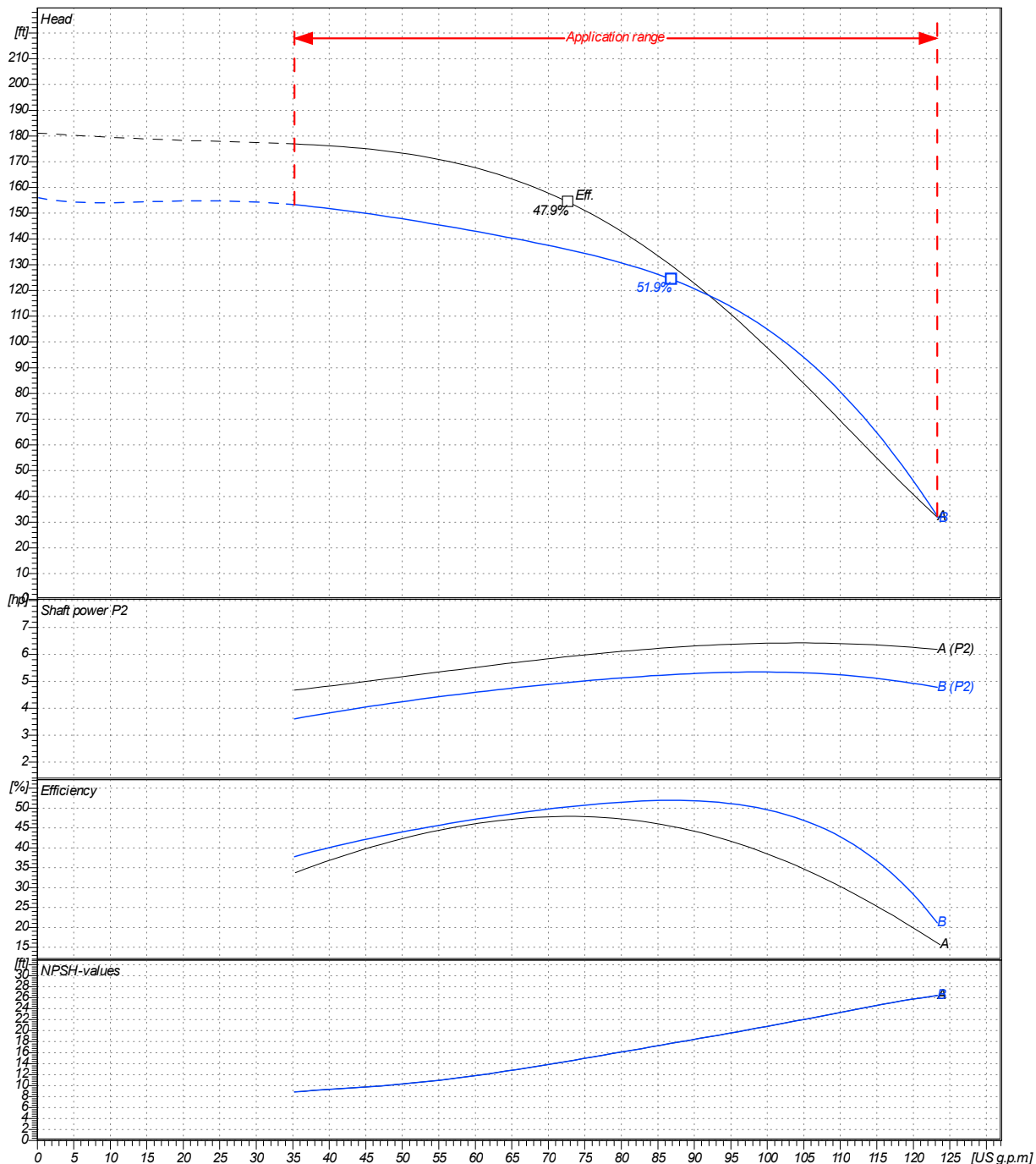
Receiver	From
Company name	
Respons. Department	
Person in charge	
Phone number	
Fax no	
E-mail address	

Operating area	Flow	Head	Impeller type
Operating data specification	0 US g.p.m	0 ft	Impeller construction
Pump data	US g.p.m	ft	Sense of rotation
			Outlet width
			DN 32
			Speed
			rpm 3600
			Frequency
			Hz 60 Hz

Flow			Head		Shaft power P2			Speed	
Min.	Max.	η Max.	H(Q=0)	η Max.	P2(Q=0)	Max.	η Max.	rpm	Hz
US g.p.m	US g.p.m	US g.p.m	ft	ft	hp	hp	hp		
35.2	123	86.9	156	124		5.35	5.25		

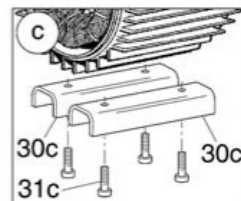
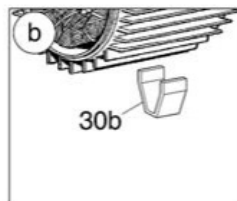
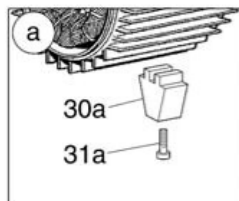
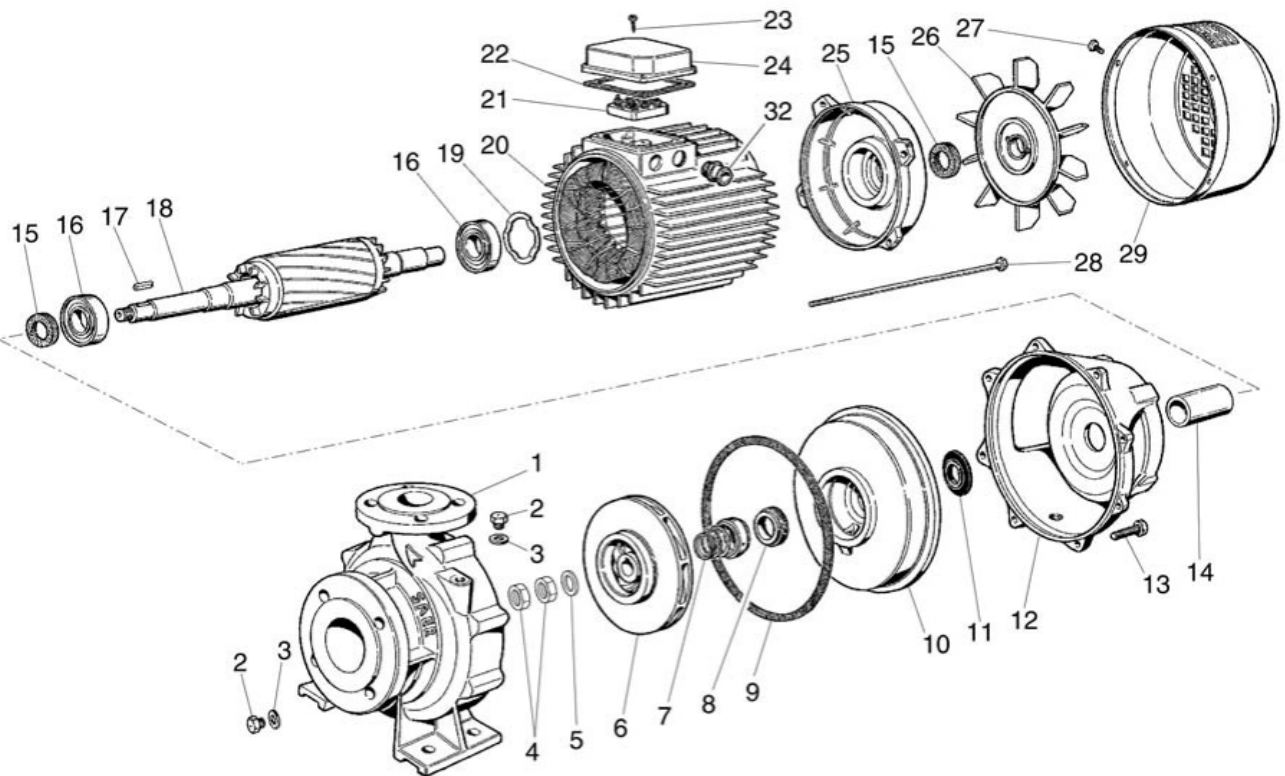
Performance data based to: Water, pure [100%]; 68°F; 62.3lb/ft³; 1.08E-5ft²/s

UNI EN ISO 9906:2012 - Grade 3B



Project	Project ID	Created by	Created on	Last update
			2020/07/16	

Company name
Respons. Department
Person in charge
Phone number
Fax no
E-mail address



Project

Project ID

Created by

Created on
2020/07/16

Last update