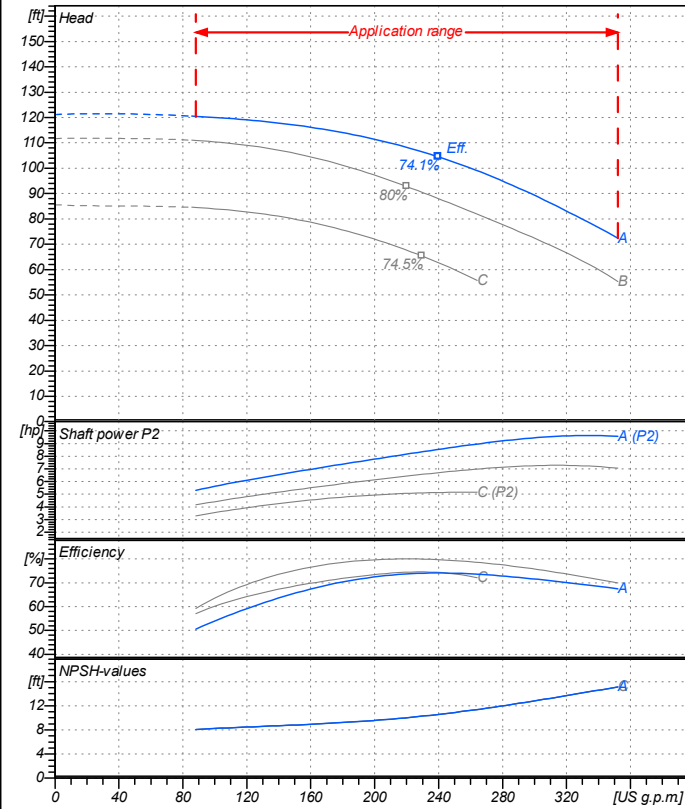


Receiver

From

 Company name
 Respons. Department
 Person in charge
 Phone number
 Fax no
 E-mail address


Operating data specification

Nominal flow	US g.p.m	0
Nominal head	ft	0
Static head	ft	0
NPSH - value of plant	ft	0
Inlet pressure	psi	1.42
Fluid	Water, pure	
Operating temperature t A	°F	68
Density at t A	lb/ft³	62.32
Kin. viscosity at t A	ft²/s	1.082E-5

Pump

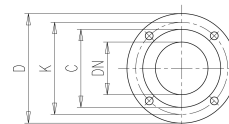
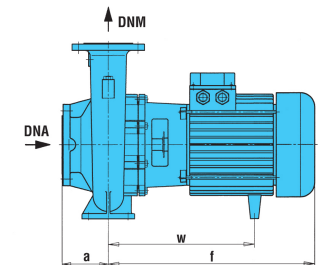
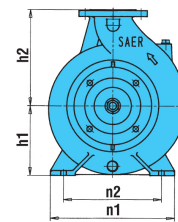
Pump name	6IR50-125A		
Size	65/50/125		
Design			
Speed rpm	3600	No of stages	1
Impeller type			
Flow	Nominal	US g.p.m	
	Max-	US g.p.m	352
	Min-	US g.p.m	88.1
Head	Nominal	ft	
	Max-	ft	120
	Min-	ft	72.5
Head H(Q=0)	ft 121		
NPSH 3%	ft		
Max. working pressure	psi 52.5		
Shaft power	hp		
Efficiency	%		
Max absorbed power	hp 9.6352		

Materials Pump

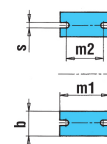
Shaft	Stainless steel AISI 431 (1.4057)
Impeller	Cast iron EN-GJL-250
Pump body	Cast iron EN-GJL-250
Seal disc	Cast iron EN-GJL-250
Gasket	Natural fiber
Mechanical seal	BVEG (Grafito/Ossido Allumina/EPDM)

Dimensions in inch

- a 3¹⁵/₁₆
- b 1¹⁵/₁₆
- DNA 2⁹/₁₆
- DNM 1¹⁵/₁₆
- f 16¹¹/₁₆
- h1 5³/₁₆
- h2 6⁵/₁₆
- m1 3¹⁵/₁₆
- m2 2³/₄
- n1 9⁷/₁₆
- n2 7¹/₂
- s 9⁹/₁₆
- w 11⁷/₈



- | | | | |
|----|---------------------------------|----|---------------------------------|
| ?n | 3/4 | ?n | 3/4 |
| C | 4 | C | 4 ¹³ / ₁₆ |
| D | 6 ¹ / ₂ | D | 7 ³ / ₁₆ |
| DN | 1 ¹⁵ / ₁₆ | DN | 2 ⁹ / ₁₆ |
| K | 4 ¹⁵ / ₁₆ | K | 5 ¹¹ / ₁₆ |
| n° | 3/16 | n° | 3/16 |



Motor	Frame size	112 M		
Manufacturer / Type	SAER	MEC112M-2P-7.5		
Rated power	hp	10.058	Efficiency 4/4	87 %
Electric current	A	24.8 A	Speed rpm	3600
Electric voltage	V	230V	3~	Hz 60
Starting mode	Unknown			
Degree of protection	IP 55	Insulation class	F	

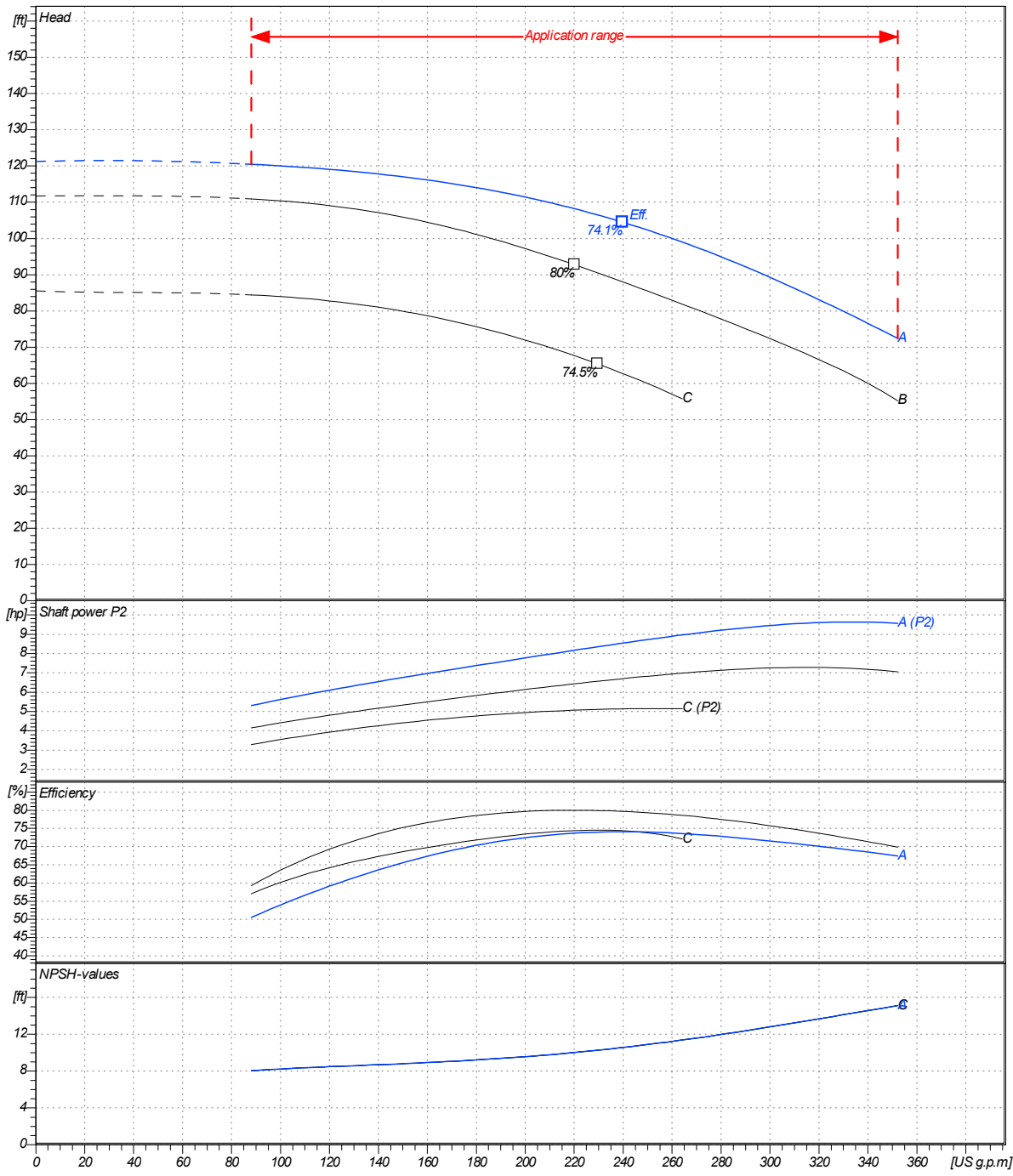
Remarks:

Project	Project ID	Created by	Created on	Last update
			2020/07/16	

Company name
 Respons. Department
 Person in charge
 Phone number
 Fax no
 E-mail address

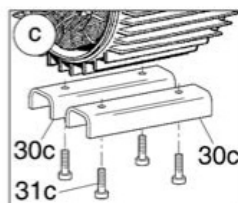
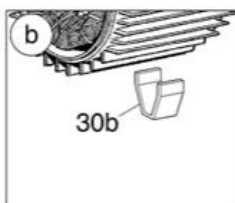
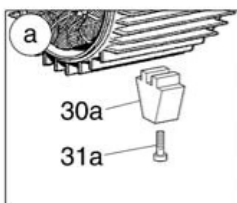
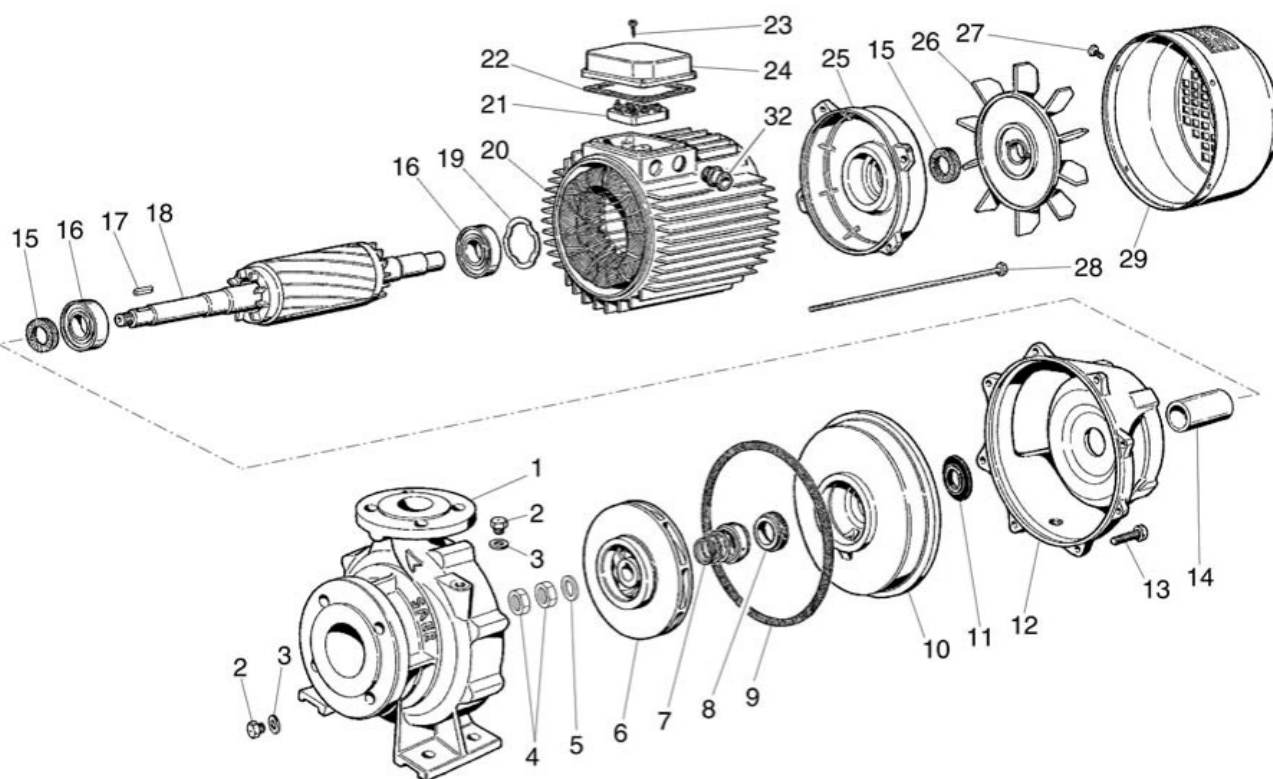
Operating area	Flow	Head	Impeller type
Operating data specification	0 US g.p.m	0 ft	Impeller construction Closed
Pump data	US g.p.m	ft	Sense of rotation Clockwise from the drive end
			Outlet width DN 50
	Shaft power P2		Speed rpm 3600
	Min. Max. η Max.	H(Q=0) η Max.	Frequency Hz 60 Hz
	US g.p.m US g.p.m US g.p.m	ft ft	
	88.1 352 240	121 105	
		P2(Q=0) Max. η Max.	
		hp hp hp	
		9.64 8.54	

Performance data based to: Water, pure [100%]; 68°F; 62.3lb/ft³; 1.08E-5ft²/s UNI EN ISO 9906:2012 - Grade 3B



Project	Project ID	Created by	Created on	Last update
			2020/07/16	

Company name
Respons. Department
Person in charge
Phone number
Fax no
E-mail address



Project

Project ID

Created by

Created on
2020/07/16

Last update