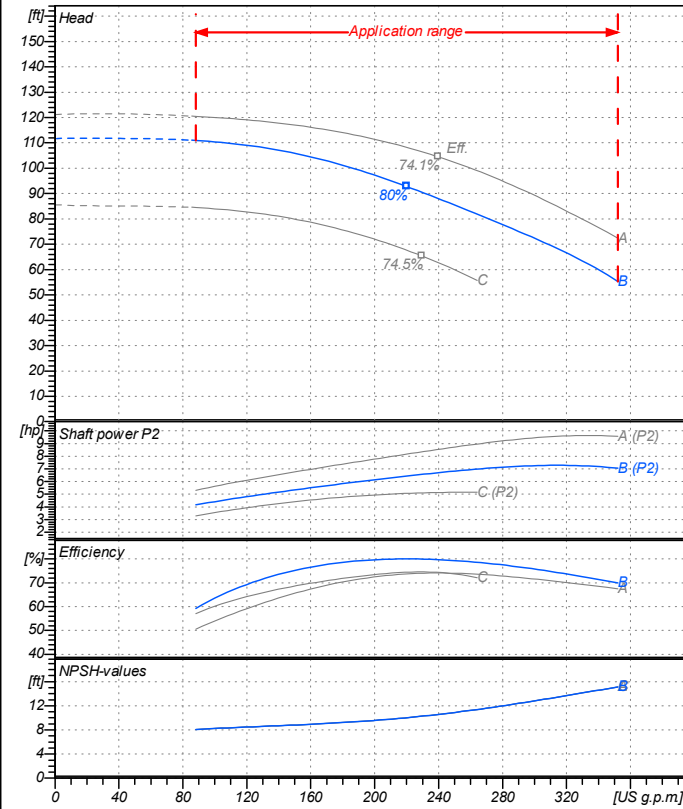


Receiver

From

 Company name  
 Respons. Department  
 Person in charge  
 Phone number  
 Fax no  
 E-mail address

**Operating data specification**

Nominal flow	US g.p.m	0
Nominal head	ft	0
Static head	ft	0
NPSH - value of plant	ft	0
Inlet pressure	psi	1.42
Fluid	Water, pure	
Operating temperature t A	°F	68
Density at t A	lb/ft³	62.32
Kin. viscosity at t A	ft²/s	1.082E-5

**Pump**

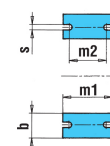
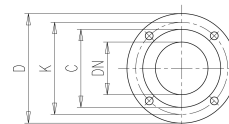
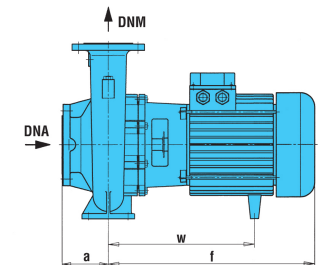
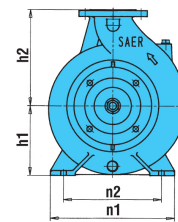
Pump name	6IR50-125B		
Size	65/50/125		
Design			
Speed rpm	3600	No of stages	1
Impeller type			
Flow	Nominal	US g.p.m	
	Max-	US g.p.m	352
	Min-	US g.p.m	88.1
Head	Nominal	ft	
	Max-	ft	111
	Min-	ft	55.2
Head H(Q=0)	ft 112		
NPSH 3%	ft		
Max. working pressure	psi 48.4		
Shaft power	hp		
Efficiency	%		
Max absorbed power	hp 7.2815		

**Materials Pump**

Shaft	Stainless steel AISI 431 (1.4057)
Impeller	Cast iron EN-GJL-250
Pump body	Cast iron EN-GJL-250
Seal disc	Cast iron EN-GJL-250
Gasket	Natural fiber
Mechanical seal	BVEG (Grafito/Ossido Allumina/EPDM)

**Dimensions in inch**

a	3 <sup>15</sup> / <sub>16</sub>
b	1 <sup>15</sup> / <sub>16</sub>
DNA	2 <sup>9</sup> / <sub>16</sub>
DNM	1 <sup>15</sup> / <sub>16</sub>
f	16 <sup>11</sup> / <sub>16</sub>
h1	5 <sup>3</sup> / <sub>16</sub>
h2	6 <sup>5</sup> / <sub>16</sub>
m1	3 <sup>15</sup> / <sub>16</sub>
m2	2 <sup>3</sup> / <sub>4</sub>
n1	9 <sup>7</sup> / <sub>16</sub>
n2	7 <sup>1</sup> / <sub>2</sub>
s	9 <sup>9</sup> / <sub>16</sub>
w	11 <sup>7</sup> / <sub>8</sub>



?n	3/4	?n	3/4
C	4	C	4 <sup>13</sup> / <sub>16</sub>
D	6 <sup>1</sup> / <sub>2</sub>	D	7 <sup>3</sup> / <sub>16</sub>
DN	1 <sup>15</sup> / <sub>16</sub>	DN	2 <sup>9</sup> / <sub>16</sub>
K	4 <sup>15</sup> / <sub>16</sub>	K	5 <sup>11</sup> / <sub>16</sub>
n°	3/16	n°	3/16

<b>Motor</b>	Frame size	112 M		
Manufacturer / Type	SAER	MEC112M-2P-5.5		
Rated power	hp	7.3756	Efficiency 4/4	86 %
Electric current	A	23 A	Speed rpm	3600
Electric voltage	V	230V	3~	Hz 60
Starting mode	Unknown			
Degree of protection	IP 55	Insulation class	F	

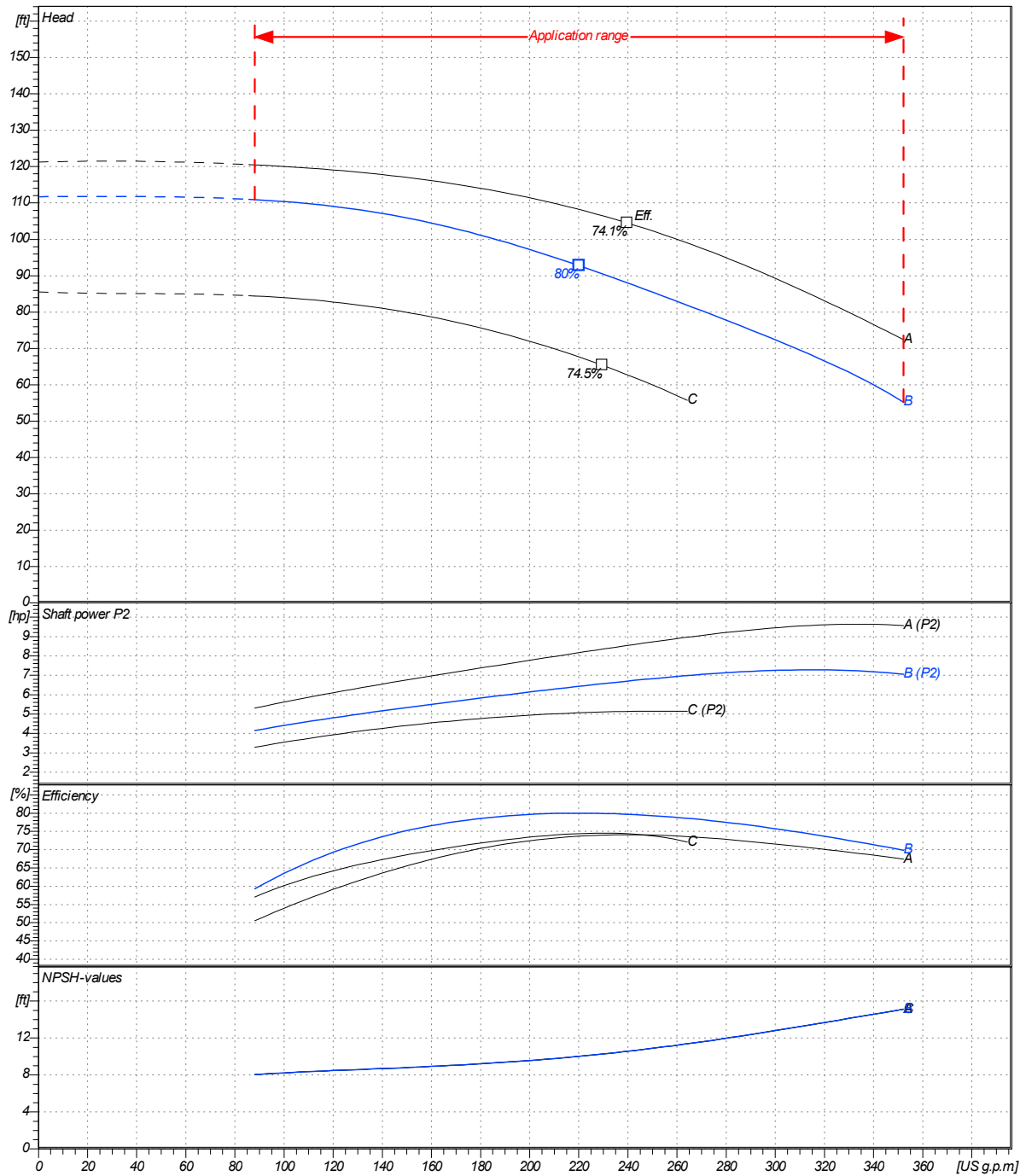
Remarks:

Project	Project ID	Created by	Created on	Last update
			2020/07/16	

<b>Receiver</b>	<b>From</b>
Company name	
Respons. Department	
Person in charge	
Phone number	
Fax no	
E-mail address	

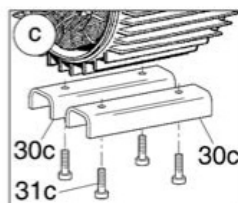
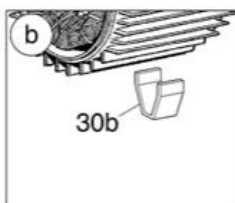
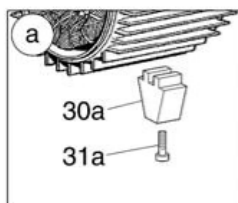
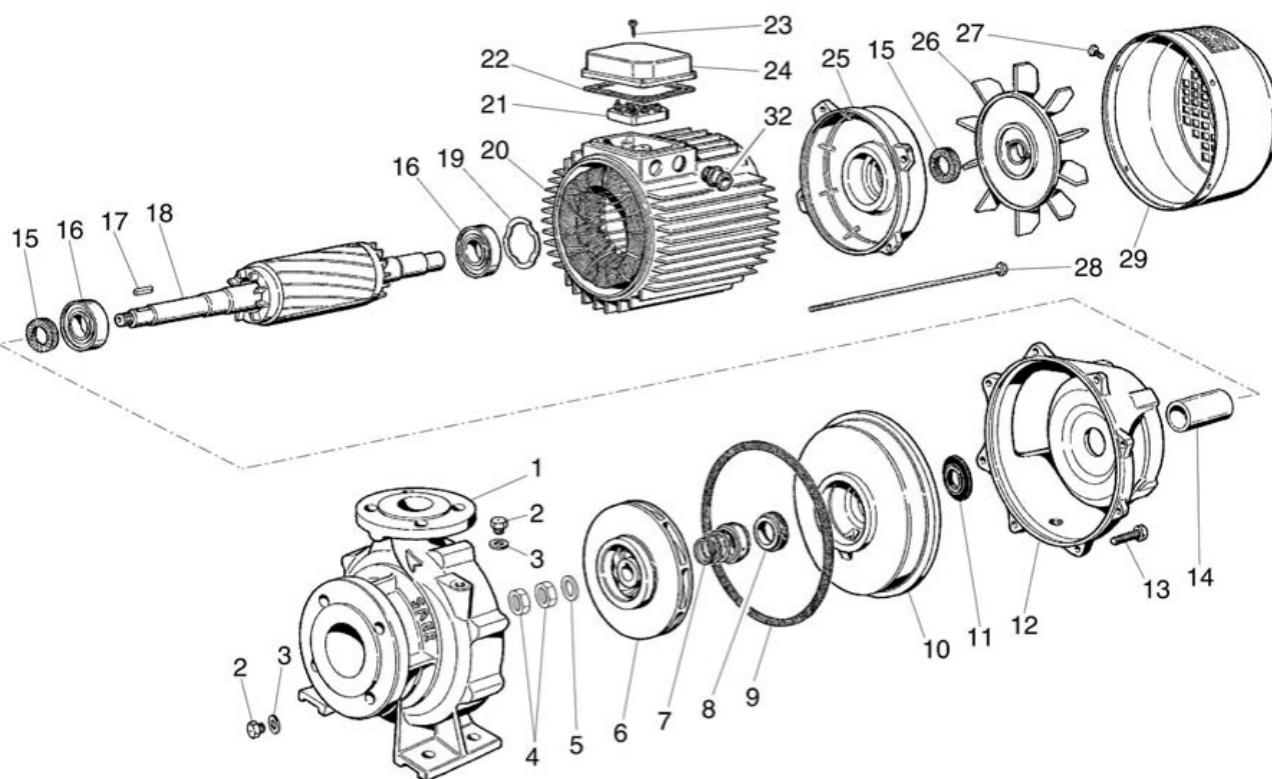
Operating area	Flow	Head	Impeller type
Operating data specification	0 US g.p.m	0 ft	Impeller construction
Pump data	US g.p.m	ft	Sense of rotation
			Outlet width
			DN 50
			Speed rpm
			3600
			Frequency Hz
			60 Hz

Performance data based to: Water, pure [100%]; 68°F; 62.3lb/ft³; 1.08E-5ft²/s UNI EN ISO 9906:2012 - Grade 3B



Project	Project ID	Created by	Created on <b>2020/07/16</b>	Last update
---------	------------	------------	---------------------------------	-------------

Company name  
Respons. Department  
Person in charge  
Phone number  
Fax no  
E-mail address



Project

Project ID

Created by

Created on  
2020/07/16

Last update