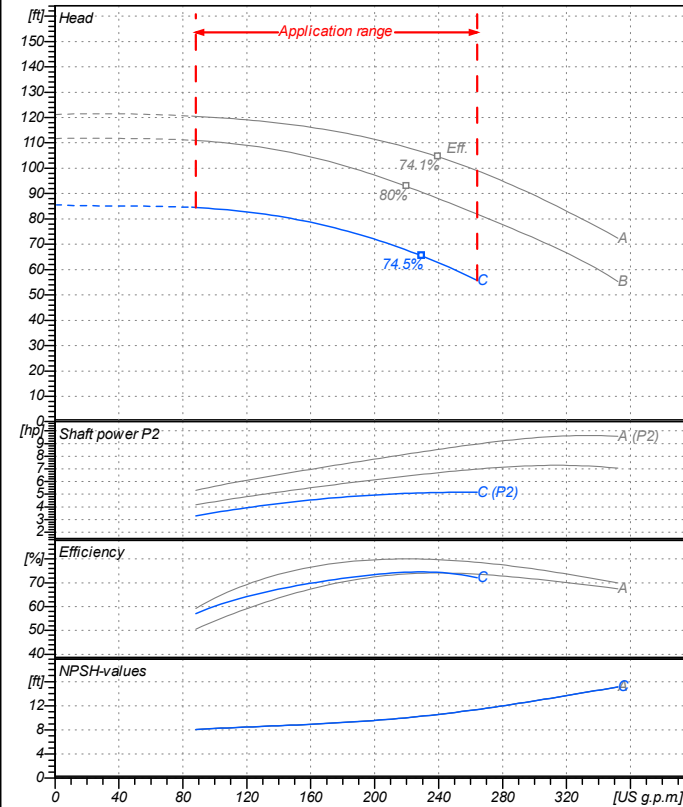


Receiver

From

 Company name
 Respons. Department
 Person in charge
 Phone number
 Fax no
 E-mail address


Operating data specification

Nominal flow	US g.p.m.	0
Nominal head	ft	0
Static head	ft	0
NPSH - value of plant	ft	0
Inlet pressure	psi	1.42
Fluid	Water, pure	
Operating temperature t A	°F	68
Density at t A	lb/ft³	62.32
Kin. viscosity at t A	ft²/s	1.082E-5

Pump

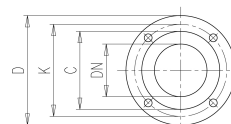
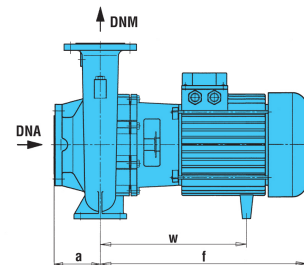
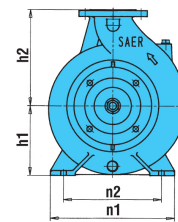
Pump name	6IR50-125C		
Size	65/50/125		
Design			
Speed rpm	3600	No of stages	1
Impeller type			
Flow	Nominal	US g.p.m.	
	Max-	US g.p.m.	264
	Min-	US g.p.m.	88.1
Head	Nominal	ft	
	Max-	ft	84.4
	Min-	ft	55.8
Head H(Q=0)			ft 85.6
NPSH 3%			ft
Max. working pressure			psi 37
Shaft power			hp
Efficiency			%
Max absorbed power			hp 5.1537

Materials Pump

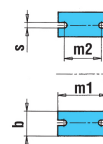
Shaft	Stainless steel AISI 431 (1.4057)
Impeller	Cast iron EN-GJL-250
Pump body	Cast iron EN-GJL-250
Seal disc	Cast iron EN-GJL-250
Gasket	Natural fiber
Mechanical seal	BVEG (Grafite/Ossido Allumina/EPDM)

Dimensions in inch

a	3 ¹⁵ / ₁₆
b	1 ¹⁵ / ₁₆
DNA	2 ⁹ / ₁₆
DNM	1 ¹⁵ / ₁₆
f	15 ¹ / ₂
h1	5 ³ / ₁₆
h2	6 ⁵ / ₁₆
m1	3 ¹⁵ / ₁₆
m2	2 ³ / ₄
n1	9 ⁷ / ₁₆
n2	7 ¹ / ₂
s	9 ⁹ / ₁₆
w	10 ¹¹ / ₁₆



?n	3/4	?n	3/4
C	4	C	4 ¹³ / ₁₆
D	6 ¹ / ₂	D	7 ³ / ₁₆
DN	1 ¹⁵ / ₁₆	DN	2 ⁹ / ₁₆
K	4 ¹⁵ / ₁₆	K	5 ¹¹ / ₁₆
n°	3/16	n°	3/16



Motor	Frame size	112 M		
Manufacturer / Type	SAER	MEC112M-2P-4		
Rated power	hp	5.3641	Efficiency 4/4	85.5 %
Electric current	A	14.7 A	Speed rpm	3600
Electric voltage	V	230V	3~	Hz 60
Starting mode	Unknown			
Degree of protection	IP 55	Insulation class	F	

Remarks:

Project	Project ID	Created by	Created on	Last update
			2020/07/16	

Receiver

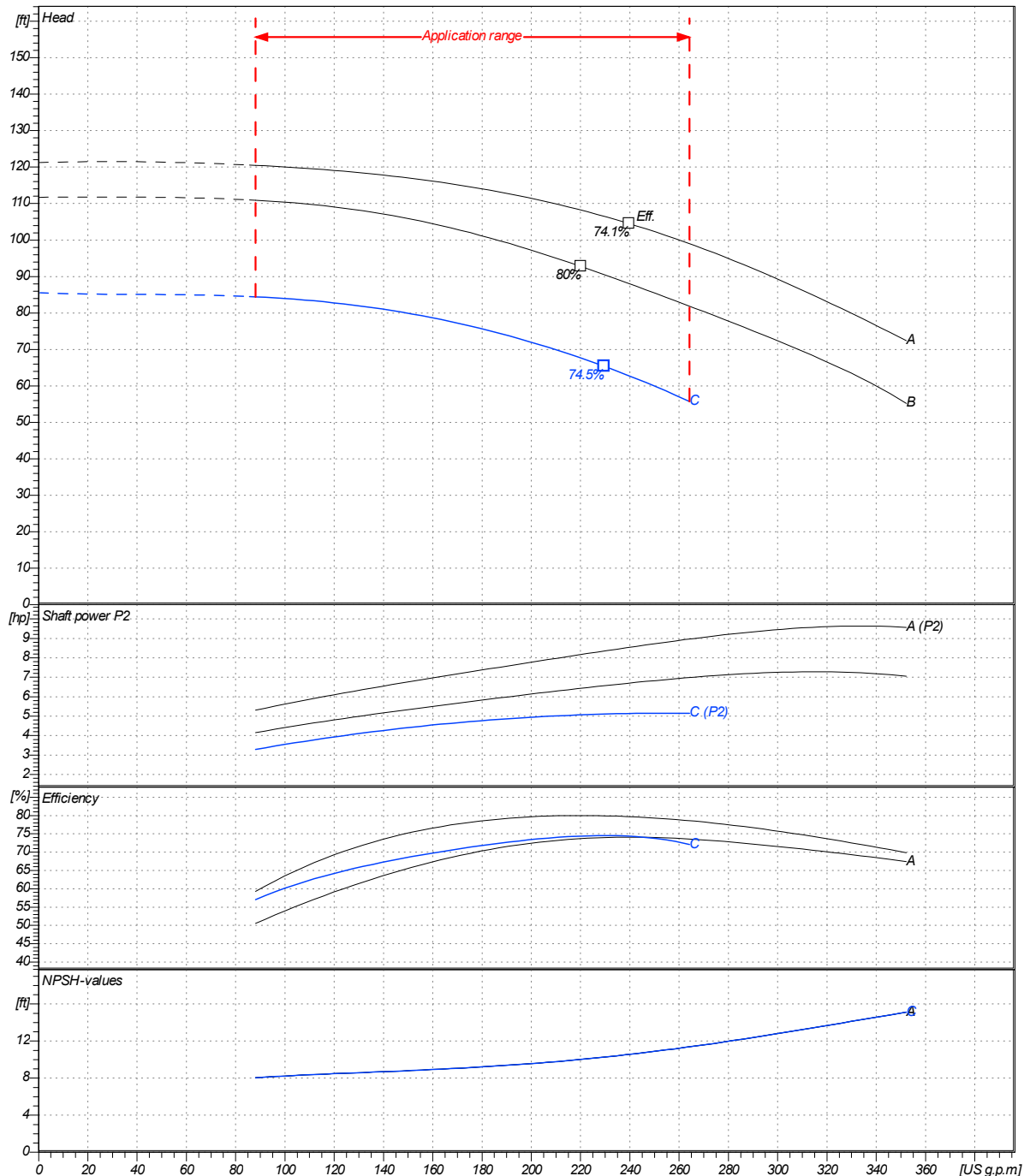
From

 Company name
 Respons. Department
 Person in charge
 Phone number
 Fax no
 E-mail address

Operating area	Flow	Head	Impeller type
Operating data specification	0 US g.p.m	0 ft	Impeller construction Closed
Pump data	US g.p.m	ft	Sense of rotation Clockwise from the drive end
			Outlet width DN 50
	Flow	Head	Shaft power P2
	Min. Max. η Max.	H(Q=0) η Max.	P2(Q=0) Max. η Max.
	US g.p.m US g.p.m US g.p.m	ft ft	hp hp hp
	88.1 264 230	85.6 65.4	5.15 5.11
			Speed rpm 3600
			Frequency Hz 60 Hz

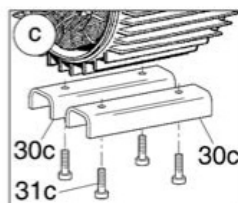
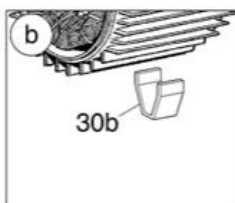
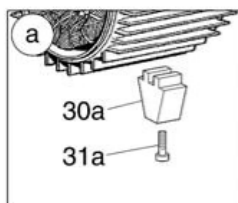
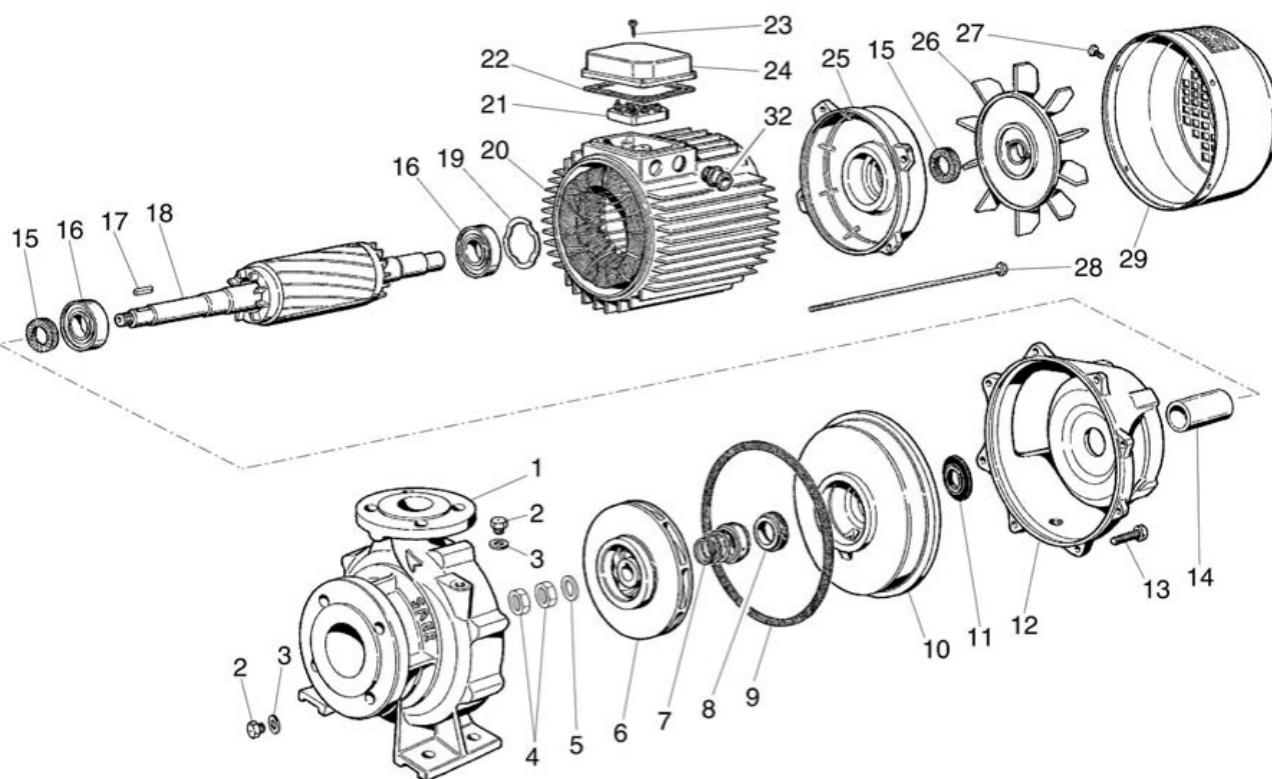
 Performance data based to: Water, pure [100%]; 68°F; 62.3lb/ft³; 1.08E-5ft²/s

UNI EN ISO 9906:2012 - Grade 3B



Project	Project ID	Created by	Created on 2020/07/16	Last update
---------	------------	------------	---------------------------------	-------------

Company name
Respons. Department
Person in charge
Phone number
Fax no
E-mail address



Project

Project ID

Created by

Created on
2020/07/16

Last update