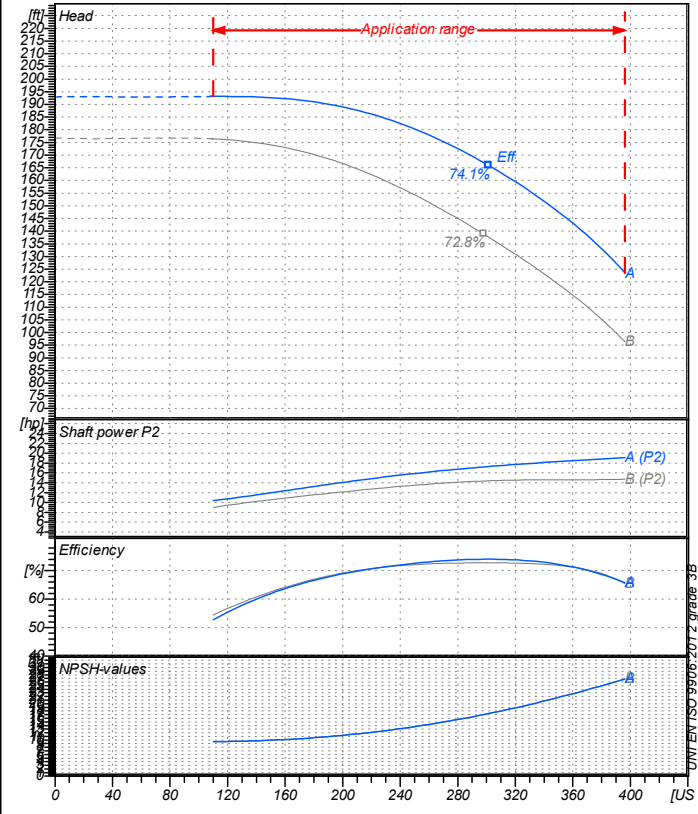


Receiver

From

Company name  
Respons. Department  
Person in charge  
Phone number  
Fax no  
E-mail address

**Operating data specification**

Nominal flow	US g.p.m	0
Nominal head	ft	0
Static head	ft	0
NPSH - value of plant	ft	0
Inlet pressure	psi	1.42
Fluid	Water, pure	
Operating temperature t A	°F	68
Density at t A	lb/ft³	62.32
Kin. viscosity at t A	ft²/s	1.082E-5

**Pump**

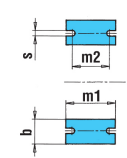
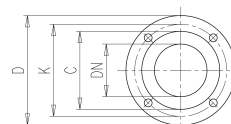
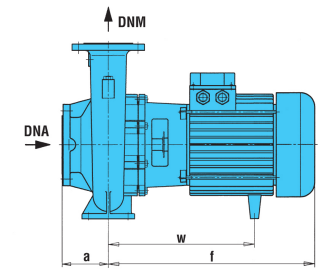
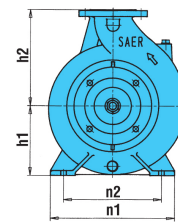
Pump name	6IR50-160A		
Size	65/50/160		
Design			
Speed rpm	3600	No of stages	1
Impeller type			
Flow	Nominal	US g.p.m	
	Max-	US g.p.m	396
	Min-	US g.p.m	110
Head	Nominal	ft	
	Max-	ft	193
	Min-	ft	123
Head H(Q=0)	ft 193		
NPSH 3%	ft		
Max. working pressure	psi 83.5		
Shaft power	hp		
Efficiency	%		
Max absorbed power	hp 19.081		

**Materials Pump**

Shaft	Stainless steel AISI 431 (1.4057)
Impeller	Cast iron EN-GJL-250
Pump body	Cast iron EN-GJL-250
Seal disc	Cast iron EN-GJL-250
Gasket	Natural fiber
Mechanical seal	BVEG (Grafito/Ossido Allumina/EPDM)

**Dimensions in inch**

- a 3<sup>15</sup>/<sub>16</sub> z1 10<sup>3</sup>/<sub>16</sub>
- b 1<sup>15</sup>/<sub>16</sub> z2 8<sup>1</sup>/<sub>2</sub>
- d 1/2
- DNA 2<sup>9</sup>/<sub>16</sub>
- DNM 1<sup>15</sup>/<sub>16</sub>
- f 22<sup>3</sup>/<sub>16</sub>
- h1 6<sup>5</sup>/<sub>16</sub>
- h2 7<sup>1</sup>/<sub>16</sub>
- m1 3<sup>15</sup>/<sub>16</sub>
- m2 2<sup>3</sup>/<sub>4</sub>
- n1 10<sup>7</sup>/<sub>16</sub>
- n2 8<sup>3</sup>/<sub>8</sub>
- s 9<sup>9</sup>/<sub>16</sub>
- w 7<sup>1</sup>/<sub>4</sub>
- x1 12<sup>5</sup>/<sub>8</sub>
- x2 11



- ?n 3/4 ?n 3/4
- C 4 C 4<sup>13</sup>/<sub>16</sub>
- D 6<sup>1</sup>/<sub>2</sub> D 7<sup>3</sup>/<sub>16</sub>
- DN 1<sup>15</sup>/<sub>16</sub> DN 2<sup>9</sup>/<sub>16</sub>
- K 4<sup>15</sup>/<sub>16</sub> K 5<sup>11</sup>/<sub>16</sub>
- n° 3/16 n° 3/16

<b>Motor</b>	Frame size	132 M		
Manufacturer / Type	SAER	MEC132M-2P-15		
Rated power	hp	20.115	Efficiency 4/4	88 %
Electric current	A	50 A	Speed rpm	3600
Electric voltage	V	230V	3~	Hz 60
Starting mode	Unknown			
Degree of protection	IP 55	Insulation class	F	

Remarks:

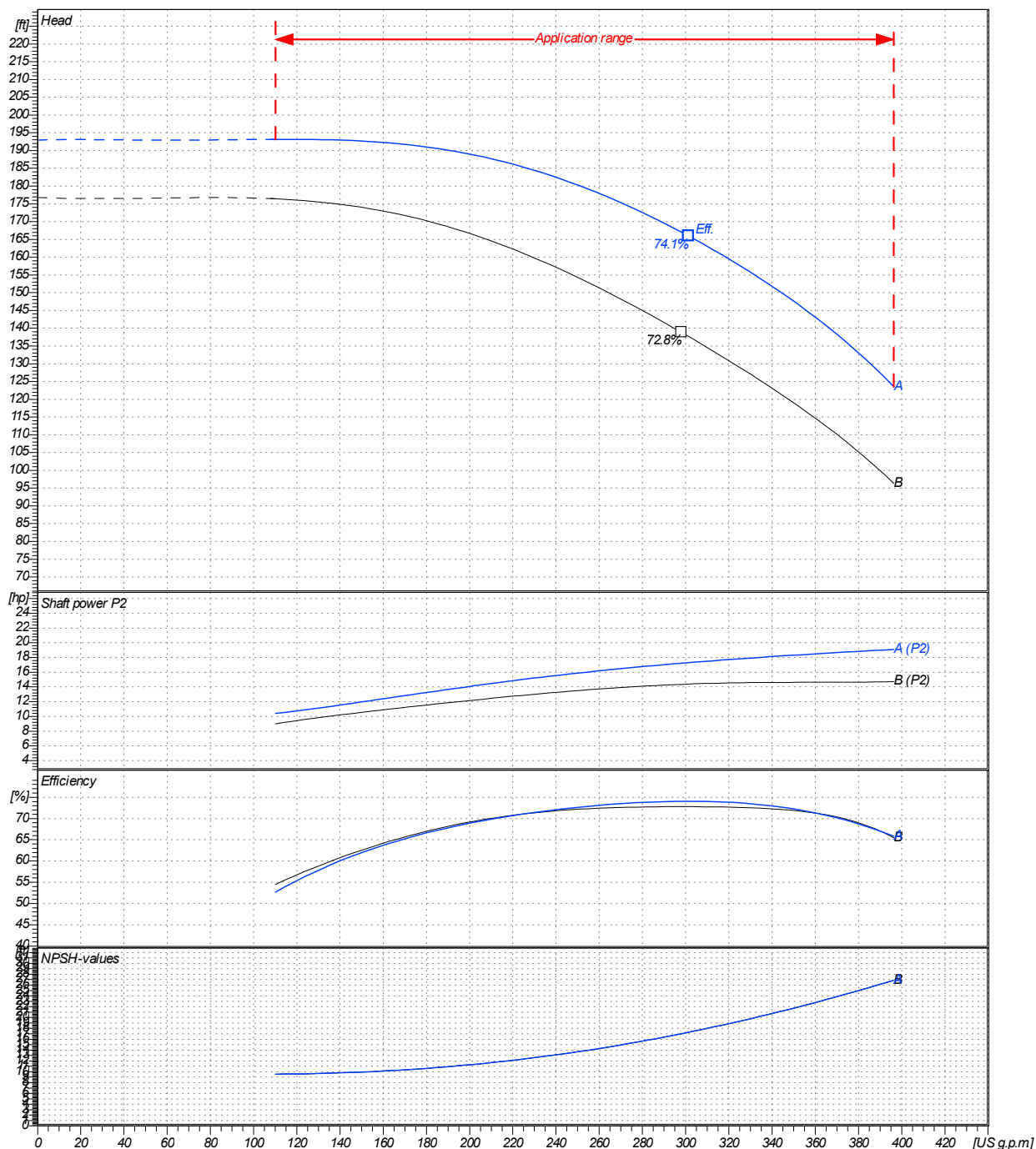
Project	Project ID	Created by	Created on	Last update
			2020/07/16	

<b>Receiver</b>	<b>From</b>
Company name	_____
Respons. Department	_____
Person in charge	_____
Phone number	_____
Fax no	_____
E-mail address	_____

Operating area	Flow	Head	Impeller type
Operating data specification	0 US g.p.m	0 ft	Impeller construction Closed
Pump data	US g.p.m	ft	Sense of rotation Clockwise from the drive end
			Outlet width DN 50
	Flow	Head	Shaft power P2
	Min. Max. $\eta$ Max.	H(Q=0) $\eta$ Max.	P2(Q=0) Max. $\eta$ Max.
	US g.p.m US g.p.m US g.p.m	ft ft	hp hp hp
	110 396 301	193 166	19.1 17.3
			Speed rpm 3600
			Frequency Hz 60 Hz

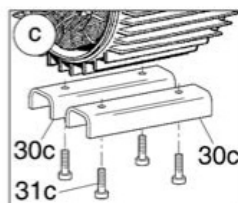
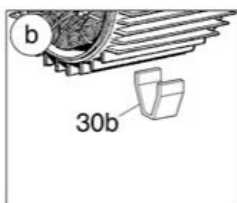
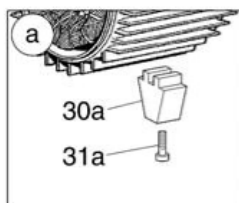
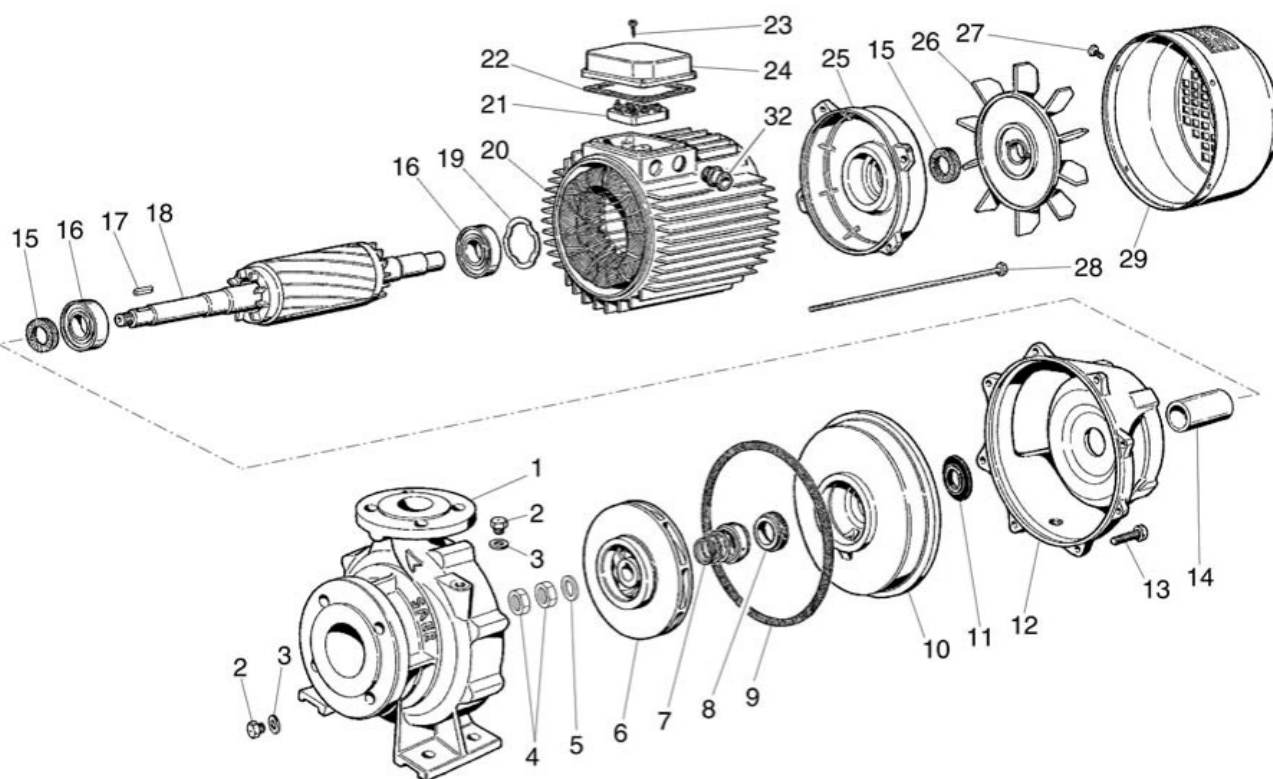
 Performance data based to: Water, pure [100%]; 68°F; 62.3lb/ft<sup>3</sup>; 1.08E-5ft<sup>2</sup>/s

UNI EN ISO 9906:2012 - Grade 3B



Project	Project ID	Created by	Created on <b>2020/07/16</b>	Last update
---------	------------	------------	---------------------------------	-------------

Company name  
Respons. Department  
Person in charge  
Phone number  
Fax no  
E-mail address



Project

Project ID

Created by

Created on  
**2020/07/16**

Last update