

Receiver

From

Company name

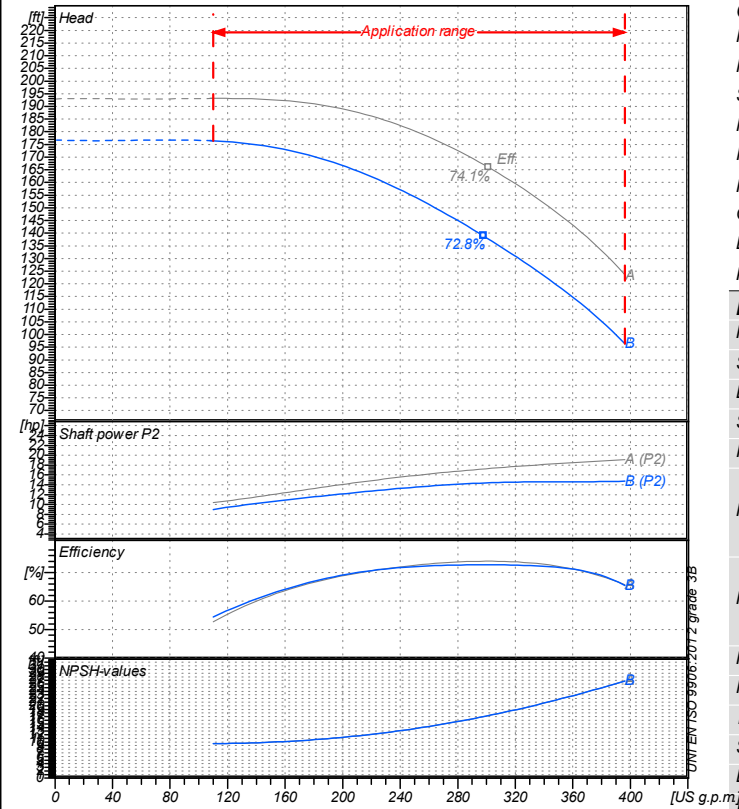
Respons. Department

Person in charge

Phone number

Fax no

E-mail address

**Operating data specification**

Nominal flow	US g.p.m.	0
Nominal head	ft	0
Static head	ft	0
NPSH - value of plant	ft	0
Inlet pressure	psi	1.42
Fluid	Water, pure	
Operating temperature t A	°F	68
Density at t A	lb/ft³	62.32
Kin. viscosity at t A	ft²/s	1.082E-5

Pump

Pump name	6IR50-160B		
Size	65/50/160		
Design			
Speed rpm	3600	No of stages	1
Impeller type			
Flow	Nominal	US g.p.m.	
	Max-	US g.p.m.	396
	Min-	US g.p.m.	110
Head	Nominal	ft	
	Max-	ft	176
	Min-	ft	96.4
Head H(Q=0)	ft	177	
NPSH 3%	ft		
Max. working pressure	psi	76.5	
Shaft power	hp		
Efficiency	%		
Max absorbed power	hp	14.731	

Materials Pump

Shaft	Stainless steel AISI 431 (1.4057)
Impeller	Cast iron EN-GJL-250
Pump body	Cast iron EN-GJL-250
Seal disc	Cast iron EN-GJL-250
Gasket	Natural fiber
Mechanical seal	BVEG (Grafito/Ossido Allumina/EPDM)

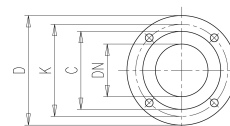
Motor	Frame size	132 S		
Manufacturer / Type	SAER	MEC132S-2P-11		
Rated power	hp	14.751	Efficiency 4/4	87.5 %
Electric current	A	20 A	Speed rpm	3600
Electric voltage	V	460V	3~	Hz 60
Starting mode	Unknown			
Degree of protection	IP 55	Insulation class	F	

Remarks:

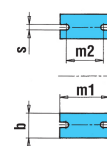
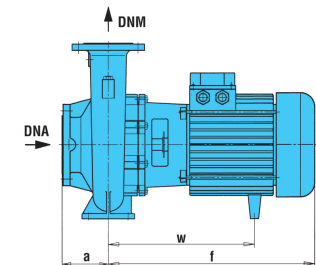
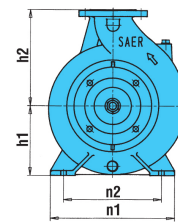
Project	Project ID	Created by	Created on	Last update
			2020/07/16	

Dimensions in inch

a	3 ¹⁵ / ₁₆	z1	10 ³ / ₁₆
b	1 ¹⁵ / ₁₆	z2	8 ¹ / ₂
d	1/2		
DNA	2 ⁹ / ₁₆		
DNM	1 ¹⁵ / ₁₆		
f	19 ¹ / ₈		
h1	6 ⁵ / ₁₆		
h2	7 ¹ / ₁₆		
m1	3 ¹⁵ / ₁₆		
m2	2 ³ / ₄		
n1	10 ⁷ / ₁₆		
n2	8 ³ / ₈		
s	9 ¹ / ₁₆		
w	4 ¹⁵ / ₁₆		
x1	12 ⁵ / ₈		
x2	11		



?n	3/4	?n	3/4
C	4	C	4 ¹³ / ₁₆
D	6 ¹ / ₂	D	7 ³ / ₁₆
DN	1 ¹⁵ / ₁₆	DN	2 ⁹ / ₁₆
K	4 ¹⁵ / ₁₆	K	5 ¹¹ / ₁₆
n°	3/16	n°	3/16

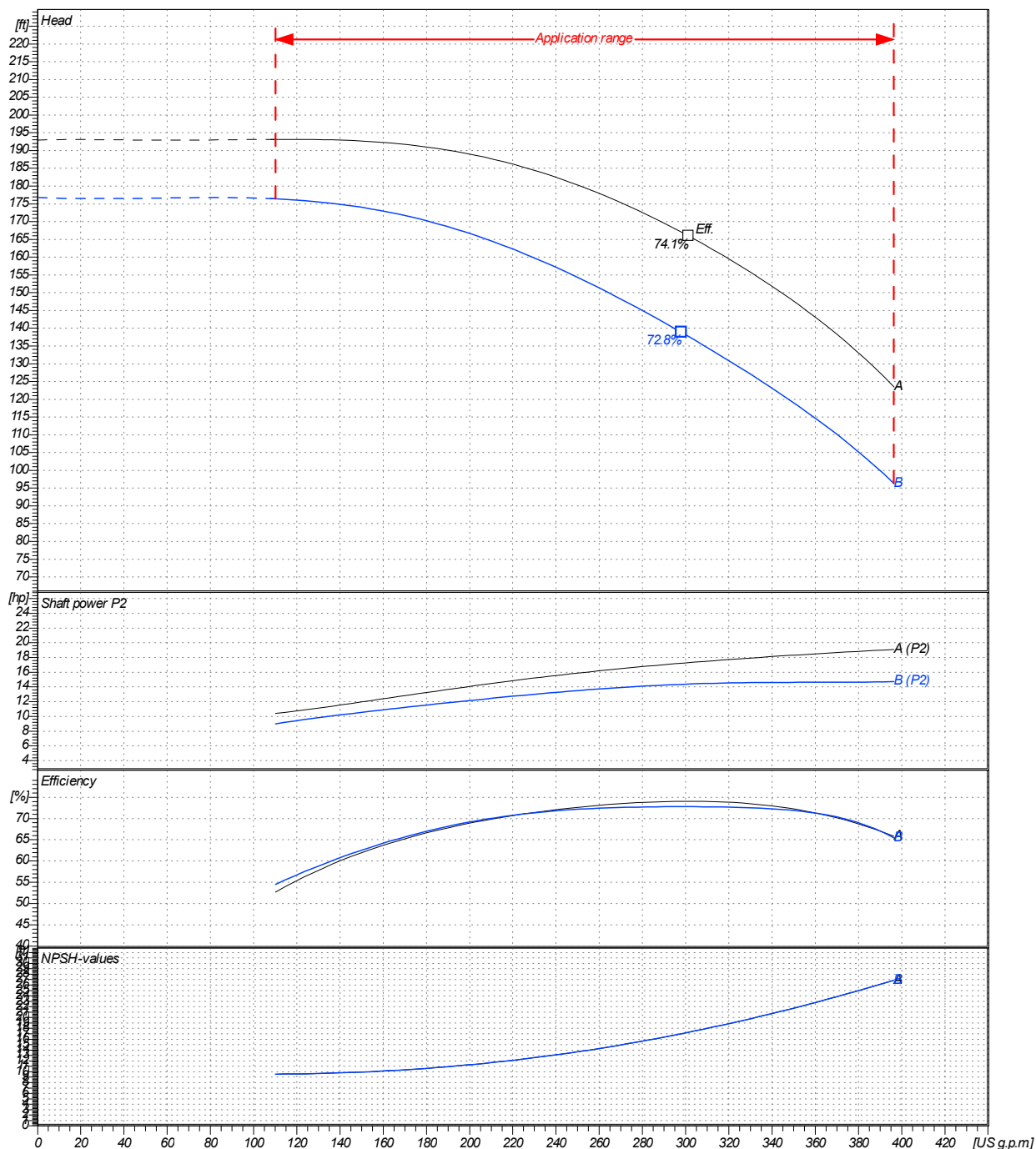


Receiver	From
Company name	
Respons. Department	
Person in charge	
Phone number	
Fax no	
E-mail address	

Operating area	Flow	Head	Impeller type
Operating data specification	0 US g.p.m	0 ft	Impeller construction Closed
Pump data	US g.p.m	ft	Sense of rotation Clockwise from the drive end
			Outlet width DN 50
	Flow	Head	Shaft power P2
	Min. Max. η Max.	H(Q=0) η Max.	P2(Q=0) Max. η Max.
	US g.p.m US g.p.m US g.p.m	ft ft	hp hp hp
	110 396 298	177 139	14.7 14.4
			Speed rpm 3600
			Frequency Hz 60 Hz

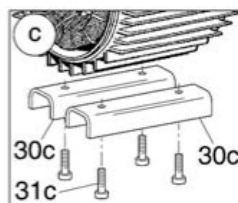
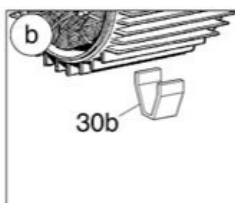
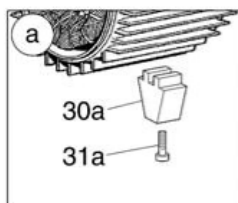
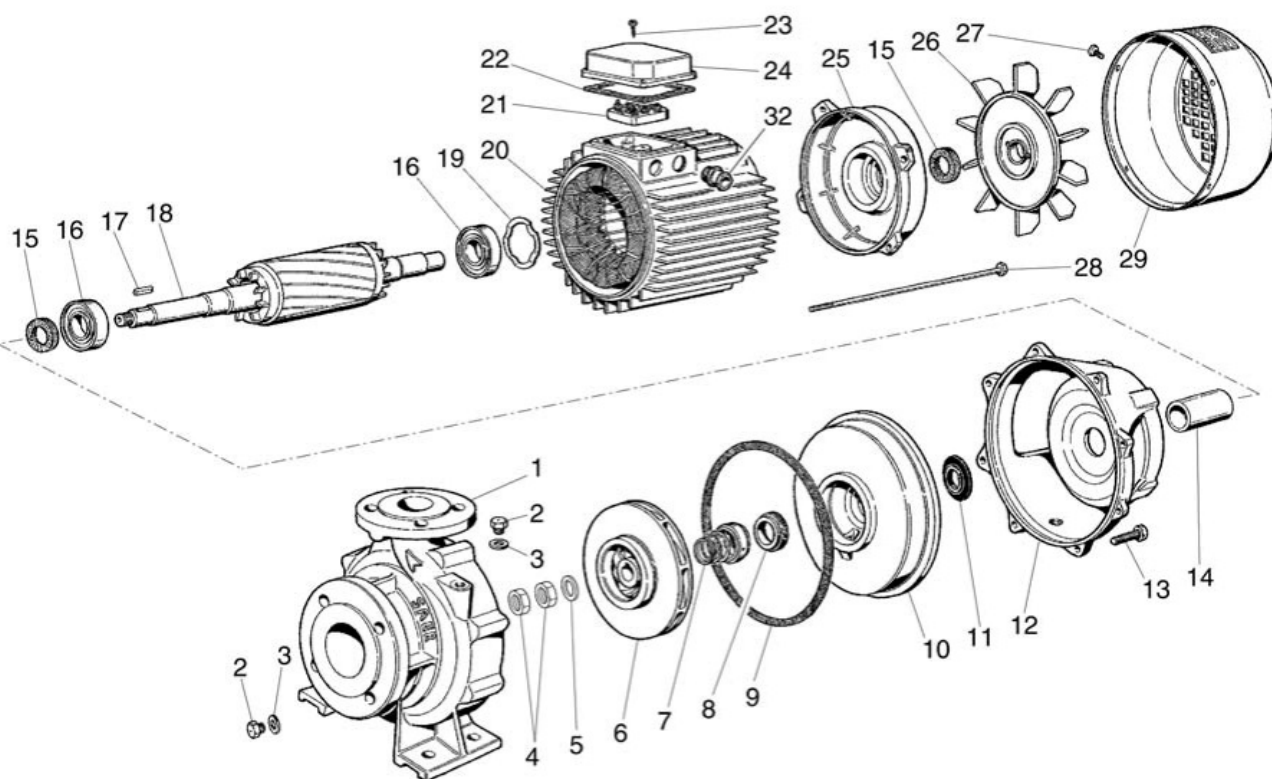
Performance data based to: Water, pure [100%]; 68°F; 62.3lb/ft³; 1.08E-5ft²/s

UNI EN ISO 9906:2012 - Grade 3B



Project	Project ID	Created by	Created on 2020/07/16	Last update
---------	------------	------------	---------------------------------	-------------

Company name
Respons. Department
Person in charge
Phone number
Fax no
E-mail address



Project

Project ID

Created by

Created on
2020/07/16

Last update