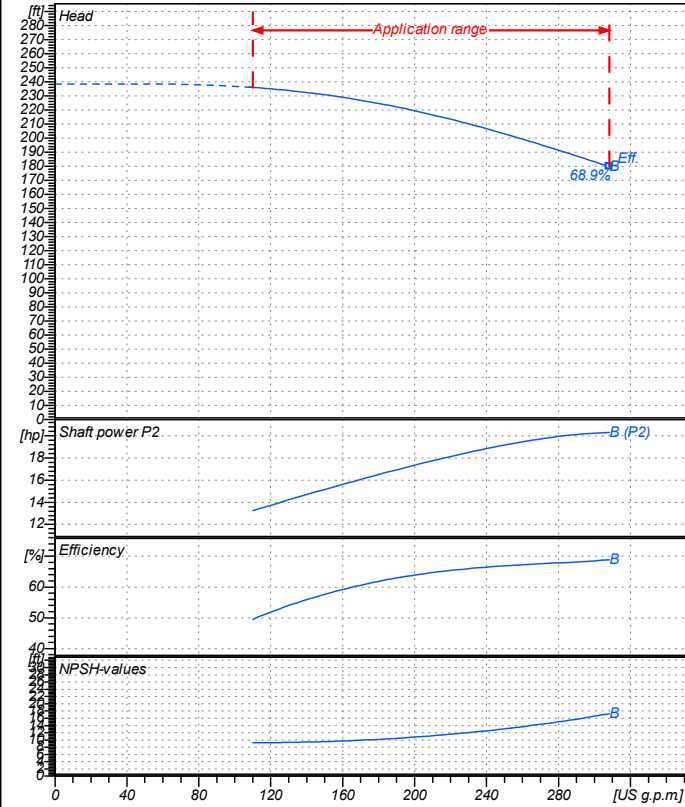


Receiver

From

Company name
Respons. Department
Person in charge
Phone number
Fax no
E-mail address



Operating data specification

Nominal flow	US g.p.m	0
Nominal head	ft	0
Static head	ft	0
NPSH - value of plant	ft	0
Inlet pressure	psi	1.42
Fluid	Water, pure	
Operating temperature t A	°F	68
Density at t A	lb/ft³	62.32
Kin. viscosity at t A	ft²/s	1.082E-5

Pump

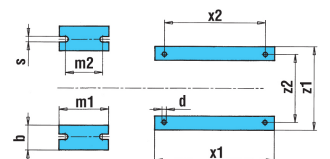
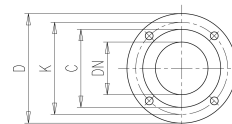
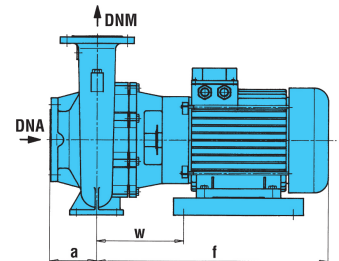
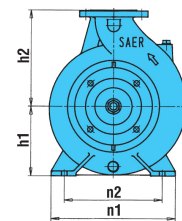
Pump name	6IR50-200B		
Size	65/50/200		
Design			
Speed rpm	3600	No of stages	1
Impeller type			
Flow	Nominal	US g.p.m	
	Max-	US g.p.m	308
	Min-	US g.p.m	110
Head	Nominal	ft	
	Max-	ft	236
	Min-	ft	180
Head H(Q=0)	ft 238		
NPSH 3%	ft		
Max. working pressure	psi 103		
Shaft power	hp		
Efficiency	%		
Max absorbed power	hp 20.307		

Materials Pump

Shaft	Stainless steel AISI 431 (1.4057)
Impeller	Cast iron EN-GJL-250
Pump body	Cast iron EN-GJL-250
Seal disc	Cast iron EN-GJL-250
Gasket	Natural fiber
Mechanical seal	BVEG (Grafite/Ossido Allumina/EPDM)

Dimensions in inch

- a 4 z1 10³/₁₆
- b 1¹⁵/₁₆ z2 8¹/₂
- d 1/2
- DNA 2⁹/₁₆
- DNM 1¹⁵/₁₆
- f 20³/₄
- h1 6³/₈
- h2 7¹⁵/₁₆
- m1 3¹⁵/₁₆
- m2 2³/₄
- n1 10⁷/₁₆
- n2 8³/₈
- s 9/16
- w 5⁷/₈
- x1 10⁷/₁₆
- x2 8³/₈



Motor	Frame size	132 M		
Manufacturer / Type	SAER	MEC132M-2P-15		
Rated power	hp	20.115	Efficiency 4/4	88 %
Electric current	A	25 A	Speed rpm	3600
Electric voltage	V	460V	3~	Hz 60
Starting mode	Unknown			
Degree of protection	IP 55	Insulation class	F	

Remarks:

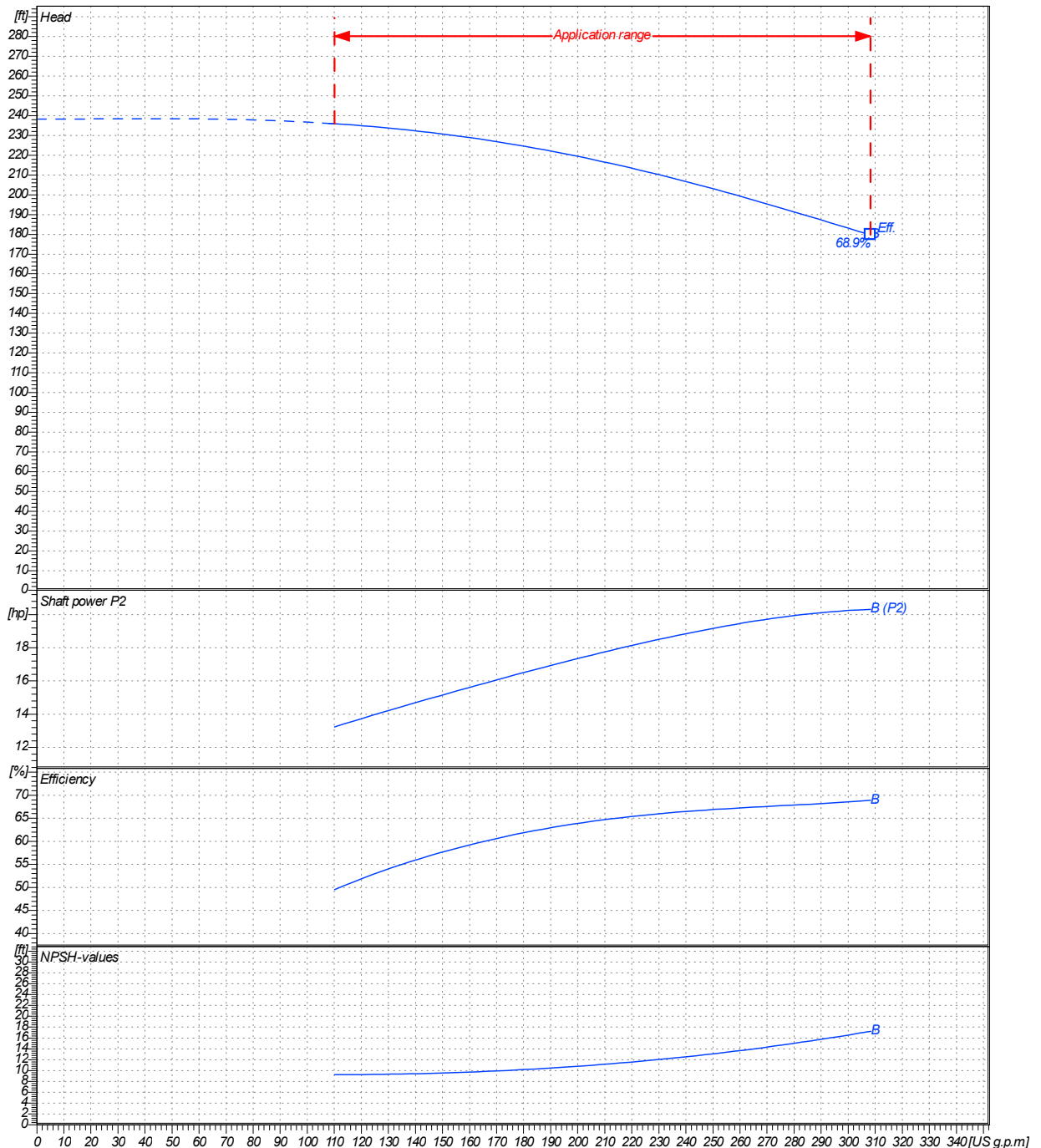
Project	Project ID	Created by	Created on	Last update
			2020/07/16	

Receiver		From	
Company name			
Respons. Department			
Person in charge			
Phone number			
Fax no			
E-mail address			

Operating area	Flow	Head	Impeller type
Operating data specification	0 US g.p.m	0 ft	Impeller construction Closed
Pump data	US g.p.m	ft	Sense of rotation Clockwise from the drive end
			Outlet width DN 50
	Flow	Head	Shaft power P2
	Min. Max. η Max.	H(Q=0) η Max.	P2(Q=0) Max. η Max.
	US g.p.m US g.p.m US g.p.m	ft ft	hp hp hp
	110 308 308	238 180	20.3 20.3
			Speed rpm 3600
			Frequency Hz 60 Hz

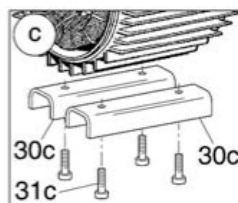
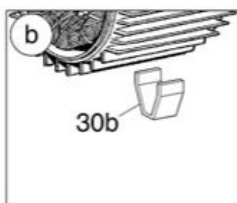
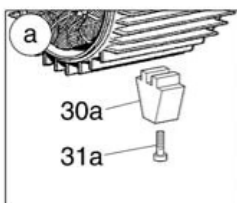
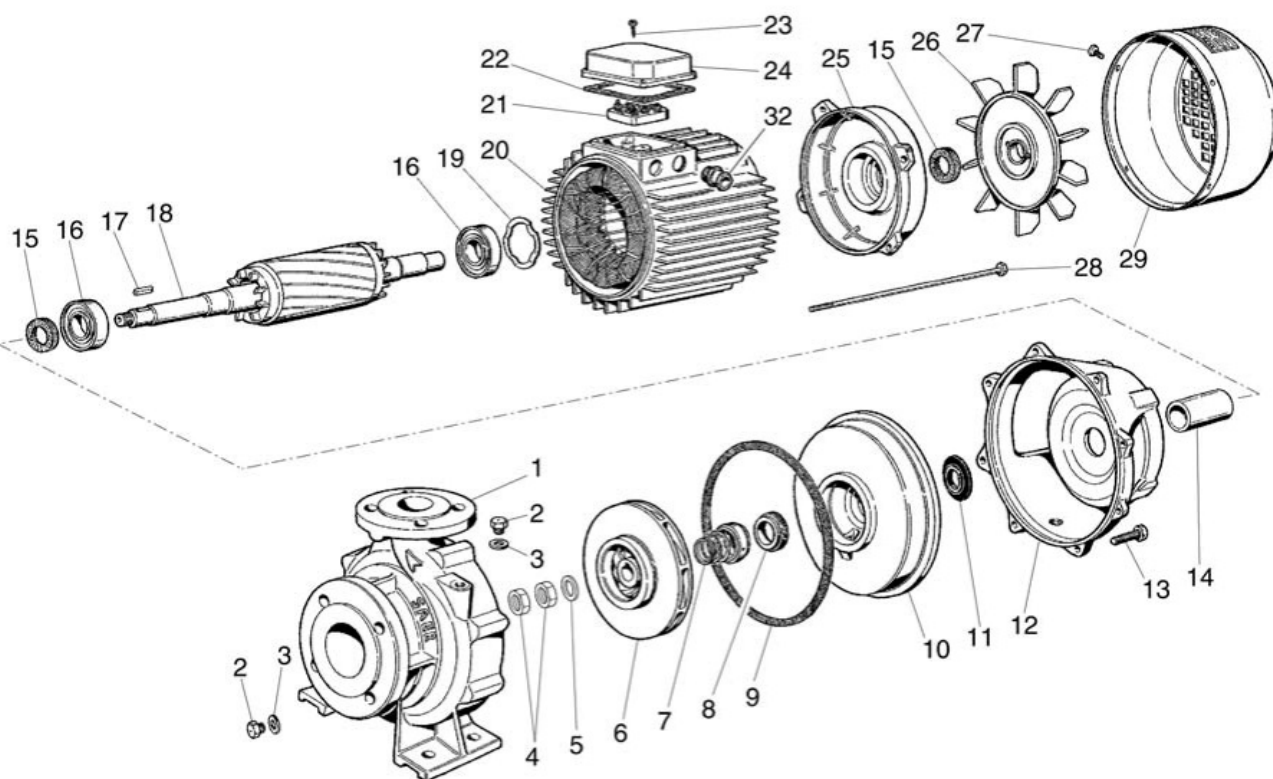
Performance data based to: Water, pure [100%]; 68°F; 62.3lb/ft³; 1.08E-5ft²/s

UNI EN ISO 9906:2012 - Grade 3B



Project	Project ID	Created by	Created on 2020/07/16	Last update
---------	------------	------------	--------------------------	-------------

Company name
Respons. Department
Person in charge
Phone number
Fax no
E-mail address



Project

Project ID

Created by

Created on
2020/07/16

Last update