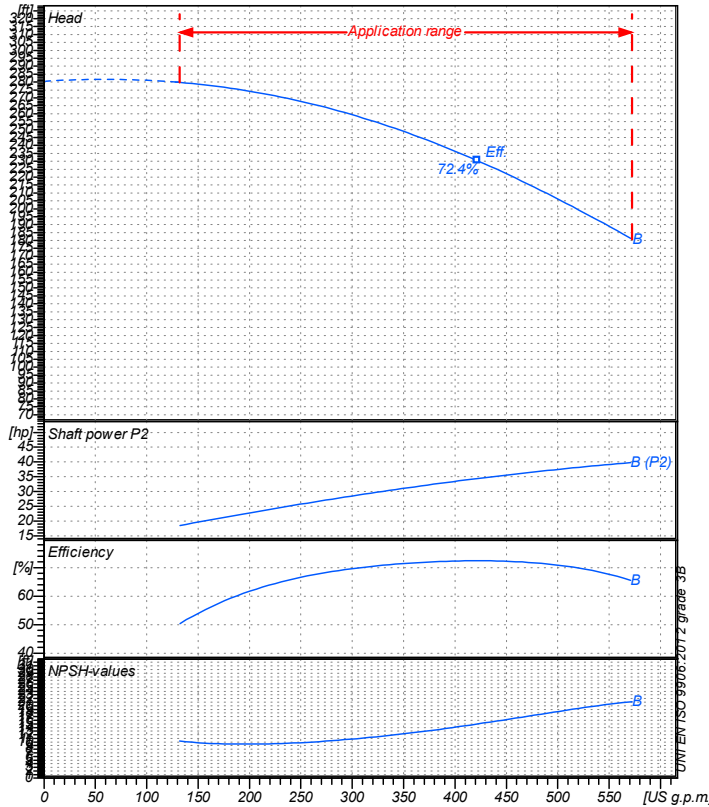


Receiver

From

 Company name
 Respons. Department
 Person in charge
 Phone number
 Fax no
 E-mail address

Operating data specification

Nominal flow	US g.p.m	0
Nominal head	ft	0
Static head	ft	0
NPSH - value of plant	ft	0
Inlet pressure	psi	1.42
Fluid	Water, pure	
Operating temperature t A	°F	68
Density at t A	lb/ft³	62.32
Kin. viscosity at t A	ft²/s	1.082E-5

Pump

Pump name	6IR50-200NB		
Size	65/50/200		
Design			
Speed rpm	3600	No of stages	1
Impeller type			
Flow	Nominal	US g.p.m	
	Max-	US g.p.m	573
	Min-	US g.p.m	132
Head	Nominal	ft	
	Max-	ft	280
	Min-	ft	181
Head H(Q=0)	ft		281
NPSH 3%	ft		
Max. working pressure	psi		121
Shaft power	hp		
Efficiency	%		
Max absorbed power	hp		39.763

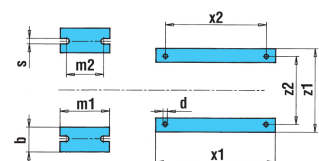
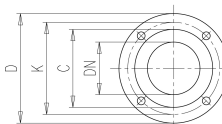
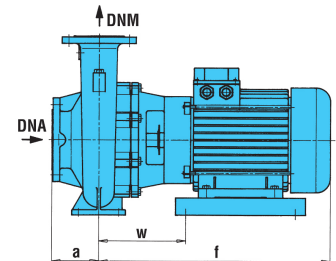
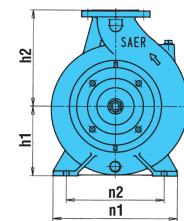
Materials Pump

Shaft	Stainless steel AISI 431 (1.4057)		
Impeller	Cast iron EN-GJL-250		
Pump body	Cast iron EN-GJL-250		
Seal disc	Cast iron EN-GJL-250		
Gasket	Natural fiber		
Mechanical seal	BVEG (Grafito/Ossido Allumina/EPDM)		

Motor	Frame size	180 L		
Manufacturer / Type	SAER	MEC180L-2P-30		
Rated power	hp	40.231	Efficiency 4/4	88 %
Electric current	A	98 A	Speed rpm	3600
Electric voltage	V	230V	3~	Hz 60
Starting mode	Unknown			
Degree of protection	IP 55	Insulation class	F	

Dimensions in inch

a	4	z1	13 ⁹ / ₁₆
b	1 ¹⁵ / ₁₆	z2	11
d	9 ⁹ / ₁₆		
DNA	2 ⁹ / ₁₆		
DNM	1 ¹⁵ / ₁₆		
f	28 ³ / ₄		
h1	6 ³ / ₈		
h2	7 ¹⁵ / ₁₆		
m1	3 ¹⁵ / ₁₆		
m2	2 ³ / ₄		
n1	10 ⁷ / ₁₆		
n2	8 ³ / ₈		
s	9 ⁹ / ₁₆		
w	10 ⁷ / ₁₆		
x1	16 ¹ / ₈		
x2	14 ⁹ / ₁₆		



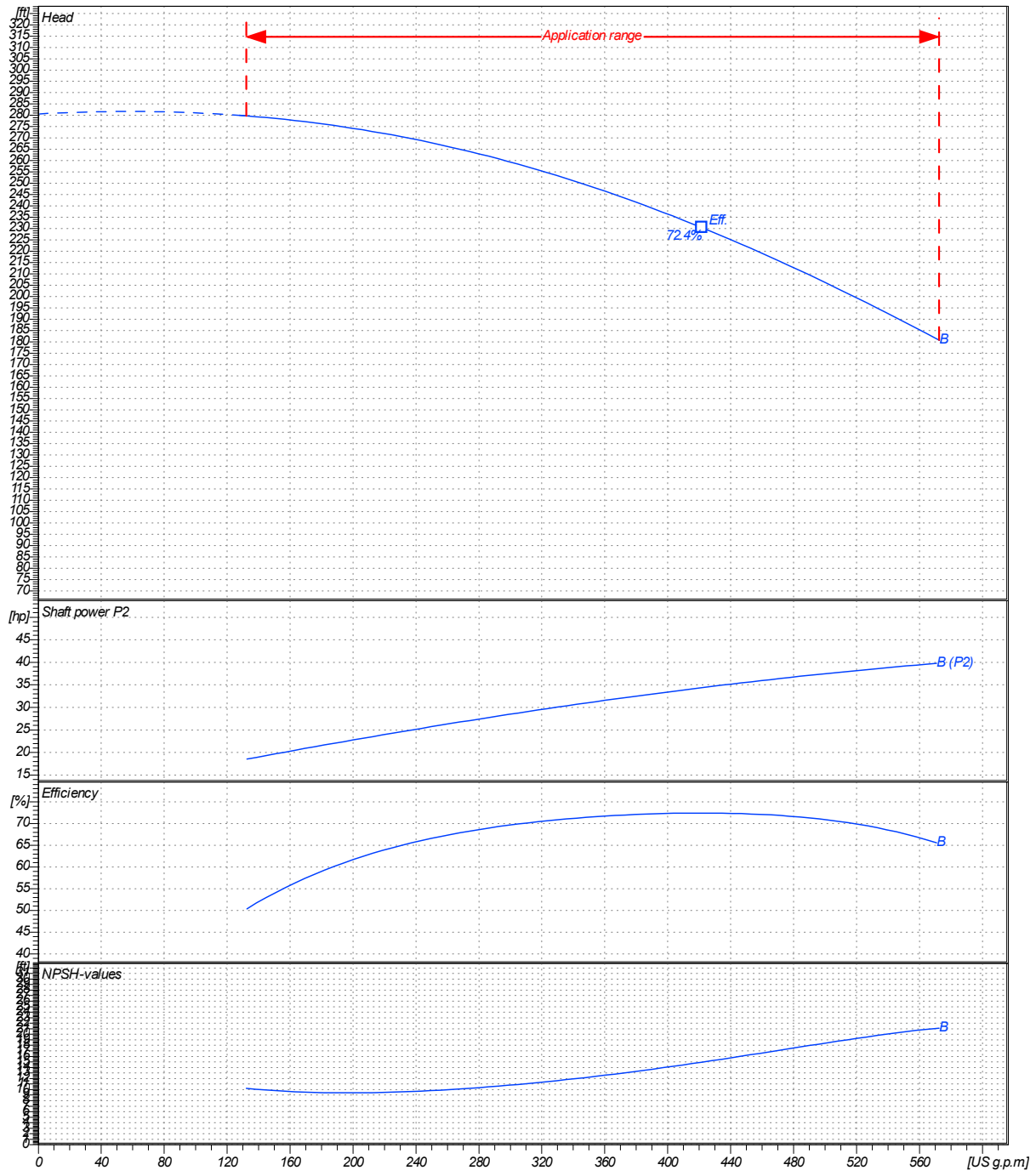
Remarks:

Project	Project ID	Created by	Created on	Last update
			2020/07/16	

Receiver	From
Company name	
Respons. Department	
Person in charge	
Phone number	
Fax no	
E-mail address	

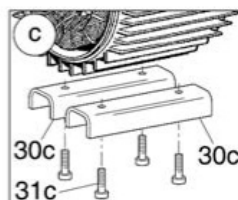
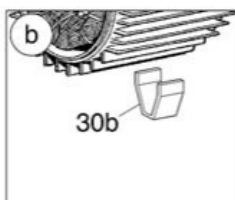
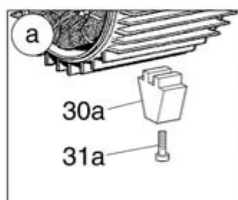
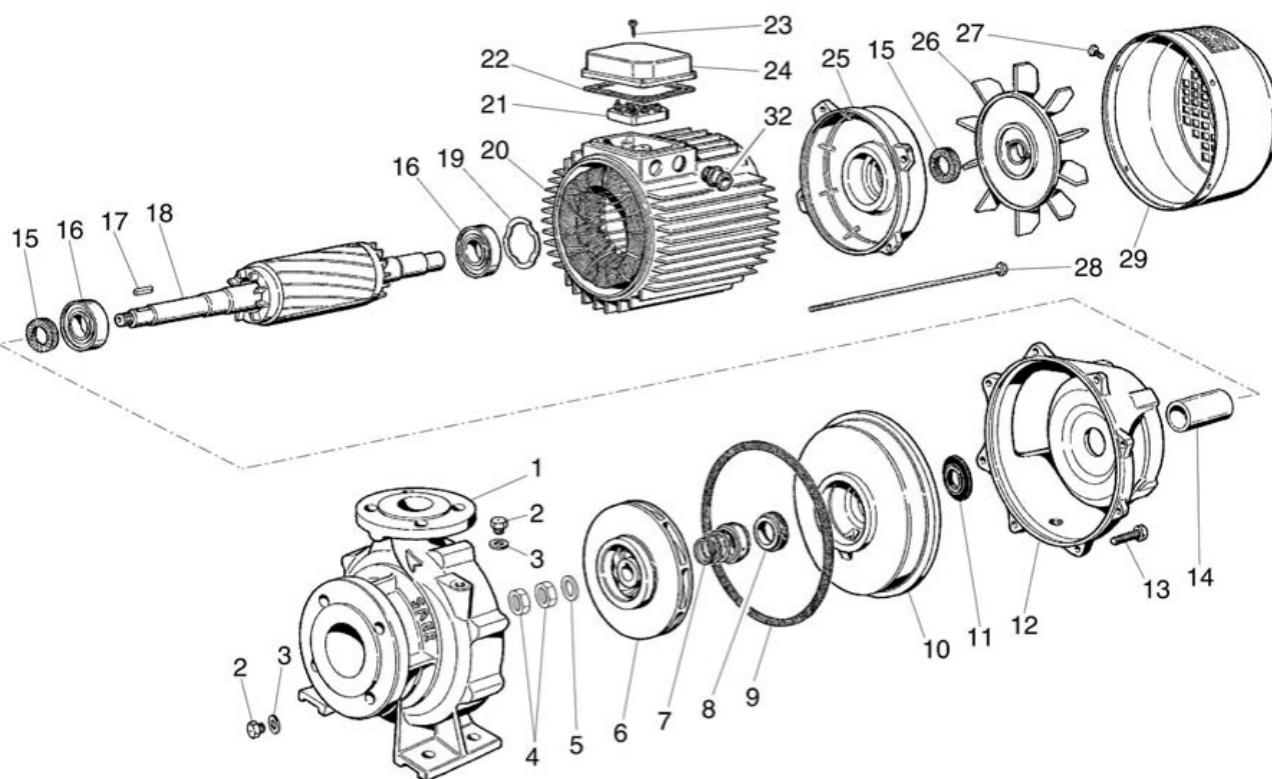
Operating area	Flow	Head	Impeller type
Operating data specification	0 US g.p.m	0 ft	Impeller construction
			Closed
			Sense of rotation
			Clockwise from the drive end
Pump data	US g.p.m	ft	Outlet width
			DN 50
	Flow	Head	Shaft power P2
	Min. Max. η Max.	H(Q=0) η Max.	P2(Q=0) Max. η Max.
	US g.p.m US g.p.m US g.p.m	ft ft	hp hp hp
	132 572 422	281 230	39.8 34.4
			Speed rpm 3600
			Frequency Hz 60 Hz

Performance data based to: Water, pure [100%]; 68°F; 62.3lb/ft³; 1.08E-5ft²/s UNI EN ISO 9906:2012 - Grade 3B



Project	Project ID	Created by	Created on	Last update
			2020/07/16	

Company name
Respons. Department
Person in charge
Phone number
Fax no
E-mail address



Project

Project ID

Created by

Created on
2020/07/16

Last update